

(19) World Intellectual Property Organization  
International Bureau



(43) International Publication Date  
10 May 2007 (10.05.2007)

PCT

(10) International Publication Number  
**WO 2007/053573 A2**

(51) International Patent Classification:  
A61K 31/4412 (2006.01) A61P 35/00 (2006.01)

(21) International Application Number:  
PCT/US2006/042367

(22) International Filing Date: 31 October 2006 (31.10.2006)

(25) Filing Language: English

(26) Publication Language: English

(30) Priority Data:  
60/731,597 31 October 2005 (31.10.2005) US

(71) Applicant (for all designated States except US): **BAYER PHARMACEUTICALS CORPORATION** [US/US];  
400 Morgan Lane, West Haven, Connecticut 06516-4175 (US).

(72) Inventor; and

(75) Inventor/Applicant (for US only): **WILHELM, Scott** [US/US]; 255 Midland Drive, Orange, Connecticut 06477 (US).

(74) Agents: **TRAVERSO, Richard, J.** et al.; Millen, White, Zelano & Branigan, P.C., 2200 Clarendon Boulevard, Suite 1400, Arlington, Virginia 22201 (US).

(81) Designated States (unless otherwise indicated, for every kind of national protection available): AE, AG, AL, AM, AT, AU, AZ, BA, BB, BG, BR, BW, BY, BZ, CA, CH, CN, CO, CR, CU, CZ, DE, DK, DM, DZ, EC, EE, EG, ES, FI, GB, GD, GE, GH, GM, GT, HN, HR, HU, ID, IL, IN, IS, JP, KE, KG, KM, KN, KP, KR, KZ, LA, LC, LK, LR, LS, LT, LU, LV, LY, MA, MD, MG, MK, MN, MW, MX, MY, MZ, NA, NG, NI, NO, NZ, OM, PG, PH, PL, PT, RO, RS, RU, SC, SD, SE, SG, SK, SL, SM, SV, SY, TJ, TM, TN, TR, TT, TZ, UA, UG, US, UZ, VC, VN, ZA, ZM, ZW.

(84) Designated States (unless otherwise indicated, for every kind of regional protection available): ARIPO (BW, GH, GM, KE, LS, MW, MZ, NA, SD, SL, SZ, TZ, UG, ZM, ZW), Eurasian (AM, AZ, BY, KG, KZ, MD, RU, TJ, TM), European (AT, BE, BG, CH, CY, CZ, DE, DK, EE, ES, FI, FR, GB, GR, HU, IE, IS, IT, LT, LU, LV, MC, NL, PL, PT, RO, SE, SI, SK, TR), OAPI (BF, BJ, CF, CG, CI, CM, GA, GN, GQ, GW, ML, MR, NE, SN, TD, TG).

**Published:**

— without international search report and to be republished upon receipt of that report

For two-letter codes and other abbreviations, refer to the "Guidance Notes on Codes and Abbreviations" appearing at the beginning of each regular issue of the PCT Gazette.



**WO 2007/053573 A2**

(54) Title: TREATMENT OF CANCER WITH SORAFENIB

(57) Abstract: The present invention provides compositions and methods for treating specific cancers with effective amounts of sorafenib.

## TREATMENT OF CANCER WITH SORAFENIB

### DESCRIPTION OF THE INVENTION

**[0001]** Cancer is a class of diseases characterized by two heritable properties: (1) uncontrolled cell division and (2) the ability of these cells to invade other tissues, either by direct growth into adjacent tissue (invasion) or by migration of cells to distant sites (metastasis). The hyper-proliferative properties initially give rise to a tumor or neoplasm. A tumor is only considered a cancer when its cells acquire the ability to invade surrounding tissues, e.g., by breaking loose and entering the blood or lymph systems, or by forming secondary tumors at other sites in the body. The unregulated growth is caused by damaged DNA, resulting in mutations to vital genes that control cell division, the cell cycle, among other functions. One or more of these mutations, which can be inherited or acquired, can lead to uncontrolled cell division and cancer.

**[0002]** Cancers can be classified according to the tissue and cell type from which they arise. Cancers developing from epithelial cells are called carcinomas, and those from connective and muscle cells are called sarcomas. Additional cancers include those arising from hematopoietic cells (e.g., leukemia) and cancers of the nervous system.

**[0003]** In general, cancers appear to arise during a process in which an initial population of abnormal cells evolve into more aberrant cells through successive cycles of mutation and selection. More than 100 different genes have been identified which, when mutant, result in cancer. These so-called cancer-critical genes fall into two broad classes: oncogenes and tumor suppressor genes. Many cancer-critical genes play a role in the regulation of cell divisions, a highly complicated process involving multiple and parallel pathways. These include growth factors, cytokines, hormones, etc.

**[0004]** Cancer can cause many different symptoms, depending on the site and character of the malignancy and whether there is metastasis. A definitive diagnosis usually requires the microscopic examination of tissue obtained by biopsy. Once diagnosed, cancer is usually treated with surgery, chemotherapy and/or radiation.

**[0005]** If untreated, most cancers eventually cause death. Cancer is one of the leading causes of death in developed countries. It is estimated by the National Cancer Institute that

approximately 9.8 million Americans were alive in January 2001 with a history of cancer. About 1,372,910 new cases of cancer were expected to be diagnosed in 2005, alone. In 2005, almost 600,000 Americans died of cancer, about 1 out of every 4 deaths. Many forms of cancer are associated with environmental factors, which may be avoidable. Smoking tobacco leads to more cancers than any other environmental factor.

**[0006]** The present invention provides methods of treating specific cancers in listed in Table 1, comprising, e.g., comprising administering to a subject in need thereof an effective amount of sorafenib, wherein the cancer is treated.

**[0007]** The phrase “effective amount” indicates the amount of sorafenib which is effective to treat any symptom or aspect of the specific cancer. Effective amounts can be determined routinely. Further guidance on dosages and administration regimens is provided below.

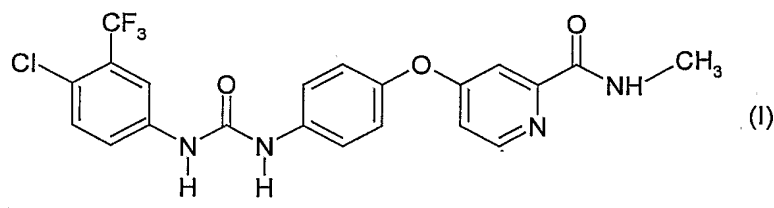
**[0008]** The term “treating” is used conventionally, e.g., the management or care of a subject for the purpose of combating, alleviating, reducing, relieving, improving, etc., one or more of the symptoms associated with a specific cancer mentioned herein in Table 1. Administering effective amounts of sorafenib can treat one or more aspects of the cancer disease, including, but not limited to, causing tumor regression; causing cell death; causing apoptosis; causing necrosis; inhibiting cell proliferation; inhibiting tumor growth; inhibiting tumor metastasis; inhibiting tumor migration; inhibiting tumor invasion; reducing disease progression; stabilizing the disease; reducing or inhibiting angiogenesis; prolonging patient survival; enhancing patient’s quality of life; reducing adverse symptoms associated with cancer; and reducing the frequency, severity, intensity, and/or duration of any of the aforementioned aspects.

**[0009]** Any of the listed cancers can be treated in accordance of the present invention, irrespective of the cause oof the cancer, and irrespective of the genetic lesions associated with it (see, e.g., Atlas of Genetics and Cytogenetics in Oncology and Haematology on the worldwide web at [infobiogen.fr/services/chromcancer/](http://infobiogen.fr/services/chromcancer/) for an atlas of genes involved in cancer). Table 1 is a list of cancers that be treated with sorafenib.

**[0010]** Cancers which can be treated include, e.g., cancers which are primary; which arise from a primary tumor at a secondary metastatic site; which have been treated by surgery (e.g., entirely removed, surgical resection, etc); which have been treated by chemotherapy, radiation, radiofrequency ablation, and/or any other adjunct to drug therapy; which have acquired drug-resistance; which are refractory to a chemotherapeutic agent.

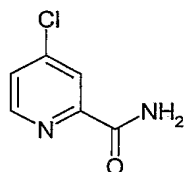
**[0011]** Any subject can be in accordance with the present invention, including, e.g., mammals, such as rats, mice, dogs, cats, horses, cows, goats, sheep, monkeys, and humans.

The term "sorafenib" as used herein refers to the tosylate salt of the compound N-[4-chloro-3-(trifluoromethyl)phenyl]-N'-{4-[2-carbamoyl-1-oxo-(4-pyridyloxy)]phenyl} urea of the formula I below including all polymorphs, hydrates, solvates or combinations thereof. Formula I is as follows:



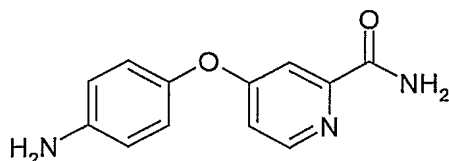
**[0012]** The compound N-[4-chloro-3-(trifluoromethyl)phenyl]-N'-{4-[2-carbamoyl-1-oxo-(4-pyridyloxy)]phenyl} urea can be prepared by the following multistep procedure:

**[0013]** Step 1: Preparation of 4-chloro-2-pyridinecarboxamide



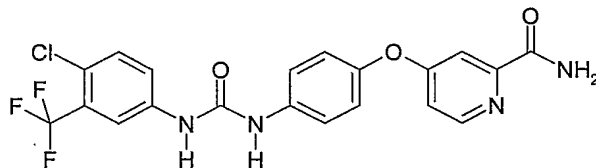
**[0014]** To a stirred mixture of methyl 4-chloro-2-pyridinecarboxylate hydrochloride (1.0 g, 4.81 mmol) dissolved in conc. aqueous ammonia (32 mL) is added ammonium chloride (96.2 mg, 1.8 mmol, 0.37 equiv.), and the heterogeneous reaction mixture is stirred at ambient temperature for 16h. The reaction mixture is poured into EtOAc (500 mL) and water (300 mL). The organic layer is washed with water (2 x 300 mL) and a saturated NaCl solution (1 x 300 mL), dried (MgSO<sub>4</sub>), concentrated in *vacuo* to give 4-chloro-2-pyridinecarboxamide as a beige solid (604.3 mg, 80.3%): TLC (50% EtOAc / hexane) R<sub>f</sub> 0.20; <sup>1</sup>H-NMR (DMSO-d<sub>6</sub>) δ 8.61 (d, J = 5.4 Hz, 1H), 8.20 (broad s, 1H), 8.02 (d, J = 1.8 Hz, 1H), 7.81 (broad s, 1H), 7.76 to 7.73 (m, 1H).

**[0015]** Step 2: Preparation of 4-(4-aminophenoxy)-2-pyridinecarboxamide



**[0016]** To 4-aminophenol (418 mg, 3.83 mmol) in anhydrous DMF (7.7 mL) is added potassium *tert*-butoxide (447 mg, 3.98 mmol, 1.04 equiv.) in one portion. The reaction mixture is stirred at room temperature for 2 h, and a solution of 4-chloro-2-pyridinecarboxamide (600 mg, 3.83 mmol, 1.0 equiv.) in anhydrous DMF (4 mL) is then added. The reaction mixture is stirred at 80 °C for 3 days and poured into a mixture of EtOAc and a saturated NaCl solution. The organic layer is sequentially washed with a saturated NH<sub>4</sub>Cl solution then a saturated NaCl solution, dried (MgSO<sub>4</sub>), and concentrated under reduced pressure. The crude product is purified using MPLC chromatography (Biotage®; gradient from 100% EtOAc to followed by 10% MeOH / 50% EtOAc / 40% hexane) to give the 4-chloro-5-trifluoromethylaniline as a brown solid (510 mg, 58%). <sup>1</sup>H-NMR (DMSO-*d*<sub>6</sub>) δ 8.43 (d, *J* = 5.7 Hz, 1H), 8.07 (br s, 1H), 7.66 (br s, 1H), 7.31 (d, *J* = 2.7 Hz, 1H), 7.07 (dd, *J* = 5.7 Hz, 2.7 Hz, 1H), 6.85 (d, *J* = 9.0 Hz, 2 H), 6.62 (d, *J* = 8.7 Hz, 2H), 5.17 (broad s, 2H); HPLC EI-MS *m/z* 230 ((M+H)<sup>+</sup>).

**[0017]** Step 3: Preparation of N-[4-chloro-3-(trifluoromethyl)phenyl]-N'-{4-[2-carbamoyl-(4-pyridyloxy)]phenyl} urea



**[0018]** A mixture of 4-chloro-5-trifluoromethylaniline (451 mg, 2.31 mmol, 1.1 equiv.) and 1,1'-carbonyl diimidazole (419 mg, 2.54 mmol, 1.2 equiv.) in anhydrous dichloroethane (5.5 mL) is stirred under argon at 65 °C for 16 h. Once cooled to room temperature, a solution of 4-(4-aminophenoxy)-2-pyridinecarboxamide (480 mg, 2.09 mmol) in anhydrous THF (4.0 mL) is added, and the reaction mixture is stirred at 60 °C for 4 h. The reaction mixture is poured into EtOAc, and the organic layer is washed with water (2x) and a saturated NaCl solution (1x), dried (MgSO<sub>4</sub>), filtered, and evaporated in *vacuo*. Purification using MPLC chromatography (Biotage®; gradient from 100% EtOAc to 2% MeOH / EtOAc) gave N-[4-chloro-3-(trifluoromethyl)phenyl]-N'-{4-[2-carbamoyl-(4-pyridyloxy)]phenyl} urea as a white solid (770 mg, 82%); TLC (EtOAc) R<sub>f</sub>

0.11, 100% ethyl acetate  $^1\text{H-NMR}$  ( $\text{DMSO-d}_6$ )  $\delta$  9.21 (s, 1H), 8.99 (s, 1H), 8.50 (d,  $J = 5.6$  Hz, 1H), 8.11 (s, 1H), 8.10 (s, 1H), 7.69 (broad s, 1H), 7.64 (dd,  $J = 8.2$  Hz, 2.1 Hz, 1H), 7.61 (s, 1H), 7.59 (d,  $J = 8.8$  Hz, 2H), 7.39 (d,  $J = 2.5$  Hz, 1H), 7.15 (d,  $J = 8.9$  Hz, 2H), 7.14 (m, 1H); MS LC-MS ( $\text{MH}^+ = 451$ ). Anal. calcd for  $\text{C}_{20}\text{H}_{14}\text{ClF}_3\text{N}_4\text{O}_3$ : C 53.29% H 3.13% N 12.43%. Found: C 53.33% H 3.21% N 12.60%.

**[0019]** Other methods of preparing N-[4-chloro-3-(trifluoromethyl)phenyl]-N'-{4-[2-carbamoyl-(4-pyridyloxy)]phenyl} urea are described in Bankston et al. "A Scaleable Synthesis of BAY 43-9006: A Potent Raf Kinase Inhibitor for the Treatment of Cancer" *Org. Proc. Res. Dev.* 2002, 6(6), 777-781, and WO 00/42012 and WO 00/41698.

**[0020]** An example of the preparation of sorafenib in the polymorph II is as follows:

**[0021]** 903 g of 4-{4-[(4-chloro-3-(trifluoromethyl)phenyl)amino]carbonylamino]phenoxy}-N-methylpyridine-2-carboxamide, prepared as described above, are initially charged in 2700 ml of ethanol. 451.7 g of p-toluenesulfonic acid monohydrate are dissolved in 1340 g of ethanol and added dropwise at room temperature. The suspension is stirred at room temperature for 1 hour, then filtered off with suction, and the residue is washed three times with 830 ml each time of ethanol. The drying is effected at  $50^\circ\text{C}$  under reduced pressure with supply of air. 1129.6 g of the title compound in the polymorph II are obtained.

**[0022]** An example of the preparation of sorafenib in the polymorph I is as follows:

**[0023]** Heating 5mg of "Sorafenib," [tosylate salt of 4-{4-[(4-chloro-3-(trifluoromethyl)phenyl)amino]carbonylamino]-phenoxy}-N-methylpyridine-2-carboxamide] in the polymorph II to  $200^\circ\text{C}$  at a heating rate of  $20^\circ\text{C}/\text{min}$  and subsequently cooling to room temperature at a cooling rate of  $2^\circ\text{C}/\text{min}$ . The sample is tested thermoanalytically (DSC) and corresponds to the title compound in the polymorph I.

**[0024]** The specific dose level and frequency of dosage may vary, depending upon a variety of factors, including the activity of the active agent, its metabolic stability and length of action, rate of excretion, mode and time of administration, the age, body weight, health condition, gender, diet, baseline hematologic and biologic parameters (e.g., WBCs, granulocytes, platelets, hemoglobin, creatinine, bilirubin, albumin, etc.), etc., of the subject, and the severity, intensity,

stage of the cancer, primary site of cancer, size of cancer lesion, presence or extent of metastases, surgical status, disease progression (i.e., aggressive), etc. of the disease.

**[0025]** The compound of the present invention can be administered in any form by any effective route, including, e.g., oral, parenteral, enteral, intraperitoneal, topical, transdermal (e.g., using any standard patch), ophthalmic, nasally, local, non-oral, such as aerosol, spray, inhalation, subcutaneous, intravenous, intramuscular, buccal, sublingual, rectal, vaginal, intra-arterial, intrathecal, intratumoral, etc. Sorafenib can be administered directly to the site of a tumor, either pre- or post-operatively. It can be administered alone, or in combination with any ingredient(s), active or inactive.

**[0026]** Sorafenib can be administered by the oral route using the pharmaceutical composition of the present invention will generally range, based on body weight, from about 0.01 mg/kg to about 50 mg/kg; from about 1 mg/kg to about 40 mg/kg; from about 5 mg/kg to about 30 mg/kg; from about 10 to about 25 mg/kg; about 10 mg/kg; about 20 mg/kg; about 25 mg/kg; about 30 mg/kg; etc.

**[0027]** Any suitable dosing interval can be used in accordance with the present invention. For example, the compound can be administered once, twice (BID), three, four, etc., times a day. For example, about 100, about 200, about 400 mg, about 500 mg, about 600 mg, or about 800 mg can be administered one, twice, or three times daily.

**[0028]** Sorafenib can be administered at any suitable time. For example, it can be administered routinely as other chemotherapeutic agents; it can be administered as a bolus prior to a surgical intervention; prior to or after radiation, radiofrequency ablation and other energy treatments; post-operatively; pre-operatively; etc.

**[0029]** Sorafenib can be further combined with any other suitable additive or pharmaceutically acceptable carrier. Such additives include any of those used conventionally, such as those described in Remington: The Science and Practice of Pharmacy (Gennaro and Gennaro, eds, 20th edition, Lippincott Williams & Wilkins, 2000); Theory and Practice of Industrial Pharmacy (Lachman et al., eds., 3rd edition, Lippincott Williams & Wilkins, 1986); Encyclopedia of Pharmaceutical Technology (Swarbrick and Boylan, eds., 2nd edition, Marcel Dekker, 2002).

**[0030]** The compounds can be in any suitable form, without limitation. Forms suitable for oral use, include, but are not limited to, tablets, troches, lozenges, aqueous or oily suspensions,

dispersible powders or granules, emulsions, hard or soft capsules, solutions, syrups and elixirs. Compositions intended for oral use may be prepared according to any method known to the art for the manufacture of pharmaceutical compositions.

**[0031]** Compounds can be formulated with other ingredients, e.g., “pharmaceutically acceptable carriers” or “excipients” to indicate they are combined with the active drug and can be administered safely to a subject for therapeutic purposes. These include, but are not limited to, antioxidants, preservatives, dyes, tablet-coating compositions, plasticizers, inert carriers, excipients, polymers, coating materials, osmotic barriers, devices and agents which slow or retard solubility, etc.

**[0032]** Compositions intended for oral use may be prepared according to any suitable method known to the art for the manufacture of pharmaceutical compositions. Such compositions may contain one or more agents selected from the group consisting of diluents, sweetening agents, flavoring agents, coloring agents and preserving agents in order to provide palatable preparations.

**[0033]** Non-toxic pharmaceutically acceptable excipients that are suitable for the manufacture of tablets. These excipients may be, for example, inert diluents, such as calcium carbonate, sodium carbonate, lactose, calcium phosphate or sodium phosphate; granulating and disintegrating agents, for example, corn starch, or alginic acid; and binding agents, for example magnesium stearate, stearic acid or talc.

**[0034]** Formulations for oral use may also be presented as hard gelatin capsules wherein the active ingredient is mixed with an inert solid diluent, for example, calcium carbonate, calcium phosphate or kaolin, or as soft gelatin capsules wherein the active ingredient is mixed with water or an oil medium, for example peanut oil, liquid paraffin or olive oil.

**[0035]** Aqueous suspensions containing the active materials in admixture with excipients suitable for the manufacture of aqueous suspensions may also be used. Such excipients are suspending agents, for example sodium carboxymethylcellulose, methylcellulose, hydroxypropyl-methylcellulose, sodium alginate, polyvinylpyrrolidone, gum tragacanth and gum acacia; dispersing or wetting agents may be a naturally-occurring phosphatide, for example, lecithin, or condensation products of an alkylene oxide with fatty acids, for example polyoxyethylene stearate, or condensation products of ethylene oxide with long chain aliphatic alcohols, for example heptadecaethylene oxycetanol, or condensation products of ethylene oxide



with partial esters derived from fatty acids and hexitol such as polyoxyethylene sorbitol monooleate, or condensation products of ethylene oxide with partial esters derived from fatty acids and hexitol anhydrides, for example polyethylene sorbitan monooleate. The aqueous suspensions may also contain one or more preservatives, for example ethyl, or n-propyl p-hydroxybenzoate, one or more coloring agents, one or more flavoring agents, and one or more sweetening agents, such as sucrose or saccharin.

**[0036]** Dispersible powders and granules suitable for preparation of an aqueous suspension by the addition of water provide the active ingredient in admixture with a dispersing or wetting agent, suspending agent and one or more preservatives. Suitable dispersing or wetting agents and suspending agents are exemplified by those already mentioned above. Additional excipients, for example, sweetening, flavoring and coloring agents, may also be present.

**[0037]** The compounds may also be in the form of non-aqueous liquid formulations, e.g., oily suspensions which may be formulated by suspending the active ingredients in a vegetable oil, for example arachis oil, olive oil, sesame oil or peanut oil, or in a mineral oil such as liquid paraffin. The oily suspensions may contain a thickening agent, for example beeswax, hard paraffin or cetyl alcohol. Sweetening agents such as those set forth above, and flavoring agents may be added to provide palatable oral preparations. These compositions may be preserved by the addition of an anti-oxidant such as ascorbic acid.

**[0038]** Pharmaceutical compositions of the invention may also be in the form of oil-in-water emulsions. The oily phase may be a vegetable oil, for example olive oil or arachis oil, or a mineral oil, for example liquid paraffin or mixtures of these. Suitable emulsifying agents may be naturally-occurring gums, for example gum acacia or gum tragacanth, naturally-occurring phosphatides, for example soy bean, lecithin, and esters or partial esters derived from fatty acids and hexitol anhydrides, for example sorbitan monooleate, and condensation products of the said partial esters with ethylene oxide, for example polyoxyethylene sorbitan monooleate. The emulsions may also contain sweetening and flavoring agents.

**[0039]** Syrups and elixirs may be formulated with sweetening agents, for example glycerol, propylene glycol, sorbitol or sucrose. Such formulations may also contain a demulcent, a preservative and flavoring and coloring agents.

**[0040]** The compounds may also be administered in the form of suppositories for rectal or vaginal administration of the drug. These compositions can be prepared by mixing the drug with

a suitable non-irritating excipient which is solid at ordinary temperatures but liquid at the rectal temperature or vaginal temperature and will therefore melt in the rectum or vagina to release the drug. Such materials include cocoa butter and polyethylene glycols.

**[0041]** Compounds of the invention may also be administrated transdermally using methods known to those skilled in the art (see, for example: Chien; "Transdermal Controlled Systemic Medications"; Marcel Dekker, Inc.; 1987. Lipp et al. WO94/04157 3Mar94). For example, a solution or suspension of a compound of Formula I in a suitable volatile solvent optionally containing penetration enhancing agents can be combined with additional additives known to those skilled in the art, such as matrix materials and bacteriocides. After sterilization, the resulting mixture can be formulated following known procedures into dosage forms. In addition, on treatment with emulsifying agents and water, a solution or suspension of a compound of Formula I may be formulated into a lotion or salve.

**[0042]** Suitable solvents for processing transdermal delivery systems are known to those skilled in the art, and include lower alcohols such as ethanol or isopropyl alcohol, lower ketones such as acetone, lower carboxylic acid esters such as ethyl acetate, polar ethers such as tetrahydrofuran, lower hydrocarbons such as hexane, cyclohexane or benzene, or halogenated hydrocarbons such as dichloromethane, chloroform, trichlorotrifluoroethane, or trichlorofluoroethane. Suitable solvents may also include mixtures of one or more materials selected from lower alcohols, lower ketones, lower carboxylic acid esters, polar ethers, lower hydrocarbons, halogenated hydrocarbons.

**[0043]** Suitable penetration enhancing materials for transdermal delivery system are known to those skilled in the art, and include, for example, monohydroxy or polyhydroxy alcohols such as ethanol, propylene glycol or benzyl alcohol, saturated or unsaturated C8–C18 fatty alcohols such as lauryl alcohol or cetyl alcohol, saturated or unsaturated C8–C18 fatty acids such as stearic acid, saturated or unsaturated fatty esters with up to 24 carbons such as methyl, ethyl, propyl, isopropyl, n-butyl, sec-butyl, isobutyl, tertbutyl or monoglycerin esters of acetic acid, capronic acid, lauric acid, myristinic acid, stearic acid, or palmitic acid, or diesters of saturated or unsaturated dicarboxylic acids with a total of up to 24 carbons such as diisopropyl adipate, diisobutyl adipate, diisopropyl sebacate, diisopropyl maleate, or diisopropyl fumarate. Additional penetration enhancing materials include phosphatidyl derivatives such as lecithin or cephalin, terpenes, amides, ketones, ureas and their derivatives, and ethers such as dimethyl

isosorbid and diethyleneglycol monoethyl ether. Suitable penetration enhancing formulations may also include mixtures of one or more materials selected from monohydroxy or polyhydroxy alcohols, saturated or unsaturated C8–C18 fatty alcohols, saturated or unsaturated C8–C18 fatty acids, saturated or unsaturated fatty esters with up to 24 carbons, diesters of saturated or unsaturated dicarboxylic acids with a total of up to 24 carbons, phosphatidyl derivatives, terpenes, amides, ketones, ureas and their derivatives, and ethers.

**[0044]** Suitable binding materials for transdermal delivery systems are known to those skilled in the art and include polyacrylates, silicones, polyurethanes, block polymers, styrenebutadiene copolymers, and natural and synthetic rubbers. Cellulose ethers, derivatized polyethylenes, and silicates may also be used as matrix components. Additional additives, such as viscous resins or oils may be added to increase the viscosity of the matrix.

**[0045]** Compositions comprising precursors can also be formulated for controlled release, where release of the active ingredient is regulated or modulated to achieve a desired rate of delivery into the systemic circulation. A controlled release formulation can be pulsed, delayed, extended, slow, steady, immediate, rapid, fast, etc. It can comprise one or more release formulations, e.g. extended- and immediate- release components. Extended delivery systems can be utilized to achieve a dosing interval of once every 24 hours, once every 12 hours, once every 8 hours, once every 6 hours, etc. The dosage form/delivery system can be a tablet or a capsule suited for extended release, but a sustained release liquid or suspension can also be used. A controlled release pharmaceutical formulation can be produced which maintains the release of, and or peak blood plasma levels of sorafenib.

**[0046]** Without further elaboration, it is believed that one skilled in the art can, using the preceding description, utilize the present invention to its fullest extent. The preceding preferred specific embodiments are, therefore, to be construed as merely illustrative, and not limitative of the remainder of the disclosure in any way whatsoever.

**[0047]** From the foregoing description, one skilled in the art can easily ascertain the essential characteristics of this invention and, without departing from the spirit and scope thereof, can make various changes and modifications of the invention to adapt it to various usages and conditions.

Table 1**-A-****Adenocarcinoma****Adenocarcinoma Lung Cancer****Adenocystic Carcinoma****Adenoid Cystic Breast Cancer****Adenoid Cystic Carcinoma****Adrenal Gland Cancer:**

Adrenal Gland Cancer - Cortical Adenoma

Adrenal Gland Cancer - Cortical Carcinoma

**AIDS related disorders:**

AIDS-related disorders - Kaposi's sarcoma

AIDS-related disorders, - lymphoma

**Advanced Breast Cancer****Aggressive Breast Cancer****Ameloblastoma****Anal (Anus) Cancer, including:**

Anal Cancer - Early-Stage (Superficial)

Anal Cancer - Intermediate-Stage I

Anal Cancer - Intermediate-Stage II

Anal Cancer - Intermediate-Stage III

Anal Cancer - Metastatic, Advanced-Stage IV

Anal Cancer - Adenocarcinomas

Anal Cancer - Intraepithelial Neoplasia

Anal Cancer - Bowen's Disease

Anal Cancer - Paget's Disease

Anal Cancer - Small Cell Cancers

Anal Cancer - Squamous Cell Carcinoma

**Angiosarcoma****Appendix Cancer (Appendiceal Cancer)****Ascites, Malignant****Astrocytoma**

-B-

**Barrett's Esophagus**  
**Bartholin Gland Cancer**  
**Basal Cell Carcinoma**  
**Basal Cell Skin Cancer**  
**B-Cell Lymphoma**  
**Bilateral Breast Cancer**  
**Bile Duct Cancer**

**Bladder Cancer:**

Bladder Cancer - Superficial  
Bladder Cancer - Muscle-Invasive  
Bladder Cancer - Small Cell  
Bladder Cancer - Metastases

**Bone Cancer:**

Bone Cancer - Chordoma  
Bone Cancer - Chondrosarcoma  
Bone Cancer - Ewing's Sarcoma (Child)  
Bone Cancer - Giant Cell  
Bone Cancer - Mesenchymal Chondrosarcoma  
Bone Cancer - Osteosarcoma  
Bone Cancer - Bone Marrow Transplantation  
Bone Cancer - Bone Metastases

**Bowen's Disease****Borderline Ovarian Cancer****Brain Tumors:**

Brain Tumors - Adult  
Brain Tumors - Child  
Brain Tumors - Astrocytoma  
Brain Tumors - Brainstem  
Brain Tumors - Cavernous Sinus  
Brain Tumors - Chondroma  
Brain Tumors - Ependymoma  
Brain Tumors - Glioblastoma  
Brain Tumors - Glioma  
Brain Tumors - Gliomatosis  
Brain Tumors - Hemangiopericytoma  
Brain Tumors - Medulloblastoma  
Brain Tumors - Oligodendroglioma  
Brain Tumors - Pineoblastoma / Pinealoma  
Brain Tumors - Primary Central Nervous System Lymphoma  
Brain Tumors - Thalamic  
Brain Tumors - Brainstem Glioma

**Breast Cancers Including:**

- Breast Cancer - Adenoid Cystic
- Breast Cancer - Advanced
- Breast Cancer - Aggressive
- Breast Cancer - Apocrine Carcinoma
- Breast Cancer - Bilateral (in both breasts)
- Breast Cancer - Comedo Type
- Breast Cancer - Ductal Carcinoma In Situ
- Breast Cancer - Ductal Carcinoma Invasive
- Breast Cancer - Early Stage
- Breast Cancer - Estrogen-Negative
- Breast Cancer - High-Risk
- Breast Cancer - Inflammatory
- Breast Cancer - in Pregnancy
- Breast Cancer - Lobular, Invasive
- Breast Cancer - Lobular Carcinoma In situ (LCIS)
- Breast Cancer - Lymphoma
- Breast Cancer - Medullary
- Breast Cancer - Microinvasive
- Breast Cancer - Mucinous
- Breast Cancer - Node-Negative
- Breast Cancer - Node-Positive
- Breast Cancer, Nonepithelial Neoplasms:
  - Breast Cancer - Nonepithelial Neoplasms - Phyllodes Sarcomas
  - Breast Cancer - Nonepithelial Neoplasms - Phyllodes Tumors
- Breast Cancer - Occult with Lymphatic Metastasis
- Breast Cancer - Papillary
- Breast Cancer - Postmenopausal
- Breast Cancer - Premenopausal
- Breast Cancer - Recurrent
- Breast Cancer - Sarcoma
- Breast Cancer - Secretory (juvenile) Carcinoma
- Breast Cancer - Squamous
- Breast Cancer - Stage I
- Breast Cancer - Stage II
- Breast Cancer - Stage III
- Breast Cancer - Stage IV
- Breast Cancer - Tubular
- Breast Cancer - Ulcerating
- Breast Cancer with Bladder Metastases
- Breast Cancer with Bone Metastases
- Breast Cancer with Bone and Lung Metastases
- Breast Cancer with Brain Metastases

Breast Cancer with Brain and Liver Metastases  
Breast Cancer with Central Nervous System Metastases  
Breast Cancer with Liver Metastases  
Breast Cancer with Lung Metastases  
Breast Cancer with Lymphangitic Metastasis  
Breast Cancer with Lymphatic Metastases  
Breast Cancer with Lymph Node Metastases  
Breast Cancer with Meningeal Metastases  
Breast Cancer with Pericardial Effusion  
Breast Cancer with Pleura Metastases  
Breast Cancer with Pleural Effusion  
Breast Cancer with Skin Metastases  
Breast Cancer with Spine Metastases  
Breast Cancer with Stomach Metastases  
Breast Cancer - Breast Reconstruction  
Breast Cancer - Comedo Type Breast Cancer  
Breast Cancer - Early Stage Breast Cancer  
Breast Cancer - Estrogen-Negative Breast Cancer  
Breast Cancer - Inflammatory Breast Cancer  
Breast Cancer - Invasive Breast Cancer  
Breast Cancer - Lobular Breast Cancer  
Breast Cancer - Medullary Breast Cancer  
Breast Cancer - Metachronous Bilateral  
Breast Cancer - Microinvasive Breast Cancer  
Breast Cancer - Mucinous Breast Cancer  
Breast Cancer - Node-Negative Breast Cancer  
Breast Cancer - Node-Positive Breast Cancer  
Breast Cancer - Occult Breast Cancer with Lymphatic Metastasis  
Breast Cancer - Paget's Disease of the Nipple  
Breast Cancer - Papillary Breast Cancer  
Breast Cancer - Recurrent Breast Cancer  
Breast Cancer - Sarcoma of the Breast  
Breast Cancer - Squamous Cell Breast Cancer  
Breast Cancer - Synchronous Bilateral Breast Cancer  
Breast Cancer - Tubular Breast Cancer  
Breast Cancer - Ulcerating Breast Cancer

**Bronchial Cancer**

**Bronchioalveolar Lung Cancer**

**Buttock Cancer**

-C-

**Cancer of Unknown Primary Site (CUPS)****Carcinoma of Unknown Primary****Carcinoid of the Appendix****Carcinoid of the Colon****Carcinoid of the Pancreas****Carcinoid of the Rectum****Carcinoid of the Stomach****Carcinoid Syndrome****Carcinoid Tumor****Carcinosarcoma of the Ovary****Carcinosarcoma of the Uterus****Carney's Triad****Cavernous Sinus Cancer****Cecum Cancer****Central Nervous System Lymphoma****Central Nervous System Cancers:**

Central Nervous System Cancers - Medulloblastoma

Central Nervous System Cancers - Astrocytomas

Central Nervous System Cancers - Gliomas - Optic, Chiasmatal, and Hypothalamic

Central Nervous System Cancers - Cystic Cerebellar Astrocytomas

Central Nervous System Cancers - Diffuse, Fibrillary Astrocytomas - e.g., World Health Organization (WHO) Grade II

Central Nervous System Cancers - Astrocytoma, e.g., WHO grade III Anaplastic Astrocytoma, and WHO grade IV

Central Nervous System Cancers - Glioblastoma (GBM)

Central Nervous System Cancers - Pilocytic Astrocytoma

Central Nervous System Cancers - Pleomorphic Xanthoastrocytoma

Central Nervous System Cancers - Subependymal Giant Cell Astrocytomas

Central Nervous System Cancers - Oligodendroglioma- Anaplastic, differentiated

Central Nervous System Cancers - Oligoastrocytoma- Anaplastic, differentiated

Central Nervous System Cancers - Ependymoma- Ellular, Papillary, Clear Cell, Tanycytic, Myxopapillary

Central Nervous System Cancers - Choroid Plexus Tumor

Central Nervous System Cancers - Meningioma- Atypical and Malignant, Parasagittal, Falx, Olfactory Groove, Tuberculum Sellae, Sphenoid Ridge, Cerebellopontine Angle

Central Nervous System Cancers - Schwannoma

Central Nervous System Cancers - Neurofibromas

Central Nervous System Cancers - Hemangioblastomas

Central Nervous System Cancers - Atypical Teratoid/Rhabdoid Tumors

Central Nervous System Cancers - Gorlin's, Turcot, and Li-Fraumeni syndromes

Central Nervous System Cancers - Supratentorial Parenchymal tumors

Central Nervous System Cancers - Medulloepithelioma

Central Nervous System Cancers - Neuroblastoma

Central Nervous System Cancers - Ependymoblastoma



- Central Nervous System Cancers - Pineoblastoma
- Central Nervous System Cancers - Pineal Parenchymal Tumors
- Central Nervous System Cancers - Germinomas
- Central Nervous System Cancers - Pituitary Adenoma
- Central Nervous System Cancers - Craniopharyngioma
- Central Nervous System Cancers - Acoustic Neuromas (Vestibular Schwannomas)
- Central Nervous System Cancers - Glomus Jugulare tumors (Paragangliomas)
- Central Nervous System Cancers - Chordoma and Chondrosarcoma
- Central Nervous System Cancers - Hemangioblastomas
- Central Nervous System Cancers - Choroid Plexus Papilloma and Carcinoma
- Central Nervous System Cancers - Spinal Axis Tumors

**Centrocytic Lymphoma**  
**Cerebral Astrocytoma**

**Cervix Cancer (Cervical Cancer):**

**Cervix Cancer (Cervical Cancer), Adenocarcinoma In Situ:**

- Cervical Cancer, Adenocarcinoma In Situ - Adenoid Basal Carcinoma
- Cervical Cancer, Adenocarcinoma In Situ - Adenoma Malignum
- Cervical Cancer, Adenocarcinoma In Situ - Adenosquamous Carcinoma
- Cervical Cancer, Adenocarcinoma In Situ - Glassy Cell Carcinoma
- Cervical Cancer, Adenocarcinoma In Situ - Papillary Serous Carcinoma

**Cervix Cancer (Cervical Cancer), Anaplastic Small Cell Carcinoma**  
**Cervix Cancer (Cervical Cancer), Cervical Intraepithelial Neoplasia**  
**Cervix Cancer (Cervical Cancer), Malignant Mixed Müllerian Tumors**

**Squamous Cell Carcinoma:**

- Squamous Cell Carcinoma - Large Cell Keratinizing
- Squamous Cell Carcinoma - Large Cell Nonkeratinizing
- Squamous Cell Carcinoma - Papillary
- Squamous Cell Carcinoma - Sarcomatoid Squamous Carcinoma
- Squamous Cell Carcinoma - Small Cell Carcinoma
- Squamous Cell Carcinoma - Verrucous Carcinoma

**Chest Tumors (Mediastinum Tumors)**

**Chiasmal Glioma**

**Childhood Cancers**

**Chondroma, Intracranial**

**Chordoma**

**Chondrosarcoma:**

- Chondrosarcoma - Central
- Chondrosarcoma - Clear Cell
- Chondrosarcoma - Differentiated
- Chondrosarcoma - Mesenchymal

Chondrosarcoma - Peripheral

**Chorioadenoma Destruens**

**Choriocarcinoma:**

Choriocarcinoma, Syncytiotrophoblast  
Choriocarcinoma, Cytotrophoblast

**Choroid Plexus Carcinoma**

**Choroidal Melanoma**

**Chronic Leukemia**

**Chronic Lymphocytic Leukemia (CLL)**

**Chronic Myelogenous Leukemia (CML)**

**Clear Cell Ovarian Cancer**

**Clear Cell Sarcoma**

**CNS Lymphoma**

**Colon Cancer Including:**

Colon Cancer - Amine Precursor Uptake and Decarboxylation Tumor  
Colon Cancer - Cecum  
Colon Cancer - Lymphoma  
    Colon Cancer - Lymphoma - B-Cell  
    Colon Cancer - Lymphoma - T-Cell  
Colon Cancer - Hamartomatous Polyposis Syndrome  
Colon Cancer - Hereditary Nonpolyposis Colorectal Cancer  
Colon Cancer - Mucinous  
Colon Cancer, Neuroendocrine Carcinoma:  
    Colon Cancer - Neuroendocrine Carcinoma - Extrapulmonary Small Cell  
    Colon Cancer - Neuroendocrine Carcinoma - High-grade  
    Colon Cancer - Neuroendocrine Carcinoma - Oat Cell  
    Colon Cancer - Neuroendocrine Carcinoma - Well-differentiated Carcinoid  
Colon Cancer - Recurrent  
Colon Cancer - Stage A  
Colon Cancer - Stage B  
Colon Cancer - Stage C  
Colon Cancer - Stage D  
Colon Cancer - Stage I (Dukes' A)  
Colon Cancer - Stage II (Dukes' B)  
Colon Cancer - Stage III (Dukes' C)  
Colon Cancer - Stage IV  
Colon Cancer with Bone Metastases  
Colon Cancer with Brain Metastases  
Colon Cancer with Buttocks Metastases  
Colon Cancer with Liver Metastases  
Colon Cancer with Liver and Lung Metastases  
Colon Cancer with Lung Metastases

Colon Cancer with Ovarian Metastases  
Colon Cancer with Skin Metastases  
Colon Cancer - Adenocarcinoma of the Colon - Mucinous (Colloid)  
Colon Cancer - Adenocarcinoma of the Colon - Signet Ring  
Colon Cancer - Adenomatous Polyps  
Colon Cancer - Polyps

**Colorectal Cancer, Colon Cancer**

**Craniopharyngioma**

**Cutaneous T-Cell Lymphoma**

-D-

**DCIS - Ductal Carcinoma In Situ**  
**Dermatofibrosarcoma Protuberans**  
**Desmoid Tumor**  
**Desmoplastic Tumor**  
**Diffuse Lymphoma**  
**Diffuse, Large-Cell Lymphoma**  
**Ductal Carcinoma in Situ (DCIS)**  
**Duodenal Cancer**  
**Dysgerminoma**

-E-

**Early Stage Prostate Cancer****Endochodroma****Endocrine Cancer:**

- Endocrine Cancer - Multiple Endocrine Neoplasia Type 1 (MEN 1)
- Endocrine Cancer - Multiple Endocrine Neoplasia Type 2 (MEN 2)
- Endocrine Cancer - MEN 2A
- Endocrine Cancer - MEN 2B
- Endocrine Cancer - Familial Non-MEN MTC (FMTC)
- Endocrine Cancer - Sporadic MTC
- Endocrine Cancer - Sporadic Thyroid Neoplasms
- Endocrine Cancer - Papillary Thyroid Carcinoma
- Endocrine Cancer - Follicular Adenomas

**Endometrial Cancer:**

- Endometrial Cancer - Adenosarcoma
- Endometrial Cancer - Epithelial Tumors
  - Endometrial Cancer - Epithelial Tumors - Clear Cell
  - Endometrial Cancer - Epithelial Tumors - Endometrioid
  - Endometrial Cancer - Epithelial Tumors - Mucinous
  - Endometrial Cancer - Epithelial Tumors - Papillary Endometrioid
  - Endometrial Cancer - Epithelial Tumors - Papillary Serous
  - Endometrial Cancer - Epithelial Tumors - Malignant Mixed Müllerian
- Endometrial Cancer - Mesenchymal Tumors:
  - Endometrial Cancer - Mesenchymal Tumors - Endometrial Stromal Sarcoma
  - Endometrial Cancer - Mesenchymal Tumors - Leiomyosarcoma

**Ependymoma****Esophagus Cancer (Esophageal Cancer), Including:**

- Esophagus Cancer (Esophageal Cancer) - Adenoid Cystic Carcinoma
- Esophagus Cancer (Esophageal Cancer) - Mucoepidermoid Carcinoma

**Esophagus Cancer of the Gastroesophageal Junction****Esthesioneuroblastoma****Ewing's Sarcoma****Extensive Stage Small Cell Lung Cancer****Extrahepatic Bile Duct Cancer****Extraskeletal Chondrosarcoma****Extraskeletal Ewing's Sarcoma****Extraskeletal Osteosarcoma****Eye Metastases****Eye Cancer****Eye Cancer, Lymphoma**

-F-

**Fallopian Tube Cancer Including:**

- Fallopian Tube Cancer - Adenocarcinomas
- Fallopian Tube Cancer - Eiomysarcomas
- Fallopian Tube Cancer - Transitional cell carcinomas
- Fallopian Tube Cancer - Stage I
- Fallopian Tube Cancer - Stage II
- Fallopian Tube Cancer - Stage III
- Fallopian Tube Cancer - Stage IV
- Fallopian Tube Cancer - Carcinoma
- Fallopian Tube Cancer - Ovarian Cancer

**Familial Adenomatous Polyposis**

**Fibrosarcoma - See Soft Tissue Sarcomas**

**Fibrous Histiocytoma**

**Follicular Lymphoma**

**Follicular, Small-Cleaved Cell Lymphoma**

-G-

**Gardner's Syndrome****Gallbladder Cancer, Including:**

- Gallbladder Cancer - Adenocarcinoma
- Gallbladder Cancer - Mucinous Adenocarcinoma
- Gallbladder Cancer - Papillary Adenocarcinoma
- Gallbladder Cancer - Sarcoma
- Gallbladder Cancer - Squamous Cell Carcinoma

**Gastric Cancer****Gastrinoma****Gastro-Esophageal (GE Junction) Cancer****Gastrointestinal Lymphoma****Gastrointestinal Stromal Tumors (GST):**

- Gastrointestinal Stromal Tumors - Autonomic Nerve Tumor
- Gastrointestinal Stromal Tumors - Leiomyoblastoma
- Gastrointestinal Stromal Tumors - Leiomyosarcoma
- Gastrointestinal Stromal Tumors - Pacemaker Cell Tumor
- Gastrointestinal Stromal Tumors - Plexosarcoma

**Neurofibrosarcoma****GE Junction Esophageal Cancer****Germ Cell Tumor:**

- Germ Cell Tumor - Retroperitoneal Tumor
- Germ Cell Tumor - Mediastinum Tumor
- Germ Cell Tumor - Undescended Testicular Cancer

**Gestational Trophoblastic Disease****Giant Cell Bone Tumor****Glioblastoma****Glioma****Gliomatosis****Gonadal Mesothelioma****Gorlin's Syndrome (Nevoid Basal Cell Carcinoma Syndrome)****Granular Lymphocytic Lymphoma****Granulocytic Leukemia****Granulosa Cell Ovarian Cancer**

-H-

**Hairy Cell Leukemia**  
**Head and Neck Cancer**  
**Head and Neck Cancer, Adenoid Cystic**  
**Head and Neck Cancer, Squamous Cell**  
**Hemangioendothelioma**  
**Hemangiopericytoma**  
**Hepatocellular Carcinoma**  
**High-Grade Lymphoma**  
**High-Risk Breast Cancer**  
**Histiocytoma, Malignant**  
**Hodgkin's Disease**  
**Hodgkin's Disease in Pregnancy**  
**Hormone-Refractory Prostate Cancer**



**In Situ Breast Cancer**  
**Insulinoma**  
**Intermediate-Grade Lymphoma**  
**Intraocular Melanoma**  
**Invasive Lobular Breast Cancer**  
**Islet Cell Pancreatic Cancer**

**Kaposi's Sarcoma**

**Kidney Cancer (Renal Cell Carcinoma), Including:**

- Kidney Cancer (Renal Cell Carcinoma) - Birt-Hogg-Dubé (BHD)
- Kidney Cancer (Renal Cell Carcinoma) - Chromophobe Renal Carcinoma
- Kidney Cancer (Renal Cell Carcinoma) - Clear Cell Renal Carcinoma
- Kidney Cancer (Renal Cell Carcinoma) - Hereditary Papillary Renal Cell Carcinoma (HPRC)
- Kidney Cancer (Renal Cell Carcinoma) - Hereditary Leiomyomatosis Renal Cell Carcinoma (HLRCC)
- Kidney Cancer (Renal Cell Carcinoma) - Onocytoma Renal Carcinoma
- Kidney Cancer (Renal Cell Carcinoma) - Papillary Renal Carcinoma
- Kidney Cancer (Renal Cell Carcinoma) - Papillary Renal Carcinoma, Type 1
- Kidney Cancer (Renal Cell Carcinoma) - Papillary Renal Carcinoma, Type 2
- Kidney Cancer (Renal Cell Carcinoma) - Von Hippel-Lindau (VHL) Clear Cell Renal Cell Carcinoma

**Kidney Cancer with Lung Metastases**

**Krukenberg Tumor**

-L-

**Large-Cell Lung Cancer****Large-Cell Lymphoma****Large-Cell, Diffuse Lymphoma****Larynx Cancer (Laryngeal Cancer)****Leiomyosarcoma:**

Leiomyosarcoma - Foot

Leiomyosarcoma - Pulmonary Artery

Leiomyosarcoma - Vena Cava

Leiomyosarcoma - Uterus

**Lentigo Maligna****Leukemia:**

Leukemia - Acute

Leukemia - Acute Lymphocytic (ALL)

Leukemia - Acute Megakaryoblastic leukemia

Leukemia - Acute Monocytic (AML)

Leukemia - Acute Myelogenous (AML)

Leukemia - Acute Myeloid (AML)

Leukemia - Acute Promyelocytic (APL)

Leukemia - Chronic

Leukemia - B-Cell Chronic Lymphocytic Leukemia

Leukemia - Chronic granulocytic leukemia

Leukemia - Chronic Lymphocytic (CLL)

Leukemia - Chronic Myelogenous

Leukemia - Chronic Myeloid (CML)

Leukemia - Chronic Myelomonocytic (CMML)

Leukemia - CML, Philadelphia-Negative

Leukemia - CMML

Leukemia - Cutis

Leukemia - Granulocytic

Leukemia - Granulocytic Sarcomas and Chloromas (Leukemic tumors)

Leukemia - Hairy Cell

Leukemia - Infant Acute Megakaryoblastic Leukemia

Leukemia - Large Granular Lymphocyte Leukemia

Leukemia - Lymphoblastic

Leukemia - Mature B-Cell Acute Lymphocytic Leukemia

Leukemia - Precursor B-Lymphoblastic Leukemia

Leukemia - Philadelphia Chromosome-Positive Acute Lymphocytic Leukemia

Leukemia - Prolymphocytic

Leukemia - Promyelocytic

Leukemia - Secondary Myeloid Leukemia

Leukemia - T-Cell

**Li-Fraumeni syndrome****Linitis Plastica****Limited Stage Small Cell Lung Cancer**

**Lip Cancer**  
**Liposarcoma**

**Liver Cancer Including:**

- Liver Cancer - Angiosarcoma
- Liver Cancer - Cholangiocarcinoma (Bile Duct Cancer):
  - Liver Cancer - Cholangiocarcinoma (Bile Duct Cancer) - Distal
  - Liver Cancer - Cholangiocarcinoma (Bile Duct Cancer) - Hilar (Klatskin's Tumors)
  - Liver Cancer - Cholangiocarcinoma (Bile Duct Cancer) - Intrahepatic
- Liver Cancer - Cholangiocellular Carcinoma
- Liver Cancer - Emangioendotheliomas
- Liver Cancer - Epithelioid Hemangioendothelioma
- Liver Cancer - Fibrosarcoma
- Liver Cancer - Leiomyosarcoma
- Liver Cancer - Hemangioendothelioma
- Liver Cancer - Hemangiosarcoma
- Liver Cancer - Hepatic Cystadenocarcinoma
- Liver Cancer - Hepatoblastoma
- Liver Cancer - Hepatocellular Carcinoma (Liver Cell Carcinoma):
  - Liver Cancer - Hepatocellular Carcinoma (Liver Cell Carcinoma) - Carcinosarcoma
  - Liver Cancer - Hepatocellular Carcinoma (Liver Cell Carcinoma) - Childhood
  - Liver Cancer - Hepatocellular Carcinoma (Liver Cell Carcinoma) - Clear Cell
  - Liver Cancer - Hepatocellular Carcinoma (Liver Cell Carcinoma) - Combined
  - Liver Cancer - Hepatocellular Carcinoma (Liver Cell Carcinoma) - Fibrolamellar
    - Liver Cancer - Hepatocellular Carcinoma (Liver Cell Carcinoma) - Giant Cell
    - Liver Cancer - Hepatocellular Carcinoma (Liver Cell Carcinoma) - Sclerosing Hepatoblastoma
    - Liver Cancer - Hepatocellular Carcinoma (Liver Cell Carcinoma) - Spindle Cell
- Liver Cancer - Histiocytoma
- Liver Cancer - Lymphoma
- Liver Cancer - Malignant Fibrous
- Liver Cancer - Malignant Schwannoma
- Liver Cancer - Mesenchymal sarcoma
- Liver Cancer - Metastases
- Liver Cancer - Mixed Hepatocellular Cholangiocarcinoma
- Liver Cancer - Osteosarcoma
- Liver Cancer - Rhabdomyosarcoma
- Liver Cancer - Stage I
- Liver Cancer - Stage II
- Liver Cancer - Stage III
- Liver Cancer - Stage IV
- Liver Cancer - Recurrent Liver Cancer
- Liver Cancer - Undifferentiated Liver Cancer

**Lobular Carcinoma in Situ (LCIS)****Lobular Hyperplasia****Low-Grade Lymphoma****Lung Cancer:**

- Lung Cancer - Adenocarcinoma
- Lung Cancer - Bronchioalveolar
- Lung Cancer - Cystic Mucinous
- Lung Cancer - Extrapulmonary Small Cell Anaplastic Carcinoma - Limited
- Lung Cancer - Extrapulmonary Small Cell Anaplastic Carcinoma - Extensive
- Lung Cancer - Germ Cell
- Lung Cancer - Giant Cell
- Lung Cancer - Large-Cell
- Lung Cancer - Mucinous
- Lung Cancer - Non-Small Cell Lung Cancer - Including:
  - Lung Cancer - Non-Small Cell Lung Cancer - (NSCLC)
  - Lung Cancer - Non-Small Cell Lung Cancer with Bone Metastases
  - Lung Cancer - Non-Small Cell Lung Cancer with Brain Metastases
  - Lung Cancer - Non-Small Cell Lung Cancer with Liver Metastases
  - Lung Cancer - Non-Small Cell Lung Cancer with Lymph Node Metastases
  - Lung Cancer - Non-Small Cell Lung Cancer with Skin Metastases
  - Lung Cancer - Non-Small Cell Lung Cancer - Stage I
  - Lung Cancer - Non-Small Cell Lung Cancer - Stage IIA
  - Lung Cancer - Non-Small Cell Lung Cancer - Stage IIB
  - Lung Cancer - Non-Small Cell Lung Cancer - Stage IIIA
  - Lung Cancer - Non-Small Cell Lung Cancer - Stage IIIB
  - Lung Cancer - Non-Small Cell Lung Cancer - Stage IV
  - Lung Cancer - Non-Small Cell Lung Cancer - Recurrent
- Lung Cancer - Adenocarcinomas:
  - Lung Cancer - Adenocarcinomas - Acinar
  - Lung Cancer - Adenocarcinomas, Bronchioloalveolar Carcinoma
    - Lung Cancer - Adenocarcinomas, Bronchioloalveolar Carcinoma, Nonmucinous (Clara Cell/type II Pneumocyte Type)
    - Lung Cancer - Adenocarcinomas, Bronchioloalveolar Carcinoma, Mixed Mucinous and Nonmucinous/Indeterminate cell type
    - Lung Cancer - Adenocarcinomas, Bronchioloalveolar Carcinoma, Mucinous (Goblet Cell) type
  - Lung Cancer - Adenocarcinomas - Clear Cell Adenocarcinoma
  - Lung Cancer - Adenocarcinomas - Mucinous (Colloid) Adenocarcinoma
  - Lung Cancer - Adenocarcinomas - Mucinous Cystadenocarcinoma
  - Lung Cancer - Adenocarcinomas - Papillary
  - Lung Cancer - Adenocarcinomas - Signet-Ring Adenocarcinoma
  - Adenocarcinomas - Solid Adenocarcinoma with Mucin Formation
  - Lung Cancer - Adenocarcinomas - Well-differentiated Fetal Adenocarcinoma

**Adenosquamous Carcinoma****Atypical Adenomatous Hyperplasia****Carcinoid Tumors, Atypical**

**Carcinoid Tumors, Typical****Carcinosarcoma****Diffuse Idiopathic Pulmonary Neuroendocrine Cell Hyperplasia****Epidermoid Carcinoma****Giant Cell Carcinoma****Large Cell Carcinoma:**

- Large Cell Carcinoma - Basaloid Carcinoma
- Large Cell Carcinoma - Clear Cell Carcinoma
- Large Cell Carcinoma - Combined Large Cell Neuroendocrine Carcinoma
- Large Cell Carcinoma - Large Cell Carcinoma with Rhabdoid Phenotype
- Large Cell Carcinoma - Large Cell Neuroendocrine Carcinoma
- Large Cell Carcinoma - Lymphoepithelioma-like Carcinoma

**Pleomorphic Carcinoma****Pulmonary Blastoma****Spindle Cell Carcinoma****Squamous Cell Carcinomas:**

- Squamous Cell Carcinomas - Basaloid
- Squamous Cell Carcinomas - Clear Cell
- Squamous Cell Carcinomas - Papillary
- Squamous Cell Carcinomas - Small Cell

**Lung Cancer, Squamous Dysplasia/Carcinoma in situ****Lung Cancer, Superior Sulcus Tumors (Pancoast tumors)****Lung Cancer, Unclassified****Lung Cancer, Recurrent****Lung Cancer, Small Cell:**

- Lung Cancer - Small Cell - Combined small cell carcinoma
- Lung Cancer - Small Cell - Mixed small cell/large cell carcinoma
- Lung Cancer - Small Cell - Pure small cell
- Lung Cancer - Small Cell - Extensive Stage
- Lung Cancer - Small Cell - Limited Stage
- Lung Cancer - Small Cell with Brain Metastases

**Lung Cancer, Squamous****Lung Cancer, Stage I****Lung Cancer, Stage II****Lung Cancer, Stage III****Lung Cancer, Stage IIIA****Lung Cancer, Stage IIIB****Lung Cancer, Stage IV****Lung Cancer with Adrenal Gland Metastases****Lung Cancer with Bone Metastases****Lung Cancer with Brain Metastases****Lung Cancer with Liver Metastases****Lung Cancer with Lymph Node Metastases****Lung Cancer with Ovarian Metastases****Lung Cancer with Skin Metastases****Lung Metastases**

**Lymph Node Excision****Lymphangitic Metastasis****Lymph Node Metastases****Lymphoblastic Leukemia****Lymphoblastic Lymphoma****Lymphocytic Lymphoma****Lymphoma:**

- Lymphoma - Lymphoblastic Lymphoma
- Lymphoma - Lymphocytic Lymphoma
- Lymphoma - Lymphocytic, Large Granular
- Lymphoma - Lymphocytic, Small
- Lymphoma - AIDS Related
- Lymphoma - Anaplastic
- Lymphoma - Anaplastic Large Cell (ALCL)
- Lymphoma - Breast
- Lymphoma - B-Cell
- Lymphoma - B-Cell Large- Lymphomatoid Granulomatosis Type
- Lymphoma - B-Cell Large Diffuse
- Lymphoma - B-Cell Monocytoid
- Lymphoma - Central Nervous System
- Lymphoma - Cutaneous T-Cell:
  - Lymphoma - Cutaneous T-Cell - Mycosis Fungoides, Agetoid Reticulosis or Woringer-Kolopp disease
- Lymphoma, Granulomatous slack skin:
  - Lymphoma - Granulomatous slack skin - Lymphomatoid
  - Lymphoma - Granulomatous slack skin - Papulosis
  - Lymphoma - Granulomatous slack skin - Primary
  - Lymphoma - Granulomatous slack skin - Cutaneous
- Lymphoma - CD30+ Large T-cell Lymphoma
- Lymphoma - CD56+ "Nasal-Type" NK/T-Cell Lymphoma
- Lymphoma - Diffuse
- Lymphoma - Diffuse, Large-Cell
- Lymphoma - Enteropathy-Type T-Cell Lymphoma
- Lymphoma - Eye
- Lymphoma - Follicular
- Lymphoma - Follicular, Small-Cleaved Cell
- Lymphoma - Gastrointestinal
- Lymphoma - Granular, Lymphocytic
- Lymphoma - Hepatosplenic T-Cell Lymphoma
- Lymphoma - High-Grade
- Lymphoma - Hodgkin's Disease:
  - Lymphoma - Hodgkin's Disease - Paragranuloma
  - Lymphoma - Hodgkin's Disease - Granuloma
  - Lymphoma - Hodgkin's Disease - Sarcoma
  - Lymphoma - Hodgkin's Disease - Nodular Lymphocyte-Predominant Hodgkin's Lymphoma

- Lymphoma - Hodgkin's Disease - Nodular Lymphocyte-Predominant Hodgkin's Lymphoma
- Lymphoma - Hodgkin's disease - Mixed-Cellularity Hodgkin's Lymphoma
- Lymphoma - Hodgkin's disease - Nodular Sclerosis Hodgkin's Lymphoma
- Lymphoma - Hodgkin's disease - Lymphocyte-Depleted Hodgkin's Lymphoma
- Lymphoma - Hodgkin's disease - Lymphocyte-Predominant Hodgkin's Lymphoma
- Lymphoma - Hodgkin's disease - Lymphocyte-Rich Classic Hodgkin's Lymphoma
- Lymphoma - Intermediate Grade**
- Lymphoma - Hodgkin's disease, Intravascular Large B-Cell Lymphoma**
- Lymphoma - Large-Cell**
- Lymphoma - Large-Cell, Diffuse**
- Lymphoma - Low-Grade**
- Lymphoma - Hodgkin's disease, Low-Grade B-Cell Lymphoma of Mucosa-Associated Lymphoid Tissue**
- Lymphoma - Hodgkin's disease, Lymphoplasmacytic lymphoma**
- Lymphoma - MALT**
- Lymphoma - Mantle Cell**
- Lymphoma - Non-Hodgkin's, Including:**
  - Lymphoma - Non-Hodgkin's - High Grade
  - Lymphoma - Non-Hodgkin's - Intermediate Grade
  - Lymphoma - Non-Hodgkin's - Low Grade
  - Lymphoma - Non-Hodgkin's - Burkitt's & Atypical Burkitt's
  - Lymphoma - Non-Hodgkin's - Diffuse
  - Lymphoma - Non-Hodgkin's - Non-Burkitt's
  - Lymphoma - Non-Hodgkin's - T-Cell, Cutaneous
  - Lymphoma - Non-Hodgkin's - Immunoblastic Diffuse
  - Lymphoma - Non-Hodgkin's - Large Cell Follicular
  - Lymphoma - Non-Hodgkin's - Mixed Cell Diffuse
  - Lymphoma - Non-Hodgkin's - Small Cleaved Cell Follicular
  - Lymphoma - Non-Hodgkin's - Small Lymphocytic
  - Lymphoma - Non-Hodgkin's - Mixed Follicular
  - Lymphoma - Non-Hodgkin's - Small Cleaved Cell Diffuse,
  - Lymphoma - Non-Hodgkin's - Intermediately Differentiated Diffuse
  - Lymphoma - Non-Hodgkin's - Cutaneous T-cell
- Lymphoma, Orbital**
- Lymphoma, Peripheral T-Cell**
- Precursor B-Lymphoblastic Lymphoma**
- Lymphoma, Primary Central Nervous System**
- Primary Effusion Lymphoma**
- Primary leptomeningeal lymphoma**
- Primary Mediastinal (Thymic) Large B-Cell Lymphoma**
- Primary spinal cord lymphoma**
- Richter's lymphoma**



**Lymphoma, Small Cleaved Cell**  
**Lymphoma, Soft tissue**  
**Splenic Marginal Zone Lymphoma with or without Villous Lymphocytes**  
**Subcutaneous Panniculitis-Like T-Cell Lymphoma**  
**Lymphoma, T-Cell**  
**Lymphoma, T-Cell, Cutaneous**  
**T-Cell-Rich/Histiocyte-Rich Large B-Cell Lymphoma**  
**Lymphoma, Thyroid**

-M-

**Malignant Ascites****Malignant Carcinoid Syndrome:**

Malignant Carcinoid Syndrome - Atypical

Malignant Carcinoid Syndrome - Typical

**Malignant Hemangiopericytoma****Malignant Fibrous Histiocytoma****Malignant Peripheral Nerve Sheath Tumor****Malignant Pleural Effusion****Malignant Pleural Mesothelioma****Malignant Schwannoma****MALT Lymphoma****Mantle Cell Lymphoma****Mediastinal Neoplasms, including:**

Mediastinal Neoplasms - Chemodectoma (Paraganglioma)

Mediastinal Neoplasms - Choriocarcinoma

Mediastinal Neoplasms - Endodermal Sinus Tumors (Yolk Sac Tumors)

Mediastinal Neoplasms - Fibroelastoma

Mediastinal Neoplasms - Fibroma

Mediastinal Neoplasms - Fibrosarcoma

Mediastinal Neoplasms - Ganglioneuroblastoma

Mediastinal Neoplasms - Ganglioneuroma

Mediastinal Neoplasms - Granular Cell Myoblastomas

Mediastinal Neoplasms - Hemangioendothelioma

Mediastinal Neoplasms - Hemangioma

Mediastinal Neoplasms, Histiocytic Lymphoma

Mediastinal Neoplasms, Immature Teratomas

Mediastinal Neoplasms, Leiomyoma

Mediastinal Neoplasms, Leiomyosarcoma

Mediastinal Neoplasms, Lipoma

Mediastinal Neoplasms, Liposarcoma

Mediastinal Neoplasms, Lymphangioma

Mediastinal Neoplasms, Lymphangiomyoma

Mediastinal Neoplasms, Malignant Fibrous Histiocytoma

Mediastinal Neoplasms, Mesenchymoma

Mediastinal Neoplasms, Mixed Embryonal Cell Carcinoma,

Mediastinal Neoplasms, Mixed Embryonal Cell Carcinoma, with Endodermal  
Sinus ElementsMediastinal Neoplasms, Mixed Embryonal Cell Carcinoma, with Seminomatous  
Elements

Mediastinal Neoplasms, Mixed Embryonal Cell Carcinoma, with Tetroid

Elements

Mediastinal Neoplasms, Mixed Embryonal Cell Carcinoma, with Trophoblastic  
Elements

- Mediastinal Neoplasms, Myxoma
- Mediastinal Neoplasms, Neuroblastoma
- Mediastinal Neoplasms, Neurofibroma
- Mediastinal Neoplasms, Neuroilemoma (schwannoma)
- Mediastinal Neoplasms, Neurosarcoma
- Mediastinal Neoplasms, Nonseminomatous
- Mediastinal Neoplasms, Permeative Neuroectodermal Tumor
- Mediastinal Neoplasms, Pheochromocytoma
- Mediastinal Neoplasms, Pure Embryonal Cell Carcinoma
- Mediastinal Neoplasms, Rhabdomyosarcoma
- Mediastinal Neoplasms, Seminoma
- Mediastinal Neoplasms, Xanthogranuloma

**Medullary Thyroid Carcinoma****Medulloblastoma****Melanomas including:**

- Melanomas, Amelanotic melanoma
- Melanomas, Cutaneous
- Melanomas, Intraocular
- Melanomas, Uveal-spindle cell (A, B, or both), mixed cell, epithelioid cell
- Melanomas, Soft Tissue
- Melanomas, Extraocular Extension
- Melanomas, Multiple Choroidal Malignant Melanoma
- Melanomas, with Brain Metastases
- Melanomas, with Liver Metastases
- Melanomas, with Lung Metastases
- Melanomas, Melanoma-associated retinopathy

**Meningeal Cancer****Meningeal Metastases****Meningioma****Merkel Cell Carcinoma****Merkel Cell Skin Cancer****Mesothelioma:**

- Mesothelioma, Biphasic
- Mesothelioma, Epithelial
- Mesothelioma, Poorly Differentiated
- Mesothelioma, Sarcomatoid

**Mesenchymal Chondrosarcoma****Metastatic carcinoma of unknown primary site:**

Metastatic carcinoma of unknown primary site, poorly differentiated neoplasm  
Metastatic carcinoma of unknown primary site, poorly differentiated carcinoma (with or without features of adenocarcinoma)  
Metastatic carcinoma of unknown primary site, well-differentiated and moderately well-differentiated adenocarcinoma  
Metastatic carcinoma of unknown primary site, Metastatic gestational Choriocarcinoma

**Metastatic Melanoma**

**Mixed Mullerian Tumor**

**Mucinous Carcinoma**

**Multiple Myeloma**

**Muscle-Invasive Bladder Tumor**

**Mycosis Fungoides**

**Myeloblastomas (chloromas or granulocytic sarcomas)**

**Myelodysplasia**

**Myelodysplastic Syndrome**

**Myeloma, Bence-Jones**

**Myeloproliferative Disorder**

**Myelodysplastic syndromes (MDS):**

Myelodysplastic syndromes (MDS), refractory anemia (RA),  
Myelodysplastic syndromes (MDS), preleukemia, or smoldering leukemia  
Myelodysplastic syndromes (MDS), hypocellular MDS  
Myelodysplastic syndromes (MDS), with extensive fibrosis  
Myelodysplastic syndromes (MDS), unclassifiable MDS  
Myelodysplastic syndromes (MDS), 5q- syndrome  
Myelodysplastic syndromes (MDS), with Myelofibrosis  
Myelodysplastic Syndromes (MDS), hypoplastic  
Myelodysplastic Syndromes (MDS), with Eosinophilia or Basophilia

-N-

**Nail/Nail Bed Cancer**  
**Nasal Cavity Cancer**  
**Nasopharynx Cancer**  
**Neck, Radical Dissection**  
**Neoplastic Meningitis**  
**Nerve Sheath Tumors**  
**Neuroblastoma (Adult)**  
**Neuroblastoma (Child)**

**Neuroendocrine Tumors:**

Neuroendocrine Tumors, Carcinoids (Foregut, Hindgut, Midgut)  
Neuroendocrine Tumors, Glandular  
Neuroendocrine Tumors, Insular  
Neuroendocrine Tumors, Mixed  
Neuroendocrine Tumors, Trabecular  
Neuroendocrine Tumors, Undifferentiated

**Neurofibromatosis Type I (Von Reckling-Hausen's Disease)**  
**Neurologic Paraneoplastic Syndrome**  
**Nose Tumor**

-O-

**Ocular Melanoma**  
**Olfactory Cancer**  
**Oligodendroglioma**  
**Optic Glioma**  
**Oral Cancer**  
**Orbital Lymphoma**  
**Oropharynx Cancer**  
**Osteochondroma**  
**Osteogenic Sarcoma**  
**Osteoid Tumors**

**Osteosarcoma:**

Osteosarcoma, Central Medullary  
Osteosarcoma, Low-Grade Intraosseous  
Osteosarcoma, Paget's Sarcoma  
Osteosarcoma, Parosteal  
Osteosarcoma, Periosteal  
Osteosarcoma, Small Cell

**Ovarian Cancer (Adult)**  
**Ovarian Cancer (Child)**  
**Ovarian Cancer, Advanced**

**Ovarian Cancer, Androblastoma:**

Ovarian Cancer, Androblastoma, Gynandroblastoma  
Ovarian Cancer, Androblastoma, Hilus Cell Tumor  
Ovarian Cancer, Androblastoma, Sertolid Cell Tumor (Tubular Adenoma of Pick)  
Ovarian Cancer, Androblastoma, Sertoli-Leydig Cell Tumor  
Ovarian Cancer, Androblastoma, Leydig Cell Tumor  
Ovarian Cancer, Androblastoma, Tubular Androblastoma  
Ovarian Cancer, Androblastoma, Unclassified

**Ovarian Cancer, Borderline:**

Ovarian Cancer, Borderline, Endometrioid  
  
Ovarian Cancer, Borderline, Mucinous,  
Ovarian Cancer, Borderline, Mucinous, Micropapillary Serous Carcinoma  
Ovarian Cancer, Borderline, Mucinous, Pseudomyxoma Peritonei Serous

**Ovarian Cancer, Carcinosarcoma****Ovarian Cancer, Endometrioid Tumor:**

Ovarian Cancer, Endometrioid Tumor, Brenner Tumor

Ovarian Cancer, Endometrioid Tumor, Carcinoma

Ovarian Cancer, Endometrioid Tumor, Carcinoma, Adenoacanthoma

Ovarian Cancer, Endometrioid Tumor, Carcinoma, Adenocarcinoma

Ovarian Cancer, Endometrioid Tumor, Carcinoma, Malignant Adenofibroma,

Ovarian Cancer, Endometrioid Tumor, Carcinoma, Malignant

Adenofibroma,

Ovarian Cancer, Endometrioid Tumor, Carcinoma, Cystadenofibroma

Ovarian Cancer, Endometrioid Tumor, Clear Cell (mesonephroid) Tumor,

Ovarian Cancer, Endometrioid Tumor, Clear Cell (mesonephroid) Tumor,  
Adenocarcinoma

Ovarian Cancer, Endometrioid Tumor, Clear Cell (mesonephroid) Tumor,  
Carcinoma

Ovarian Cancer, Endometrioid Tumor, Endometrioid Stromal Sarcoma

Ovarian Cancer, Endometrioid Tumor, Mesodermal (Mullerian) Mixed Tumor,

Ovarian Cancer, Endometrioid Tumor, Mesodermal (Mullerian) Mixed Tumor,  
Heterologous

Ovarian Cancer, Endometrioid Tumor, Mesodermal (Mullerian) Mixed Tumor,  
Homologous

Ovarian Cancer, Endometrioid Tumor, Mixed Epithelial Tumor

Ovarian Cancer, Endometrioid Tumor, Unclassified

Ovarian Cancer, Endometrioid Tumor, Undifferentiated Carcinoma

**Ovarian Cancer, Epithelial****Ovarian Cancer, Germ Cell:**

Ovarian Cancer, Germ Cell, Dysgerminoma

Ovarian Cancer, Germ Cell, Embryonal Carcinoma

Ovarian Cancer, Germ Cell, Endodermal Sinus Tumor

Ovarian Cancer, Germ Cell, Polyembryoma

**Ovarian Cancer, Gonadoblastoma:**

Ovarian Cancer, Gonadoblastoma, Mixed

Ovarian Cancer, Gonadoblastoma, Pure

**Ovarian Cancer, Granulosa-Stromal Cell Tumor:**

Ovarian Cancer, Granulosa-Stromal Cell Tumor, Fibroma  
 Ovarian Cancer, Granulosa-Stromal Cell Tumor, Granulosa Cell Tumor  
 Ovarian Cancer, Granulosa-Stromal Cell Tumor, Thecoma-Fibroma Tumor  
 Ovarian Cancer, Granulosa-Stromal Cell Tumor, Unclassified

**Ovarian Cancer, Lipoid Cell Tumor:**

Ovarian Cancer, Lipoid Cell Tumor, Choriocarcinoma  
 Ovarian Cancer, Lipoid Cell Tumor, Mixed

Ovarian Cancer, Lipoid Cell Tumor, Teratoma,  
 Ovarian Cancer, Lipoid Cell Tumor, Teratoma, Carcinoid  
 Ovarian Cancer, Lipoid Cell Tumor, Teratoma, Immature  
 Ovarian Cancer, Lipoid Cell Tumor, Teratoma, Mature Dermoid Cyst with  
 Malignant Transformation  
 Ovarian Cancer, Lipoid Cell Tumor, Teratoma, Monodermal  
 Ovarian Cancer, Lipoid Cell Tumor, Teratoma, Struma Ovarii  
 Ovarian Cancer, Lipoid Cell Tumor, Teratoma, Struma Ovarii and Carcinoid

**Ovarian Cancer, Malignant Mucinous Tumor:**

Ovarian Cancer, Malignant Mucinous Tumor, Adenocarcinoma  
 Ovarian Cancer, Malignant Mucinous Tumor, Adenocarcinoma  
 Cystadenocarcinoma  
 Ovarian Cancer, Malignant Mucinous Tumor, Malignant Adenofibroma  
 Ovarian Cancer, Malignant Mucinous Tumor, Malignant Adenofibroma  
 Cystadenofibroma

**Ovarian Cancer, Malignant Serous Tumor:**

Ovarian Cancer, Malignant Serous Tumor, Adenocarcinoma,  
 Ovarian Cancer, Malignant Serous Tumor, Adenocarcinoma, Papillary  
 Adenocarcinoma  
 Ovarian Cancer, Malignant Serous Tumor, Adenocarcinoma, Papillary  
 Cystadenocarcinoma  
 Ovarian Cancer, Malignant Serous Tumor, Malignant Adenofibroma,  
 Ovarian Cancer, Malignant Serous Tumor, Malignant Adenofibroma,  
 Cystadenofibroma  
 Ovarian Cancer, Malignant Serous Tumor, Surface Papillary Carcinoma

**Ovarian Cancer, Peritoneal**  
**Ovarian Cancer, Recurrent**  
**Ovarian Cancer, Sarcoma**  
**Ovarian Cancer, Stage I**



**Ovarian Cancer, Stage II**  
**Ovarian Cancer, Stage III**  
**Ovarian Cancer, Stage IV**  
**Ovarian Cancer, Stromal Cell**  
**Ovarian Cancer with Bone Metastases**  
**Ovarian Cancer with Liver Metastases**  
**Ovarian Cancer with Lung Metastases**  
**Ovarian Cancer with Meningeal Metastases**  
**Ovarian Cancer with Pleural Effusion**  
**Ovarian Cancer with Spleen Metastases**

-P-

**Paget's Disease of the Breast****Pancreatic Cancer including:**

Pancreatic Cancer, Acinar cell carcinoma

Pancreatic Cancer, Adenocarcinoma:

Pancreatic Cancer - Adenocarcinoma, Anaplastic

Pancreatic Cancer - Adenocarcinoma, Adenosquamous

Pancreatic Cancer - Adenocarcinoma, Colloid Ductal (mucinous noncystics)

Pancreatic Cancer - Adenocarcinoma, Ductal Adenocarcinoma

Pancreatic Cancer - Adenocarcinoma, Medullary

Pancreatic Cancer - Adenocarcinoma, Signet-ring Cell

Pancreatic Cancer - Adenocarcinoma, Undifferentiated carcinoma with osteoclast-like giant cells

Pancreatic Cancer- Carcinoid

Pancreatic Cancer, Cystic Neoplasms:

Pancreatic Cancer, Cystic Neoplasms, Intraductal Papillary Mucinous Neoplasms

Pancreatic Cancer, Cystic Neoplasms, Mucinous Cystic Neoplasms

Pancreatic Cancer, Cystic Neoplasms, Mucinous Cystic Neoplasms Borderline

Pancreatic Cancer, Cystic Neoplasms, Mucinous Cystic Neoplasms Cystadenocarcinoma

Pancreatic Cancer, Cystic Neoplasms, Mucinous Cystic Neoplasms Cystadenoma

Pancreatic Cancer, Cystic Neoplasms, Mucinous Cystic Neoplasms Mucinous Cystic Neoplasm with In Situ Carcinoma

Pancreatic Cancer, Cystic Neoplasms, Serous Cystic Neoplasms

Pancreatic Cancer, Inoperable

Pancreatic Cancer, Islet Cell

Pancreatic Cancer, Islet Cell, gastrinoma

Pancreatic Cancer, Islet Cell, insulinoma

Pancreatic Cancer, Islet Cell, glucagonoma

Pancreatic Cancer - Operable

Pancreatic Cancer - Pancreatoblastoma

Pancreatic Cancer with Liver Metastases

Pancreatic Cancer - Stage I

Pancreatic Cancer - Stage II

Pancreatic Cancer - Stage III

Pancreatic Cancer - Stage IVA  
 Pancreatic Cancer - Stage IVB  
 Pancreatic Cancer - Pancreatic endocrine tumors (PET)  
 Pancreatic Cancer - PPoma  
 Pancreatic Cancer - VIPoma  
 Pancreatic Cancer, Recurrent Pancreatic Cancer  
 Pancreatic Cancer, Islet cell tumors, gastrinoma  
 Pancreatic Cancer, Borderline Pancreatic Tumors

**Paranglioma****Paranasal Sinus Cancer****Paraneoplastic Syndromes****Ectopic Adrenocorticotrophic Hormone Syndrome:**

Syndrome of Inappropriate Antidiuretic Hormone Production  
 Protein-Losing Enteropathy  
 Cutaneous paraneoplastic syndrom  
 Paget's disease of the breast Pancreatic Cancer, Islet Cell

Acrokeratosis paraneoplastica  
 Melanosis  
 acanthosis nigricans  
 Sweet's syndrome  
 Necrolytic migratory erythema  
 Multicentric reticulohistiocytosis  
 Paraneoplastic pemphigus  
 Acquired ichthyosis  
 Dermatomyositis  
 Pachydermoperiostosis  
 Hypertrichosis lanuginosa acquisita (malignant down)  
 Muir-Torre syndrome  
 Subacute Sensory Neuropathy and Encephalomyeloneuritis  
 Limbic Encephalitis  
 Acute polyradiculoneuropathy  
 Hypertrophic Osteoarthropathy  
 Dermatomyositis  
 Paraneoplastic Peripheral Neuropathies  
 Paraneoplastic Motor Neuron Disorders  
 Paraneoplastic Vision Loss  
 Neuromuscular Junction Disorders  
 Paraneoplastic neuromyotonia  
 paraneoplastic encephalomyelitis  
 Paraneoplastic parkinsonian syndromes

**Parathyroid neoplasia**

**Parathyroid carcinoma**  
**Parotid Gland Cancer**  
**Pelvic Tumor**

**Penis Cancer:**

Penis Cancer - Advanced Penile Cancer  
 Penis Cancer - Balantitis Xerotica Obliterans  
 Penis Cancer - Buschke-Löwenstein Tumor  
 Penis Cancer - Carcinoma In Situ  
 Penis Cancer - Invasive Penile Cancer  
 Penis Cancer - Penile Verrucous Carcinoma

**Periampullary Cancer**

**Pericardial Effusion:**

Pericardial Mesothelioma  
 Peripheral Nerve Sheath Tumor  
 Peripheral T-Cell Lymphoma

**Peritoneal cancer:**

Disseminated peritoneal adenomucinosis  
 Extraovarian Serous Carcinoma  
 Extraovarian Peritoneal Serous Papillary Carcinoma  
 Serous Surface Carcinoma of the Peritoneum  
 Serous Surface Papillary Carcinoma  
 Papillary Serous Carcinoma of the Peritoneum  
 Multiple Focal Peritoneal Papillary Carcinoma  
 Primary peritoneal carcinoma  
 Primary Peritoneal Mesothelioma:  
   Adenomatoid  
   localized fibrous mesothelioma  
   multicystic and well-differentiated papillary peritoneal mesotheliomas  
   epithelial  
   sarcomatoid  
   mixed (elements of both epithelial and sarcomatoid)  
 Primary Peritoneal Papillary Serous Adenocarcinoma  
 Peritoneal Carcinomatosis:  
   mucinous adenocarcinoma of the appendix and colon  
   adenocarcinoma of the colon, stomach, or pancreas  
 Pseudomyxoma Peritonei

**Peutz-Jeghers syndrome**  
**Pheochromocytoma**  
**Pinealoma**  
**Pineoblastoma**

**Placental-Site Trophoblastic Tumors**  
**Plasmacytoma**

**Plasma Cell Neoplasms:**

plasma cell myeloma  
 monoclonal gammopathy of unknown significance (MGUS)  
 astleman's disease  
 $\alpha$ -heavy-chain disease  
 Waldenström's macroglobulinemia (WM)  
 plasma cell leukemia  
 multiple myeloma (MM)  
 Solitary Plasmacytoma  
 Indolent MyelomaPleura Cancer

**Pleura Metastases**

**Pleural Effusion, Malignant**

**Pleural Mesothelioma, Malignant**

**Preleukemia**

**Primary Central Nervous System Lymphoma**

**Primitive Neuroectodermal Tumor (PNET) (Adult)**

**Primitive Neuroectodermal Tumor (PNET) (Child)**

**Prolymphocytic Leukemia**

**Promyelocytic Leukemia**

**Prophylactic Mastectomy**

**Prostate Cancer:**

Acinar Adenocarcinoma  
 Ductal Carcinoma  
 Intralobular Acinar Carcinoma  
 Malignant Mesenchymal Tumors  
   Angiosarcoma  
   Chondrosarcoma  
   Liposarcoma  
   Myosarcoma  
   Osteosarcoma  
   Rhabdomyosarcomas  
   Leiomyosarcomas  
 Mucinous Carcinoma  
 Proximal Ductal Epithelium Adenocarcinoma  
 Scirrhous Pattern Tumors  
 Transitional Cell Tumors

**Prostate Cancer, Early-Stage**

**Prostate Cancer, Hormone Refractory**

**Prostate Cancer in the Elderly**

**Prostate Cancer, Small Cell**

**Prostate Cancer, Stage A (Stage I)**  
**Prostate Cancer, Stage B (Stage II)**  
**Prostate Cancer, Stage C (Stage III)**  
**Prostate Cancer, Stage D (Stage IV)**  
**Prostate Cancer, Transitional Cell**  
**Prostate Cancer with Bone Metastases**  
**Prostatic Intraepithelial Neoplasia (PIN)**  
**PSA**  
**Pseudomyxoma Peritonei**

-R-

**Rectal Cancer, Stage I**  
**Rectal Cancer, Stage II**  
**Rectal Cancer, Stage III**  
**Rectal Cancer with Brain Metastases**  
**Rectal Cancer with Liver Metastases**  
**Recurrent Colon Cancer**  
**Recurrent Colorectal Cancer**  
**Recurrent Lung Cancer**  
**Recurrent Melanoma**  
**Recurrent Ovarian Cancer**  
**Recurrent Prostate Cancer**  
**Recurrent Rectal Cancer**  
**Relapsed Lymphoma**  
**Renal Cell Carcinoma**  
**Renal Cell Carcinoma with Lung Metastases**  
**Renal Pelvis Cancer**  
**Retinoblastoma (Adult)**  
**Retinoblastoma (Child)**  
**Rhabdomyosarcoma**  
**Richter's Syndrome**  
**Rising PSA as an Indication of Recurrent Prostate Cancer**

-S-

**Salivary Gland Cancer including:**

Adenoid cystic carcinoma  
Mucoepidermoid carcinoma

**Sarcoma of Bone****Sarcomatoid Carcinoma****Schwannoma, Malignant****Sebaceous Carcinoma****Sezary Syndrome****Sinus, Cavernous****Sinus Cancer****Sinus Cancer, Cavernous****Sinus Cancer, Endodermal****Sinus Cancer, Esthesioneuroblastoma****Sinus Cavity Cancer****Skin Cancer:**

Basal Cell- nodular, nevoid, superficial, morpheaform (also termed aggressive-growth BCC or infiltrative BCC), pigmented, cystic BCC, and fibroepithelioma of Pinkus (FEP)

Merkel Cell

Squamous Cell- keratoacanthoma, periungual

Skin Metastases

Atypical fibroxanthoma

Actinic keratoses

Dermatofibroma

Desmoplastic trichoepithelioma

Microcystic adnexal carcinoma

Non-melanoma skin cancer

Verrucous carcinoma

Malignant Fibrous Histiocytoma

Dermatofibrosarcoma Protuberans

Bednar Tumor

Angiosarcoma

Kaposi's Sarcoma

Carcinoma Metastatic to Skin

**Small Cell Bladder Cancer****Small Cell Lung Cancer****Small Cell Lung Cancer, Extensive Stage**



**Small Cell Lung Cancer, Limited Stage**  
**Small Cell Lung Cancer with Brain Metastases**  
**Small Cell Lung Cancer with Liver Metastases**  
**Small Cleaved Cell Lymphoma**

**Small Intestine Cancer, including:**

Adenocarcinoma  
Carcinoid  
    Foregut  
    Hindgut  
    Midgut  
Fibromatosis (Desmoid Tumor)  
Gastrointestinal Stromal Tumor  
Inflammatory Fibroid Polyps  
Lymphoma  
    Burkitt's Lymphoma  
    Diffuse Large B-Cell Lymphoma  
    Mucosal-Associated Lymphoid Tissue Lymphoma  
    T-Cell Lymphomas of the Small Intestine  
Myofibroblastic Tumor  
Schwannoma  
Simple Leiomyoma  
Solitary Fibrous Tumor  
True Leiomyoma

**Soft Tissue Lymphoma**

**Soft Tissue Sarcoma:**

Soft Tissue Sarcoma (Adult)  
Soft Tissue Sarcoma (Child)  
Soft Tissue Sarcoma, Angiosarcoma  
Soft Tissue Sarcoma, Clear Cell  
Soft Tissue Sarcoma, Dermatofibrosarcoma Protuberans  
Soft Tissue Sarcoma, Hemangiopericytoma  
Soft Tissue Sarcoma, Leiomyosarcoma  
Soft Tissue Sarcoma, Liposarcoma  
Soft Tissue Sarcoma, Malignant Fibrous Histiocytoma  
Soft Tissue Sarcoma, Primitive Neuroectodermal (Adult)  
Soft Tissue Sarcoma, Primitive Neuroectodermal (Child)  
Soft Tissue Sarcoma, Rhabdomyosarcoma  
Soft Tissue Sarcoma, Synovial  
Synovial Sarcoma

**Epithelioid Sarcoma:**

Ewing's Sarcoma  
Extraskeletal Cartilaginous Tumors

- Extraskelatal Chondrosarcoma
  - Mesenchymal Chondrosarcoma
  - Myxoid Chondrosarcoma
- Extraskelatal Osteosarcoma
- Fibrohistiocytic Tumors
  - Atypical Fibroxanthoma
  - Angiomatoid Fibrous Histiocytoma
  - Dermatofibrosarcoma Protuberans
  - Giant Cell Fibroblastoma
  - Malignant Fibrous Histiocytoma
    - Giant Cell
    - Inflammatory
    - Myxoid
    - Storiform-Pleomorphic
  - Plexiform Fibrohistiocytic Tumor
- Fibrous Tumors
  - Fibromatoses
    - Deep Fibromatoses
      - Abdominal Fibromatosis
      - Extraabdominal Fibromatosis
      - Intraabdominal Fibromatosis
      - Infantile Fibromatosis
      - Mesenteric Fibromatosis
    - Superficial Fibromatoses
      - Palmar
      - Penile (Peyronie's Fibromatosis)
  - Fibrosarcoma
    - Adult Fibrosarcoma
    - Inflammatory Fibrosarcoma
    - Infantile Fibrosarcoma
    - Inflammatory Myofibroblastic Tumor
- Gastrointestinal Stromal Tumors
- Kaposi's Sarcoma
- Lipomatous Tumors
  - Atypical Lipoma
  - Liposarcoma
    - Dedifferentiated Liposarcoma
    - Myxoid (Round Cell) Liposarcoma
    - Pleomorphic Liposarcoma
    - Well-differentiated Liposarcoma
      - Inflammatory Liposarcoma
      - Lipoma-like Liposarcoma
      - Sclerosing Liposarcoma
- Lymphangiosarcoma
- Malignant Giant Cell Tumor of Tendon Sheath
- Malignant Glomus Tumor (Glomangiosarcoma)

- Malignant Extrarenal Rhabdoid Tumor
- Malignant Hemangiopericytoma
- Malignant Mesenchymoma
- Neural Tumors
  - Malignant Peripheral Nerve Sheath Tumor (MPNST)
  - Malignant Triton Tumor
    - Epithelioid MPNST
    - Glandular MPNST
- Reticulum Cell Sarcoma (Lymphoma of bone)
- Skeletal Muscle Tumors
  - Ectomesenchymoma
  - Rhabdomyosarcoma
    - Alveolar Rhabdomyosarcoma
    - Botryoid Rhabdomyosarcoma
    - Embryonal Rhabdomyosarcoma
    - Pleomorphic Rhabdomyosarcoma
    - Spindle Cell Rhabdomyosarcoma
- Small Round Cell Sarcoma
  - Histiocytosis
  - Metastatic Neuroblastoma
  - Metastatic Undifferentiated Carcinoma
  - Multiple Myeloma
  - Osteomyelitis
  - Small Cell Osteosarcoma
- Smooth Muscle Tumors
  - Epithelioid Leiomyosarcoma
  - Leiomyosarcoma
- Solitary Fibrous Tumor
- Spindle Cell Hemangioendothelioma
- Synovial Sarcoma
  - Biphasic Synovial Sarcoma
  - Monophasic Synovial Sarcoma

**Spinal Cord Cancer****Spindle Cell Thyroid Cancer****Squamous Cell Cancer (Non-Skin)****Squamous Cell Lung Cancer****Squamous Cell Skin Cancer****Stem Cell Transplantation****Stomach Cancer, including:**

- Stomach Cancer, Adenocanthoma
- Stomach Cancer, Adenocarcinoma
- Stomach Cancer, Adenosquamous Carcinoma
- Stomach Cancer, Gastric Carcinoid

Stomach Cancer, Gastric Leiomyosarcoma  
Stomach Cancer, Gastric Lymphoma  
Stomach Cancer, Gastric Plasmacytoma  
Stomach Cancer, Linitis Plastica  
Stomach Cancer, Scirrhus Carcinoma  
Stomach Cancer, Signet Ring Cell  
Stomach Cancer, Mucinous Adenocarcinoma  
Stomach Cancer, Mixed adeno- and Choriocarcinoma  
Stomach Cancer, Papillary Adenocarcinoma  
Stomach Cancer, Squamous Cell Carcinoma  
Stomach Cancer with Bone Metastases

**Superficial Bladder Cancer**

**Sweat Glands Cancer**

-T-

**T-Cell Leukemia****T-Cell Lymphoma, Cutaneous****Testicular Cancer, Adenocarcinoma of the Rete Testis****Testicular Cancer, Carcinoma In Situ****Testicular Cancer, Choriocarcinoma****Testicular Cancer, Epidermoid Cyst****Testicular Cancer, Germ Cell****Testicular Cancer, Gonadoblastoma****Testicular Cancer, Granulosa Cell Tumors****Testicular Cancer, Leydig Cell Tumors****Testicular Cancer, Lymphoma****Testicular Cancer, Mesothelioma****Testicular Cancer, Metastatic Carcinoma****Testicular Cancer, Non-Seminoma:**

Choriocarcinoma

Embryonal Carcinoma

Teratoma

Immature

Mature

With Malignant Differentiation

Yolk Sac

**Testicular Cancer, Seminoma:**

Anaplastic

Atypical

Typical

**Testicular Cancer, Sarcomas****Testicular Cancer, Sertoli Cell Tumors:**

Classic

Large Cell Calcifying

Sclerosing

**Testicular Cancer, Stage I****Testicular Cancer, Stage II****Testicular Cancer, Stage III****Thalamus (Thalamic) Brain Tumor****Thymoma****Thymus Cancer, including:**

Thymic Carcinoid

Thymic Carcinoma

- Clear-Cell Carcinoma
- Lymphoepithelioma-like Carcinoma
- Mucoepidermoid Carcinoma
- Sarcomatoid
- Squamous Cell Carcinoma
- Thymolipoma
- Thymoma
  - Cortical
  - Medullary
  - Mixed

**Thyroid Cancer:**

- Papillary thyroid carcinoma with papillary renal neoplasia (PTC-RCC)
- Familial nonmedullary thyroid carcinoma (fNMTC)
- Familial thyroid tumors with cell oxyphilia (TCO)
- Papillary thyroid cancer without oxyphilia
- Familial adenomatous polyposis (FAP)
- Thyroid malignancy derived from follicular or parafollicular C cells
- Medullary thyroid carcinoma (MTC)
- Cowden disease

**Thyroid Lymphoma****Tongue Cancer****Tongue Base Cancer****Transitional Cell Cancer of Bladder****Transitional Cell Cancer of Renal Pelvis****Transitional Cell Cancer of the Ureter****Transition Cell Cancer of the Urethra****Tuberous Sclerosis (Bourneville Disease)****Tylosis**

-U-

**Unknown Primary Cancer**

**Ureter Cancer**

**Urethra Cancer:**

- Adenocarcinoma
- Clear Cell
- Melanoma
- Squamous Cell
- Transitional Cell
- Undifferentiated

**Urethra Cancer, Carcinoma of Bulbomembranous Urethra**

**Urethra Cancer, Carcinoma of Distal Urethra**

**Urethra Cancer, Carcinoma of Prostatic Urethra**

**Urethra Cancer, Carcinoma of Proximal Urethra**

**Uterine Cancer**

**Uterine Cancer, Endometrial**

**Uterine Cancer, Carcinosarcoma**

**Uterine Cancer, Leiomyosarcoma**

**Uterine Cancer, Papillary Serous**

**Uterine Cancer, Sarcoma**

**Uterine Cancer, Stage I**

**Uterine Cancer, Stage II**

**Uterine Cancer, Stage III**

**Uterine Cancer, Stage IV**

**Uterine Sarcoma**

-V-

**Vagina Cancer:**

- Adenocarcinomas
  - Adenosquamous
  - Clear Cell
  - Mucinous
  - Papillary
  - Undifferentiated
- Primary Vaginal Melanomas
- Sarcoma
  - Embryonal Rhabdomyosarcoma (Sarcoma Botryoides)
  - Endometrial Stromal Sarcoma
  - Leiomyosarcoma
  - Malignant Mixed Mullerian Tumor
- Small Cell Carcinoma
- Squamous Cell Carcinoma
  - Keratinizing
  - Nonkeratinizing
- Vaginal Intraepithelial Neoplasia
- Verrucous Carcinoma

**Vocal Cord Cancer****Vulva Cancer:**

- Adenocarcinoma
- Anaplastic Carcinomas
  - Large Immature Cells
  - Spindle Sarcomatoid Cells
  - Small Cells
- Bartholin's Gland Carcinoma
  - Adenocarcinoma
  - Adenoid Cystic Carcinoma
  - Squamous Cell Carcinoma
  - Transitional Cell Carcinoma
- Basal Cell Carcinoma
- Lichen Sclerosis
- Malignant Melanoma
- Paget's Lesions
- Primary Mammary Adenocarcinoma
- Sebaceous Carcinoma
- Squamous Cell Carcinoma



- Squamous Hyperplasia
- Verrucous Carcinoma
- Vulvar Intraepithelial Neoplasia
- Vulvar Sarcoma
  - Angiosarcoma
  - Epithelioid Sarcoma
  - Leiomyosarcoma
  - Neurofibrosarcoma
  - Rhabdomyosarcoma

-W-

Waldenstrom's Macroglobulinemia  
Warthin's Tumor  
Wilms' Tumor (Child)

-Z-

Zollinger-Ellison Syndrome

### EXAMPLES

**[0048]** Patients with inoperable hepatocellular carcinoma (HCC), no prior systemic treatment, and Child-Pugh (CP) score of A or B, received oral sorafenib at 400 mg bid continuously in 4-week cycles. Tumor response was assessed every two cycles using modified WHO criteria and independent radiologic review. Plasma samples were collected to evaluate the pharmacokinetics (PK) of sorafenib. Biomarker assays were performed in selected patients. These included phospho-ERK levels via immunohistochemistry in pretreatment biopsies, plasma HER-2 /neu analysis, plasma protein proteomics via mass spectrometry, and blood cell RNA expression patterns via Affymetrix GeneChip microarray analysis.

**[0049]** Results: Of 137 patients who were enrolled (M:F = 97:40; median age 69 years [range 28–86]), 98 (72%) had CP A and 38 (28%) CP B. Based on independent radiologic review, three (2.2%) patients achieved a partial response, eight (5.8%) achieved a minor response, and 46 (33.6%) had stable disease for at least 16 weeks as best response. Investigator-assessed median TTP was 4.2 months, and median overall survival was 9.2 months. The most common grade 3/4 drug-related toxicities which led to dose delay and/or modification were diarrhea (4.4%), hand-foot skin reaction (5.1%) and fatigue (5.8%). There were no pharmacokinetic differences between CP A and B patients. A correlation was found between pretreatment tumor phospho-ERK levels and patient response.

**What we claim:**

1. A method of treating a cancer listed in Table 1 in a subject in need thereof, comprising, administering an effective amount of sorafenib to said subject having said cancer
2. A method of claim 1, wherein said cancer is Abdominal Fibromatosis
3. A method of claim 1, wherein said cancer is acanthosis nigricans
4. A method of claim 1, wherein said cancer is Acinar Adenocarcinoma
5. A method of claim 1, wherein said cancer is Acquired ichthyosis
6. A method of claim 1, wherein said cancer is Acrokeratosis paraneoplastica
7. A method of claim 1, wherein said cancer is Actinic keratoses
8. A method of claim 1, wherein said cancer is Acute polyradiculoneuropathy
9. A method of claim 1, wherein said cancer is Adenocarcinoma
10. A method of claim 1, wherein said cancer is Adenocarcinoma Lung Cancer
11. A method of claim 1, wherein said cancer is adenocarcinoma of the colon, stomach, or pancreas
12. A method of claim 1, wherein said cancer is Adenocarcinomas - Solid Adenocarcinoma with Mucin Formation
13. A method of claim 1, wherein said cancer is Adenocystic Carcinoma
14. A method of claim 1, wherein said cancer is Adenoid Cystic Breast Cancer
15. A method of claim 1, wherein said cancer is Adenoid Cystic Carcinoma
16. A method of claim 1, wherein said cancer is Adenomatoid
17. A method of claim 1, wherein said cancer is Adenosquamous
18. A method of claim 1, wherein said cancer is Adenosquamous Carcinoma
19. A method of claim 1, wherein said cancer is Adrenal Gland Cancer - Cortical Adenoma
20. A method of claim 1, wherein said cancer is Adrenal Gland Cancer:
21. A method of claim 1, wherein said cancer is Adult Fibrosarcoma
22. A method of claim 1, wherein said cancer is Advanced Breast Cancer
23. A method of claim 1, wherein said cancer is Aggressive Breast Cancer
24. A method of claim 1, wherein said cancer is AIDS related disorders:
25. A method of claim 1, wherein said cancer is AIDS-related disorders - Kaposi's sarcoma
26. A method of claim 1, wherein said cancer is AIDS-related disorders, - lymphoma
27. A method of claim 1, wherein said cancer is Alveolar Rhabdomyosarcoma

28. A method of claim 1, wherein said cancer is Ameloblastoma
29. A method of claim 1, wherein said cancer is Anal (Anus) Cancer, including:
30. A method of claim 1, wherein said cancer is Anal Cancer - Adenocarcinomas
31. A method of claim 1, wherein said cancer is Anal Cancer - Bowen's Disease
32. A method of claim 1, wherein said cancer is Anal Cancer - Early-Stage (Superficial)
33. A method of claim 1, wherein said cancer is Anal Cancer - Intermediate-Stage I
34. A method of claim 1, wherein said cancer is Anal Cancer - Intermediate-Stage II
35. A method of claim 1, wherein said cancer is Anal Cancer - Intermediate-Stage III
36. A method of claim 1, wherein said cancer is Anal Cancer - Intraepithelial Neoplasia
37. A method of claim 1, wherein said cancer is Anal Cancer - Metastatic, Advanced-Stage IV
38. A method of claim 1, wherein said cancer is Anal Cancer - Paget's Disease
39. A method of claim 1, wherein said cancer is Anal Cancer - Small Cell Cancers
40. A method of claim 1, wherein said cancer is Anal Cancer - Squamous Cell Carcinoma
41. A method of claim 1, wherein said cancer is Anaplastic
42. A method of claim 1, wherein said cancer is Anaplastic Carcinomas
43. A method of claim 1, wherein said cancer is Angiomatoid Fibrous Histiocytoma
44. A method of claim 1, wherein said cancer is Angiosarcoma
45. A method of claim 1, wherein said cancer is Appendix Cancer (Appendiceal Cancer)
46. A method of claim 1, wherein said cancer is Ascites, Malignant
47. A method of claim 1, wherein said cancer is astleman's disease
48. A method of claim 1, wherein said cancer is Astrocytoma
49. A method of claim 1, wherein said cancer is Atypical
50. A method of claim 1, wherein said cancer is Atypical Adenomatous Hyperplasia
51. A method of claim 1, wherein said cancer is Atypical fibroxanthoma
52. A method of claim 1, wherein said cancer is Atypical Lipoma
53. A method of claim 1, wherein said cancer is Barrett's Esophagus
54. A method of claim 1, wherein said cancer is Bartholin Gland Cancer
55. A method of claim 1, wherein said cancer is Bartholin's Gland Carcinoma
56. A method of claim 1, wherein said cancer is Basal Cell Carcinoma

57. A method of claim 1, wherein said cancer is Basal Cell- nodular, nevoid, superficial, morpheaform (also termed aggressive-growth BCC or infiltrative BCC), pigmented, cystic BCC, and fibroepithelioma of Pinkus (FEP)
58. A method of claim 1, wherein said cancer is Basal Cell Skin Cancer
59. A method of claim 1, wherein said cancer is B-Cell Lymphoma
60. A method of claim 1, wherein said cancer is Bednar Tumor
61. A method of claim 1, wherein said cancer is Bilateral Breast Cancer
62. A method of claim 1, wherein said cancer is Bile Duct Cancer
63. A method of claim 1, wherein said cancer is Biphasic Synovial Sarcoma
64. A method of claim 1, wherein said cancer is Bladder Cancer - Metastases
65. A method of claim 1, wherein said cancer is Bladder Cancer - Muscle-Invasive
66. A method of claim 1, wherein said cancer is Bladder Cancer - Small Cell
67. A method of claim 1, wherein said cancer is Bladder Cancer - Superficial
68. A method of claim 1, wherein said cancer is Bladder Cancer:
69. A method of claim 1, wherein said cancer is Bone Cancer - Bone Marrow Transplantation
70. A method of claim 1, wherein said cancer is Bone Cancer - Bone Metastases
71. A method of claim 1, wherein said cancer is Bone Cancer - Chondrosarcoma
72. A method of claim 1, wherein said cancer is Bone Cancer - Chordoma
73. A method of claim 1, wherein said cancer is Bone Cancer - Ewing's Sarcoma (Child)
74. A method of claim 1, wherein said cancer is Bone Cancer - Giant Cell
75. A method of claim 1, wherein said cancer is Bone Cancer - Mesenchymal Chondrosarcoma
76. A method of claim 1, wherein said cancer is Bone Cancer - Osteosarcoma
77. A method of claim 1, wherein said cancer is Bone Cancer:
78. A method of claim 1, wherein said cancer is Borderline Ovarian Cancer
79. A method of claim 1, wherein said cancer is Botryoid Rhabdomyosarcoma
80. A method of claim 1, wherein said cancer is Bowen's Disease
81. A method of claim 1, wherein said cancer is Brain Tumors - Adult
82. A method of claim 1, wherein said cancer is Brain Tumors - Astrocytoma
83. A method of claim 1, wherein said cancer is Brain Tumors - Brainstem
84. A method of claim 1, wherein said cancer is Brain Tumors - Brainstem Glioma
85. A method of claim 1, wherein said cancer is Brain Tumors - Cavernous Sinus

86. A method of claim 1, wherein said cancer is Brain Tumors - Child
87. A method of claim 1, wherein said cancer is Brain Tumors - Chondroma
88. A method of claim 1, wherein said cancer is Brain Tumors - Ependymoma
89. A method of claim 1, wherein said cancer is Brain Tumors - Glioblastoma
90. A method of claim 1, wherein said cancer is Brain Tumors - Glioma
91. A method of claim 1, wherein said cancer is Brain Tumors - Gliomatosis
92. A method of claim 1, wherein said cancer is Brain Tumors - Hemangiopericytoma
93. A method of claim 1, wherein said cancer is Brain Tumors - Medulloblastoma
94. A method of claim 1, wherein said cancer is Brain Tumors - Oligodendroglioma
95. A method of claim 1, wherein said cancer is Brain Tumors - Pineoblastoma / Pinealoma
96. A method of claim 1, wherein said cancer is Brain Tumors - Primary Central Nervous System Lymphoma
97. A method of claim 1, wherein said cancer is Brain Tumors - Thalamic
98. A method of claim 1, wherein said cancer is Brain Tumors:
99. A method of claim 1, wherein said cancer is Breast Cancer - Adenoid Cystic
100. A method of claim 1, wherein said cancer is Breast Cancer - Advanced
101. A method of claim 1, wherein said cancer is Breast Cancer - Aggressive
102. A method of claim 1, wherein said cancer is Breast Cancer - Apocrine Carcinoma
103. A method of claim 1, wherein said cancer is Breast Cancer - Bilateral (in both breasts)
104. A method of claim 1, wherein said cancer is Breast Cancer - Breast Reconstruction
105. A method of claim 1, wherein said cancer is Breast Cancer - Comedo Type
106. A method of claim 1, wherein said cancer is Breast Cancer - Comedo Type Breast Cancer
107. A method of claim 1, wherein said cancer is Breast Cancer - Ductal Carcinoma In Situ
108. A method of claim 1, wherein said cancer is Breast Cancer - Ductal Carcinoma Invasive
109. A method of claim 1, wherein said cancer is Breast Cancer - Early Stage
110. A method of claim 1, wherein said cancer is Breast Cancer - Early Stage Breast Cancer
111. A method of claim 1, wherein said cancer is Breast Cancer - Estrogen-Negative
112. A method of claim 1, wherein said cancer is Breast Cancer - Estrogen-Negative Breast Cancer
113. A method of claim 1, wherein said cancer is Breast Cancer - High-Risk
114. A method of claim 1, wherein said cancer is Breast Cancer - in Pregnancy

115. A method of claim 1, wherein said cancer is Breast Cancer - Inflammatory
116. A method of claim 1, wherein said cancer is Breast Cancer - Inflammatory Breast Cancer
117. A method of claim 1, wherein said cancer is Breast Cancer - Invasive Breast Cancer
118. A method of claim 1, wherein said cancer is Breast Cancer - Lobular Breast Cancer
119. A method of claim 1, wherein said cancer is Breast Cancer - Lobular Carcinoma In situ (LCIS)
120. A method of claim 1, wherein said cancer is Breast Cancer - Lobular, Invasive
121. A method of claim 1, wherein said cancer is Breast Cancer - Lymphoma
122. A method of claim 1, wherein said cancer is Breast Cancer - Medullary
123. A method of claim 1, wherein said cancer is Breast Cancer - Medullary Breast Cancer
124. A method of claim 1, wherein said cancer is Breast Cancer - Metachronous Bilateral
125. A method of claim 1, wherein said cancer is Breast Cancer - Microinvasive
126. A method of claim 1, wherein said cancer is Breast Cancer - Microinvasive Breast Cancer
127. A method of claim 1, wherein said cancer is Breast Cancer - Mucinous
128. A method of claim 1, wherein said cancer is Breast Cancer - Mucinous Breast Cancer
129. A method of claim 1, wherein said cancer is Breast Cancer - Node-Negative
130. A method of claim 1, wherein said cancer is Breast Cancer - Node-Negative Breast Cancer
131. A method of claim 1, wherein said cancer is Breast Cancer - Node-Positive
132. A method of claim 1, wherein said cancer is Breast Cancer - Node-Positive Breast Cancer
133. A method of claim 1, wherein said cancer is Breast Cancer - Nonepithelial Neoplasms - Phyllodes Sarcomas
134. A method of claim 1, wherein said cancer is Breast Cancer - Nonepithelial Neoplasms - Phyllodes Tumors
135. A method of claim 1, wherein said cancer is Breast Cancer - Occult Breast Cancer with Lymphatic Metastasis
136. A method of claim 1, wherein said cancer is Breast Cancer - Occult with Lymphatic Metastasis
137. A method of claim 1, wherein said cancer is Breast Cancer - Paget's Disease of the Nipple
138. A method of claim 1, wherein said cancer is Breast Cancer - Papillary
139. A method of claim 1, wherein said cancer is Breast Cancer - Papillary Breast Cancer
140. A method of claim 1, wherein said cancer is Breast Cancer - Postmenopausal



141. A method of claim 1, wherein said cancer is Breast Cancer - Premenopausal
142. A method of claim 1, wherein said cancer is Breast Cancer - Recurrent
143. A method of claim 1, wherein said cancer is Breast Cancer - Recurrent Breast Cancer
144. A method of claim 1, wherein said cancer is Breast Cancer - Sarcoma
145. A method of claim 1, wherein said cancer is Breast Cancer - Sarcoma of the Breast
146. A method of claim 1, wherein said cancer is Breast Cancer - Secretory (juvenile)  
Carcinoma
147. A method of claim 1, wherein said cancer is Breast Cancer - Squamous
148. A method of claim 1, wherein said cancer is Breast Cancer - Squamous Cell Breast Cancer
149. A method of claim 1, wherein said cancer is Breast Cancer - Stage I
150. A method of claim 1, wherein said cancer is Breast Cancer - Stage II
151. A method of claim 1, wherein said cancer is Breast Cancer - Stage III
152. A method of claim 1, wherein said cancer is Breast Cancer - Stage IV
153. A method of claim 1, wherein said cancer is Breast Cancer - Synchronous Bilateral Breast  
Cancer
154. A method of claim 1, wherein said cancer is Breast Cancer - Tubular
155. A method of claim 1, wherein said cancer is Breast Cancer - Tubular Breast Cancer
156. A method of claim 1, wherein said cancer is Breast Cancer - Ulcerating
157. A method of claim 1, wherein said cancer is Breast Cancer - Ulcerating Breast Cancer
158. A method of claim 1, wherein said cancer is Breast Cancer with Bladder Metastases
159. A method of claim 1, wherein said cancer is Breast Cancer with Bone and Lung Metastases
160. A method of claim 1, wherein said cancer is Breast Cancer with Bone Metastases
161. A method of claim 1, wherein said cancer is Breast Cancer with Brain and Liver Metastases
162. A method of claim 1, wherein said cancer is Breast Cancer with Brain Metastases
163. A method of claim 1, wherein said cancer is Breast Cancer with Central Nervous System  
Metastases
164. A method of claim 1, wherein said cancer is Breast Cancer with Liver Metastases
165. A method of claim 1, wherein said cancer is Breast Cancer with Lung Metastases
166. A method of claim 1, wherein said cancer is Breast Cancer with Lymph Node Metastases
167. A method of claim 1, wherein said cancer is Breast Cancer with Lymphangitic Metastasis
168. A method of claim 1, wherein said cancer is Breast Cancer with Lymphatic Metastases

169. A method of claim 1, wherein said cancer is Breast Cancer with Meningeal Metastases
170. A method of claim 1, wherein said cancer is Breast Cancer with Pericardial Effusion
171. A method of claim 1, wherein said cancer is Breast Cancer with Pleura Metastases
172. A method of claim 1, wherein said cancer is Breast Cancer with Pleural Effusion
173. A method of claim 1, wherein said cancer is Breast Cancer with Skin Metastases
174. A method of claim 1, wherein said cancer is Breast Cancer with Spine Metastases
175. A method of claim 1, wherein said cancer is Breast Cancer with Stomach Metastases
176. A method of claim 1, wherein said cancer is Breast Cancer, Nonepithelial Neoplasms:
177. A method of claim 1, wherein said cancer is Breast Cancers Including:
178. A method of claim 1, wherein said cancer is Bronchial Cancer
179. A method of claim 1, wherein said cancer is Bronchioalveolar Lung Cancer
180. A method of claim 1, wherein said cancer is Burkitt's Lymphoma
181. A method of claim 1, wherein said cancer is Buttock Cancer
182. A method of claim 1, wherein said cancer is Cancer of Unknown Primary Site (CUPS)
183. A method of claim 1, wherein said cancer is Carcinoid
184. A method of claim 1, wherein said cancer is Carcinoid of the Appendix
185. A method of claim 1, wherein said cancer is Carcinoid of the Colon
186. A method of claim 1, wherein said cancer is Carcinoid of the Pancreas
187. A method of claim 1, wherein said cancer is Carcinoid of the Rectum
188. A method of claim 1, wherein said cancer is Carcinoid of the Stomach
189. A method of claim 1, wherein said cancer is Carcinoid Syndrome
190. A method of claim 1, wherein said cancer is Carcinoid Tumor
191. A method of claim 1, wherein said cancer is Carcinoid Tumors, Atypical
192. A method of claim 1, wherein said cancer is Carcinoid Tumors, Typical
193. A method of claim 1, wherein said cancer is Carcinoma Metastatic to Skin
194. A method of claim 1, wherein said cancer is Carcinoma of Unknown Primary
195. A method of claim 1, wherein said cancer is Carcinosarcoma
196. A method of claim 1, wherein said cancer is Carcinosarcoma of the Ovary
197. A method of claim 1, wherein said cancer is Carcinosarcoma of the Uterus
198. A method of claim 1, wherein said cancer is Carney's Triad
199. A method of claim 1, wherein said cancer is Cavernous Sinus Cancer

200. A method of claim 1, wherein said cancer is Cecum Cancer
201. A method of claim 1, wherein said cancer is Central Nervous System Cancers - Acoustic Neuromas (Vestibular Schwannomas)
202. A method of claim 1, wherein said cancer is Central Nervous System Cancers - Astrocytoma, e.g., WHO grade III Anaplastic Astrocytoma, and WHO grade IV
203. A method of claim 1, wherein said cancer is Central Nervous System Cancers - Astrocytomas
204. A method of claim 1, wherein said cancer is Central Nervous System Cancers - Atypical Teratoid/Rhabdoid Tumors
205. A method of claim 1, wherein said cancer is Central Nervous System Cancers - Chordoma and Chondrosarcoma
206. A method of claim 1, wherein said cancer is Central Nervous System Cancers - Choroid Plexus Papilloma and Carcinoma
207. A method of claim 1, wherein said cancer is Central Nervous System Cancers - Choroid Plexus Tumor
208. A method of claim 1, wherein said cancer is Central Nervous System Cancers - Craniopharyngioma
209. A method of claim 1, wherein said cancer is Central Nervous System Cancers - Cystic Cerebellar Astrocytomas
210. A method of claim 1, wherein said cancer is Central Nervous System Cancers - Diffuse, Fibrillary Astrocytomas - e.g., World Health Organization (WHO) Grade II
211. A method of claim 1, wherein said cancer is Central Nervous System Cancers - Ependymoblastoma
212. A method of claim 1, wherein said cancer is Central Nervous System Cancers - Ependymoma- Ellular, Papillary, Clear Cell, Tanycytic, Myxopapillary
213. A method of claim 1, wherein said cancer is Central Nervous System Cancers - Germinomas
214. A method of claim 1, wherein said cancer is Central Nervous System Cancers - Glioblastoma (GBM)
215. A method of claim 1, wherein said cancer is Central Nervous System Cancers - Gliomas - Optic, Chiasmatal, and Hypothalamic

216. A method of claim 1, wherein said cancer is Central Nervous System Cancers - Glomus Jugulare tumors (Paragangliomas)
217. A method of claim 1, wherein said cancer is Central Nervous System Cancers - Gorlin's, Turcot, and Li-Fraumeni syndromes
218. A method of claim 1, wherein said cancer is Central Nervous System Cancers - Hemangioblastomas
219. A method of claim 1, wherein said cancer is Central Nervous System Cancers - Hemangioblastomas
220. A method of claim 1, wherein said cancer is Central Nervous System Cancers - Medulloblastoma
221. A method of claim 1, wherein said cancer is Central Nervous System Cancers - Medulloepithelioma
222. A method of claim 1, wherein said cancer is Central Nervous System Cancers - Meningioma- Atypical and Malignant, Parasagittal, Falx, Olfactory Groove, Tuberculum Sellae, Sphenoid Ridge, Cerebellopontine Angle
223. A method of claim 1, wherein said cancer is Central Nervous System Cancers - Neuroblastoma
224. A method of claim 1, wherein said cancer is Central Nervous System Cancers - Neurofibromas
225. A method of claim 1, wherein said cancer is Central Nervous System Cancers - Oligoastrocytoma- Anaplastic, differentiated
226. A method of claim 1, wherein said cancer is Central Nervous System Cancers - Oligodendroglioma- Anaplastic, differentiated
227. A method of claim 1, wherein said cancer is Central Nervous System Cancers - Pilocytic Astrocytoma
228. A method of claim 1, wherein said cancer is Central Nervous System Cancers - Pineal Parenchymal Tumors
229. A method of claim 1, wherein said cancer is Central Nervous System Cancers - Pineoblastoma
230. A method of claim 1, wherein said cancer is Central Nervous System Cancers - Pituitary Adenoma

231. A method of claim 1, wherein said cancer is Central Nervous System Cancers - Pleomorphic Xanthoastrocytoma
232. A method of claim 1, wherein said cancer is Central Nervous System Cancers - Schwannoma
233. A method of claim 1, wherein said cancer is Central Nervous System Cancers - Spinal Axis Tumors
234. A method of claim 1, wherein said cancer is Central Nervous System Cancers - Subependymal Giant Cell Astrocytomas
235. A method of claim 1, wherein said cancer is Central Nervous System Cancers - Supratentorial Parenchymal tumors
236. A method of claim 1, wherein said cancer is Central Nervous System Cancers:
237. A method of claim 1, wherein said cancer is Central Nervous System Lymphoma
238. A method of claim 1, wherein said cancer is Centrocytic Lymphoma
239. A method of claim 1, wherein said cancer is Cerebral Astrocytoma
240. A method of claim 1, wherein said cancer is Cervical Cancer, Adenocarcinoma In Situ - Adenoid Basal Carcinoma
241. A method of claim 1, wherein said cancer is Cervical Cancer, Adenocarcinoma In Situ - Adenoma Malignum
242. A method of claim 1, wherein said cancer is Cervical Cancer, Adenocarcinoma In Situ - Adenosquamous Carcinoma
243. A method of claim 1, wherein said cancer is Cervical Cancer, Adenocarcinoma In Situ - Glassy Cell Carcinoma
244. A method of claim 1, wherein said cancer is Cervical Cancer, Adenocarcinoma In Situ - Papillary Serous Carcinoma
245. A method of claim 1, wherein said cancer is Cervix Cancer (Cervical Cancer), Adenocarcinoma In Situ:
246. A method of claim 1, wherein said cancer is Cervix Cancer (Cervical Cancer), Anaplastic Small Cell Carcinoma
247. A method of claim 1, wherein said cancer is Cervix Cancer (Cervical Cancer), Cervical Intraepithelial Neoplasia

248. A method of claim 1, wherein said cancer is Cervix Cancer (Cervical Cancer), Malignant Mixed Müllerian Tumors
249. A method of claim 1, wherein said cancer is Cervix Cancer (Cervical Cancer):
250. A method of claim 1, wherein said cancer is Chest Tumors (Mediastinum Tumors)
251. A method of claim 1, wherein said cancer is Chiasmal Glioma
252. A method of claim 1, wherein said cancer is Childhood Cancers
253. A method of claim 1, wherein said cancer is Chondroma, Intracranial
254. A method of claim 1, wherein said cancer is Chondrosarcoma
255. A method of claim 1, wherein said cancer is Chondrosarcoma - Central
256. A method of claim 1, wherein said cancer is Chondrosarcoma - Clear Cell
257. A method of claim 1, wherein said cancer is Chondrosarcoma - Differentiated
258. A method of claim 1, wherein said cancer is Chondrosarcoma - Mesenchymal
259. A method of claim 1, wherein said cancer is Chondrosarcoma - Peripheral
260. A method of claim 1, wherein said cancer is Chondrosarcoma:
261. A method of claim 1, wherein said cancer is Chordoma
262. A method of claim 1, wherein said cancer is Chorioadenoma Destruens
263. A method of claim 1, wherein said cancer is Choriocarcinoma
264. A method of claim 1, wherein said cancer is Choriocarcinoma, Cytotrophoblast
265. A method of claim 1, wherein said cancer is Choriocarcinoma, Syncytiotrophoblast
266. A method of claim 1, wherein said cancer is Choriocarcinoma:
267. A method of claim 1, wherein said cancer is Choroid Plexus Carcinoma
268. A method of claim 1, wherein said cancer is Choroidal Melanoma
269. A method of claim 1, wherein said cancer is Chronic Leukemia
270. A method of claim 1, wherein said cancer is Chronic Lymphocytic Leukemia (CLL)
271. A method of claim 1, wherein said cancer is Chronic Myelogenous Leukemia (CML)
272. A method of claim 1, wherein said cancer is Clear Cell
273. A method of claim 1, wherein said cancer is Clear Cell Ovarian Cancer
274. A method of claim 1, wherein said cancer is Clear Cell Sarcoma
275. A method of claim 1, wherein said cancer is Clear-Cell Carcinoma
276. A method of claim 1, wherein said cancer is CNS Lymphoma

277. A method of claim 1, wherein said cancer is Colon Cancer - Adenocarcinoma of the Colon - Mucinous (Colloid)
278. A method of claim 1, wherein said cancer is Colon Cancer - Adenocarcinoma of the Colon - Signet Ring
279. A method of claim 1, wherein said cancer is Colon Cancer - Adenomatous Polyps
280. A method of claim 1, wherein said cancer is Colon Cancer - Amine Precursor Uptake and Decarboxylation Tumor
281. A method of claim 1, wherein said cancer is Colon Cancer - Cecum
282. A method of claim 1, wherein said cancer is Colon Cancer - Hamartomatous Polyposis Syndrome
283. A method of claim 1, wherein said cancer is Colon Cancer - Hereditary Nonpolyposis Colorectal Cancer
284. A method of claim 1, wherein said cancer is Colon Cancer - Lymphoma
285. A method of claim 1, wherein said cancer is Colon Cancer - Lymphoma - B-Cell
286. A method of claim 1, wherein said cancer is Colon Cancer - Lymphoma - T-Cell
287. A method of claim 1, wherein said cancer is Colon Cancer - Mucinous
288. A method of claim 1, wherein said cancer is Colon Cancer - Neuroendocrine Carcinoma - Extrapulmonary Small Cell
289. A method of claim 1, wherein said cancer is Colon Cancer - Neuroendocrine Carcinoma - High-grade
290. A method of claim 1, wherein said cancer is Colon Cancer - Neuroendocrine Carcinoma - Oat Cell
291. A method of claim 1, wherein said cancer is Colon Cancer - Neuroendocrine Carcinoma - Well-differentiated Carcinoid
292. A method of claim 1, wherein said cancer is Colon Cancer - Polyps
293. A method of claim 1, wherein said cancer is Colon Cancer - Recurrent
294. A method of claim 1, wherein said cancer is Colon Cancer - Stage A
295. A method of claim 1, wherein said cancer is Colon Cancer - Stage B
296. A method of claim 1, wherein said cancer is Colon Cancer - Stage C
297. A method of claim 1, wherein said cancer is Colon Cancer - Stage D
298. A method of claim 1, wherein said cancer is Colon Cancer - Stage I (Dukes' A)

299. A method of claim 1, wherein said cancer is Colon Cancer - Stage II (Dukes' B)
300. A method of claim 1, wherein said cancer is Colon Cancer - Stage III (Dukes' C)
301. A method of claim 1, wherein said cancer is Colon Cancer - Stage IV
302. A method of claim 1, wherein said cancer is Colon Cancer Including:
303. A method of claim 1, wherein said cancer is Colon Cancer with Bone Metastases
304. A method of claim 1, wherein said cancer is Colon Cancer with Brain Metastases
305. A method of claim 1, wherein said cancer is Colon Cancer with Buttocks Metastases
306. A method of claim 1, wherein said cancer is Colon Cancer with Liver and Lung Metastases
307. A method of claim 1, wherein said cancer is Colon Cancer with Liver Metastases
308. A method of claim 1, wherein said cancer is Colon Cancer with Lung Metastases
309. A method of claim 1, wherein said cancer is Colon Cancer with Ovarian Metastases
310. A method of claim 1, wherein said cancer is Colon Cancer with Skin Metastases
311. A method of claim 1, wherein said cancer is Colon Cancer, Neuroendocrine Carcinoma:
312. A method of claim 1, wherein said cancer is Colorectal Cancer, Colon Cancer
313. A method of claim 1, wherein said cancer is Cortical
314. A method of claim 1, wherein said cancer is Cowden disease
315. A method of claim 1, wherein said cancer is Craniopharyngioma
316. A method of claim 1, wherein said cancer is Cutaneous paraneoplastic syndrom
317. A method of claim 1, wherein said cancer is Cutaneous T-Cell Lymphoma
318. A method of claim 1, wherein said cancer is DCIS - Ductal Carcinoma In Situ
319. A method of claim 1, wherein said cancer is Dedifferentiated Liposarcoma
320. A method of claim 1, wherein said cancer is Deep Fibromatoses
321. A method of claim 1, wherein said cancer is Dermatofibroma
322. A method of claim 1, wherein said cancer is Dermatofibrosarcoma Protuberans
323. A method of claim 1, wherein said cancer is Dermatomyositis
324. A method of claim 1, wherein said cancer is Desmoid Tumor
325. A method of claim 1, wherein said cancer is Desmoplastic trichoepithelioma
326. A method of claim 1, wherein said cancer is Desmoplastic Tumor
327. A method of claim 1, wherein said cancer is Diffuse Idiopathic Pulmonary Neuroendocrine  
Cell Hyperplasia
328. A method of claim 1, wherein said cancer is Diffuse Large B-Cell Lymphoma



329. A method of claim 1, wherein said cancer is Diffuse Lymphoma
330. A method of claim 1, wherein said cancer is Diffuse, Large-Cell Lymphoma
331. A method of claim 1, wherein said cancer is Disseminated peritoneal adenomucinosis
332. A method of claim 1, wherein said cancer is Ductal Carcinoma
333. A method of claim 1, wherein said cancer is Ductal Carcinoma in Situ (DCIS)
334. A method of claim 1, wherein said cancer is Duodenal Cancer
335. A method of claim 1, wherein said cancer is Dysgerminoma
336. A method of claim 1, wherein said cancer is Early Stage Prostate Cancer
337. A method of claim 1, wherein said cancer is Ectomesenchymoma
338. A method of claim 1, wherein said cancer is Ectopic Adrenocorticotrophic Hormone Syndrome:
339. A method of claim 1, wherein said cancer is Embryonal Carcinoma
340. A method of claim 1, wherein said cancer is Embryonal Rhabdomyosarcoma
341. A method of claim 1, wherein said cancer is Embryonal Rhabdomyosarcoma (Sarcoma Botryoides)
342. A method of claim 1, wherein said cancer is Endochodroma
343. A method of claim 1, wherein said cancer is Endocrine Cancer - Familial Non-MEN MTC (FMTC)
344. A method of claim 1, wherein said cancer is Endocrine Cancer - Follicular Adenomas
345. A method of claim 1, wherein said cancer is Endocrine Cancer - MEN 2A
346. A method of claim 1, wherein said cancer is Endocrine Cancer - MEN 2B
347. A method of claim 1, wherein said cancer is Endocrine Cancer - Multiple Endocrine Neoplasia Type 1 (MEN 1)
348. A method of claim 1, wherein said cancer is Endocrine Cancer - Multiple Endocrine Neoplasia Type 2 (MEN 2)
349. A method of claim 1, wherein said cancer is Endocrine Cancer - Papillary Thyroid Carcinoma
350. A method of claim 1, wherein said cancer is Endocrine Cancer - Sporadic MTC
351. A method of claim 1, wherein said cancer is Endocrine Cancer - Sporadic Thyroid Neoplasms
352. A method of claim 1, wherein said cancer is Endocrine Cancer:

353. A method of claim 1, wherein said cancer is Endometrial Cancer - Adenosarcoma
354. A method of claim 1, wherein said cancer is Endometrial Cancer - Epithelial Tumors
355. A method of claim 1, wherein said cancer is Endometrial Cancer - Epithelial Tumors - Clear Cell
356. A method of claim 1, wherein said cancer is Endometrial Cancer - Epithelial Tumors - Endometrioid
357. A method of claim 1, wherein said cancer is Endometrial Cancer - Epithelial Tumors - Malignant Mixed Müllerian
358. A method of claim 1, wherein said cancer is Endometrial Cancer - Epithelial Tumors - Mucinous
359. A method of claim 1, wherein said cancer is Endometrial Cancer - Epithelial Tumors - Papillary Endometrioid
360. A method of claim 1, wherein said cancer is Endometrial Cancer - Epithelial Tumors - Papillary Serous
361. A method of claim 1, wherein said cancer is Endometrial Cancer - Mesenchymal Tumors - Endometrial Stromal Sarcoma
362. A method of claim 1, wherein said cancer is Endometrial Cancer - Mesenchymal Tumors - Leiomyosarcoma
363. A method of claim 1, wherein said cancer is Endometrial Cancer - Mesenchymal Tumors:
364. A method of claim 1, wherein said cancer is Endometrial Cancer:
365. A method of claim 1, wherein said cancer is Endometrial Stromal Sarcoma
366. A method of claim 1, wherein said cancer is Ependymoma
367. A method of claim 1, wherein said cancer is Epidermoid Carcinoma
368. A method of claim 1, wherein said cancer is epithelial
369. A method of claim 1, wherein said cancer is Epithelioid Leiomyosarcoma
370. A method of claim 1, wherein said cancer is Epithelioid MPNST
371. A method of claim 1, wherein said cancer is Epithelioid Sarcoma
372. A method of claim 1, wherein said cancer is Epithelioid Sarcoma:
373. A method of claim 1, wherein said cancer is Esophagus Cancer (Esophageal Cancer) - Adenoid Cystic Carcinoma

374. A method of claim 1, wherein said cancer is Esophagus Cancer (Esophageal Cancer) - Mucoepidermoid Carcinoma
375. A method of claim 1, wherein said cancer is Esophagus Cancer (Esophageal Cancer), Including:
376. A method of claim 1, wherein said cancer is Esophagus Cancer of the Gastroesophageal Junction
377. A method of claim 1, wherein said cancer is Esthesioneuroblastoma
378. A method of claim 1, wherein said cancer is Ewing's Sarcoma
379. A method of claim 1, wherein said cancer is Extensive Stage Small Cell Lung Cancer
380. A method of claim 1, wherein said cancer is Extraabdominal Fibromatosis
381. A method of claim 1, wherein said cancer is Extrahepatic Bile Duct Cancer
382. A method of claim 1, wherein said cancer is Extraovarian Peritoneal Serous Papillary Carcinoma
383. A method of claim 1, wherein said cancer is Extraovarian Serous Carcinoma
384. A method of claim 1, wherein said cancer is Extraskkeletal Cartilaginous Tumors
385. A method of claim 1, wherein said cancer is Extraskkeletal Chondrosarcoma
386. A method of claim 1, wherein said cancer is Extraskkeletal Ewing's Sarcoma
387. A method of claim 1, wherein said cancer is Extraskkeletal Osteosarcoma
388. A method of claim 1, wherein said cancer is Eye Cancer
389. A method of claim 1, wherein said cancer is Eye Cancer, Lymphoma
390. A method of claim 1, wherein said cancer is Eye Metastases
391. A method of claim 1, wherein said cancer is Fallopian Tube Cancer - Adenocarcinomas
392. A method of claim 1, wherein said cancer is Fallopian Tube Cancer - Carcinoma
393. A method of claim 1, wherein said cancer is Fallopian Tube Cancer - Eiomysarcomas
394. A method of claim 1, wherein said cancer is Fallopian Tube Cancer - Ovarian Cancer
395. A method of claim 1, wherein said cancer is Fallopian Tube Cancer - Stage I
396. A method of claim 1, wherein said cancer is Fallopian Tube Cancer - Stage II
397. A method of claim 1, wherein said cancer is Fallopian Tube Cancer - Stage III
398. A method of claim 1, wherein said cancer is Fallopian Tube Cancer - Stage IV
399. A method of claim 1, wherein said cancer is Fallopian Tube Cancer - Transitional cell carcinomas

400. A method of claim 1, wherein said cancer is Fallopian Tube Cancer Including:
401. A method of claim 1, wherein said cancer is Familial Adenomatous Polyposis
402. A method of claim 1, wherein said cancer is Familial adenomatous polyposis (FAP)
403. A method of claim 1, wherein said cancer is Familial nonmedullary thyroid carcinoma (fNMTC)
404. A method of claim 1, wherein said cancer is Familial thyroid tumors with cell oxyphilia (TCO)
405. A method of claim 1, wherein said cancer is Fibrohistiocytic Tumors
406. A method of claim 1, wherein said cancer is Fibromatoses
407. A method of claim 1, wherein said cancer is Fibromatosis (Desmoid Tumor)
408. A method of claim 1, wherein said cancer is Fibrosarcoma
409. A method of claim 1, wherein said cancer is Fibrosarcoma - See Soft Tissue Sarcomas
410. A method of claim 1, wherein said cancer is Fibrous Histiocytoma
411. A method of claim 1, wherein said cancer is Fibrous Tumors
412. A method of claim 1, wherein said cancer is Follicular Lymphoma
413. A method of claim 1, wherein said cancer is Follicular, Small-Cleaved Cell Lymphoma
414. A method of claim 1, wherein said cancer is Foregut
415. A method of claim 1, wherein said cancer is Gallbladder Cancer - Adenocarcinoma
416. A method of claim 1, wherein said cancer is Gallbladder Cancer - Mucinous Adenocarcinoma
417. A method of claim 1, wherein said cancer is Gallbladder Cancer - Papillary Adenocarcinoma
418. A method of claim 1, wherein said cancer is Gallbladder Cancer - Sarcoma
419. A method of claim 1, wherein said cancer is Gallbladder Cancer - Squamous Cell Carcinoma
420. A method of claim 1, wherein said cancer is Gallbladder Cancer, Including:
421. A method of claim 1, wherein said cancer is Gardner's Syndrome
422. A method of claim 1, wherein said cancer is Gastric Cancer
423. A method of claim 1, wherein said cancer is Gastrinoma
424. A method of claim 1, wherein said cancer is Gastro-Esophageal (GE Junction) Cancer
425. A method of claim 1, wherein said cancer is Gastrointestinal Lymphoma

426. A method of claim 1, wherein said cancer is Gastrointestinal Stromal Tumor
427. A method of claim 1, wherein said cancer is Gastrointestinal Stromal Tumors
428. A method of claim 1, wherein said cancer is Gastrointestinal Stromal Tumors - Autonomic Nerve Tumor
429. A method of claim 1, wherein said cancer is Gastrointestinal Stromal Tumors - Leiomyoblastoma
430. A method of claim 1, wherein said cancer is Gastrointestinal Stromal Tumors - Leiomyosarcoma
431. A method of claim 1, wherein said cancer is Gastrointestinal Stromal Tumors - Pacemaker Call Tumor
432. A method of claim 1, wherein said cancer is Gastrointestinal Stromal Tumors - Plexosarcoma
433. A method of claim 1, wherein said cancer is Gastrointestinal Stromal Tumors (GST):
434. A method of claim 1, wherein said cancer is GE Junction Esophageal Cancer
435. A method of claim 1, wherein said cancer is Germ Cell Tumor - Mediastinum Tumor
436. A method of claim 1, wherein said cancer is Germ Cell Tumor - Retroperitoneal Tumor
437. A method of claim 1, wherein said cancer is Germ Cell Tumor - Undescended Testicular Cancer
438. A method of claim 1, wherein said cancer is Germ Cell Tumor:
439. A method of claim 1, wherein said cancer is Gestational Trophoblastic Disease
440. A method of claim 1, wherein said cancer is Giant Cell
441. A method of claim 1, wherein said cancer is Giant Cell Bone Tumor
442. A method of claim 1, wherein said cancer is Giant Cell Carcinoma
443. A method of claim 1, wherein said cancer is Giant Cell Fibroblastoma
444. A method of claim 1, wherein said cancer is Glandular MPNST
445. A method of claim 1, wherein said cancer is Glioblastoma
446. A method of claim 1, wherein said cancer is Glioma
447. A method of claim 1, wherein said cancer is Gliomatosis
448. A method of claim 1, wherein said cancer is Gonadal Mesothelioma
449. A method of claim 1, wherein said cancer is Gorlin's Syndrome (Nevoid Basal Cell Carcinoma Syndrome)

450. A method of claim 1, wherein said cancer is Granular Lymphocytic Lymphoma
451. A method of claim 1, wherein said cancer is Granulocytic Leukemia
452. A method of claim 1, wherein said cancer is Granulosa Cell Ovarian Cancer
453. A method of claim 1, wherein said cancer is Hairy Cell Leukemia
454. A method of claim 1, wherein said cancer is Head and Neck Cancer
455. A method of claim 1, wherein said cancer is Head and Neck Cancer, Adenoid Cystic
456. A method of claim 1, wherein said cancer is Head and Neck Cancer, Squamous Cell
457. A method of claim 1, wherein said cancer is Heavy-chain disease
458. A method of claim 1, wherein said cancer is Hemangioendothelioma
459. A method of claim 1, wherein said cancer is Hemangiopericytoma
460. A method of claim 1, wherein said cancer is Hepatocellular Carcinoma
461. A method of claim 1, wherein said cancer is High-Grade Lymphoma
462. A method of claim 1, wherein said cancer is High-Risk Breast Cancer
463. A method of claim 1, wherein said cancer is Hindgut
464. A method of claim 1, wherein said cancer is Histiocytoma, Malignant
465. A method of claim 1, wherein said cancer is Histiocytosis
466. A method of claim 1, wherein said cancer is Hodgkin's Disease
467. A method of claim 1, wherein said cancer is Hodgkin's Disease in Pregnancy
468. A method of claim 1, wherein said cancer is Hormone-Refractory Prostate Cancer
469. A method of claim 1, wherein said cancer is Hypertrichosis lanuginosa acquisita (malignant down)
470. A method of claim 1, wherein said cancer is Hypertrophic Osteoarthropathy
471. A method of claim 1, wherein said cancer is In Situ Breast Cancer
472. A method of claim 1, wherein said cancer is Indolent MyelomaPleura Cancer
473. A method of claim 1, wherein said cancer is Infantile Fibromatosis
474. A method of claim 1, wherein said cancer is Infantile Fibrosarcoma
475. A method of claim 1, wherein said cancer is Inflammatory
476. A method of claim 1, wherein said cancer is Inflammatory Fibroid Polyps
477. A method of claim 1, wherein said cancer is Inflammatory Fibrosarcoma
478. A method of claim 1, wherein said cancer is Inflammatory Liposarcoma
479. A method of claim 1, wherein said cancer is Inflammatory Myofibroblastic Tumor

480. A method of claim 1, wherein said cancer is Insulinoma
481. A method of claim 1, wherein said cancer is Intermediate-Grade Lymphoma
482. A method of claim 1, wherein said cancer is Intraabdominal Fibromatosis
483. A method of claim 1, wherein said cancer is Intralobular Acinar Carcinoma
484. A method of claim 1, wherein said cancer is Intraocular Melanoma
485. A method of claim 1, wherein said cancer is Invasive Lobular Breast Cancer
486. A method of claim 1, wherein said cancer is Islet Cell Pancreatic Cancer
487. A method of claim 1, wherein said cancer is Kaposi's Sarcoma
488. A method of claim 1, wherein said cancer is Keratinizing
489. A method of claim 1, wherein said cancer is Kidney Cancer (Renal Cell Carcinoma) - Birt-Hogg-Dubé (BHD)
490. A method of claim 1, wherein said cancer is Kidney Cancer (Renal Cell Carcinoma) - Chromophobe Renal Carcinoma
491. A method of claim 1, wherein said cancer is Kidney Cancer (Renal Cell Carcinoma) - Clear Cell Renal Carcinoma
492. A method of claim 1, wherein said cancer is Kidney Cancer (Renal Cell Carcinoma) - Hereditary Leiomyomatosis Renal Cell Carcinoma (HLRCC)
493. A method of claim 1, wherein said cancer is Kidney Cancer (Renal Cell Carcinoma) - Hereditary Papillary Renal Cell Carcinoma (HPRC)
494. A method of claim 1, wherein said cancer is Kidney Cancer (Renal Cell Carcinoma) - Onocytoma Renal Carcinoma
495. A method of claim 1, wherein said cancer is Kidney Cancer (Renal Cell Carcinoma) - Papillary Renal Carcinoma
496. A method of claim 1, wherein said cancer is Kidney Cancer (Renal Cell Carcinoma) - Papillary Renal Carcinoma, Type 1
497. A method of claim 1, wherein said cancer is Kidney Cancer (Renal Cell Carcinoma) - Papillary Renal Carcinoma, Type 2
498. A method of claim 1, wherein said cancer is Kidney Cancer (Renal Cell Carcinoma) - Von Hippel-Lindau (VHL) Clear Cell Renal Cell Carcinoma
499. A method of claim 1, wherein said cancer is Kidney Cancer (Renal Cell Carcinoma), Including:

500. A method of claim 1, wherein said cancer is Kidney Cancer with Lung Metastases
501. A method of claim 1, wherein said cancer is Krukenberg Tumor
502. A method of claim 1, wherein said cancer is Large Cell Calcifying
503. A method of claim 1, wherein said cancer is Large Cell Carcinoma - Basaloid Carcinoma
504. A method of claim 1, wherein said cancer is Large Cell Carcinoma - Clear Cell Carcinoma
505. A method of claim 1, wherein said cancer is Large Cell Carcinoma - Combined Large Cell Neuroendocrine Carcinoma
506. A method of claim 1, wherein said cancer is Large Cell Carcinoma - Large Cell Carcinoma with Rhabdoid Phenotype
507. A method of claim 1, wherein said cancer is Large Cell Carcinoma - Large Cell Neuroendocrine Carcinoma
508. A method of claim 1, wherein said cancer is Large Cell Carcinoma - Lymphoepithelioma-like Carcinoma
509. A method of claim 1, wherein said cancer is Large Cell Carcinoma:
510. A method of claim 1, wherein said cancer is Large Immature Cells
511. A method of claim 1, wherein said cancer is Large-Cell Lung Cancer
512. A method of claim 1, wherein said cancer is Large-Cell Lymphoma
513. A method of claim 1, wherein said cancer is Large-Cell, Diffuse Lymphoma
514. A method of claim 1, wherein said cancer is Larynx Cancer (Laryngeal Cancer)
515. A method of claim 1, wherein said cancer is Leiomyosarcoma
516. A method of claim 1, wherein said cancer is Leiomyosarcoma
517. A method of claim 1, wherein said cancer is Leiomyosarcoma
518. A method of claim 1, wherein said cancer is Leiomyosarcoma - Foot
519. A method of claim 1, wherein said cancer is Leiomyosarcoma - Pulmonary Artery
520. A method of claim 1, wherein said cancer is Leiomyosarcoma - Uterus
521. A method of claim 1, wherein said cancer is Leiomyosarcoma - Vena Cava
522. A method of claim 1, wherein said cancer is Leiomyosarcoma:
523. A method of claim 1, wherein said cancer is Leiomyosarcomas
524. A method of claim 1, wherein said cancer is Lentigo Maligna
525. A method of claim 1, wherein said cancer is Leukemia - Acute
526. A method of claim 1, wherein said cancer is Leukemia - Acute Lymphocytic (ALL)



527. A method of claim 1, wherein said cancer is Leukemia - Acute Megakaryoblastic leukemia
528. A method of claim 1, wherein said cancer is Leukemia - Acute Monocytic (AML)
529. A method of claim 1, wherein said cancer is Leukemia - Acute Myelogenous (AML)
530. A method of claim 1, wherein said cancer is Leukemia - Acute Myeloid (AML)
531. A method of claim 1, wherein said cancer is Leukemia - Acute Promyelocytic (APL)
532. A method of claim 1, wherein said cancer is Leukemia - B-Cell Chronic Lymphocytic Leukemia
533. A method of claim 1, wherein said cancer is Leukemia - Chronic
534. A method of claim 1, wherein said cancer is Leukemia - Chronic granulocytic leukemia
535. A method of claim 1, wherein said cancer is Leukemia - Chronic Lymphocytic (CLL)
536. A method of claim 1, wherein said cancer is Leukemia - Chronic Myelogenous
537. A method of claim 1, wherein said cancer is Leukemia - Chronic Myeloid (CML)
538. A method of claim 1, wherein said cancer is Leukemia - Chronic Myelomonocytic (CMML)
539. A method of claim 1, wherein said cancer is Leukemia - CML, Philadelphia-Negative
540. A method of claim 1, wherein said cancer is Leukemia - CMML
541. A method of claim 1, wherein said cancer is Leukemia - Cutis
542. A method of claim 1, wherein said cancer is Leukemia - Granulocytic
543. A method of claim 1, wherein said cancer is Leukemia - Granulocytic Sarcomas and Chloromas (Leukemic tumors)
544. A method of claim 1, wherein said cancer is Leukemia - Hairy Cell
545. A method of claim 1, wherein said cancer is Leukemia - Infant Acute Megakaryoblastic Leukemia
546. A method of claim 1, wherein said cancer is Leukemia - Large Granular Lymphocyte Leukemia
547. A method of claim 1, wherein said cancer is Leukemia - Lymphoblastic
548. A method of claim 1, wherein said cancer is Leukemia - Mature B-Cell Acute Lymphocytic Leukemia
549. A method of claim 1, wherein said cancer is Leukemia - Philadelphia Chromosome-Positive Acute Lymphocytic Leukemia

550. A method of claim 1, wherein said cancer is Leukemia - Precursor B-Lymphoblastic Leukemia
551. A method of claim 1, wherein said cancer is Leukemia - Prolymphocytic
552. A method of claim 1, wherein said cancer is Leukemia - Promyelocytic
553. A method of claim 1, wherein said cancer is Leukemia - Secondary Myeloid Leukemia
554. A method of claim 1, wherein said cancer is Leukemia - T-Cell
555. A method of claim 1, wherein said cancer is Leukemia:
556. A method of claim 1, wherein said cancer is Lichen Sclerosis
557. A method of claim 1, wherein said cancer is Li-Fraumeni syndrome
558. A method of claim 1, wherein said cancer is Limbic Encephalitis
559. A method of claim 1, wherein said cancer is Limited Stage Small Cell Lung Cancer
560. A method of claim 1, wherein said cancer is Linitis Plastica
561. A method of claim 1, wherein said cancer is Lip Cancer
562. A method of claim 1, wherein said cancer is Lipoma-like Liposarcoma
563. A method of claim 1, wherein said cancer is Lipomatous Tumors
564. A method of claim 1, wherein said cancer is Liposarcoma
565. A method of claim 1, wherein said cancer is Liver Cancer - Angiosarcoma
566. A method of claim 1, wherein said cancer is Liver Cancer - Cholangiocarcinoma (Bile Duct Cancer) - Distal
567. A method of claim 1, wherein said cancer is Liver Cancer - Cholangiocarcinoma (Bile Duct Cancer) - Hilar (Klatskin's Tumors)
568. A method of claim 1, wherein said cancer is Liver Cancer - Cholangiocarcinoma (Bile Duct Cancer) - Intrahepatic
569. A method of claim 1, wherein said cancer is Liver Cancer - Cholangiocarcinoma (Bile Duct Cancer).
570. A method of claim 1, wherein said cancer is Liver Cancer - Cholangiocellular Carcinoma
571. A method of claim 1, wherein said cancer is Liver Cancer - Emangioendotheliomas
572. A method of claim 1, wherein said cancer is Liver Cancer - Epithelioid Hemangioendothelioma
573. A method of claim 1, wherein said cancer is Liver Cancer - Fibrosarcoma
574. A method of claim 1, wherein said cancer is Liver Cancer - Hemangioendothelioma

575. A method of claim 1, wherein said cancer is Liver Cancer - Hemangiosarcoma
576. A method of claim 1, wherein said cancer is Liver Cancer - Hepatic Cystadenocarcinoma
577. A method of claim 1, wherein said cancer is Liver Cancer - Hepatoblastoma
578. A method of claim 1, wherein said cancer is Liver Cancer - Hepatocellular Carcinoma  
(Liver Cell Carcinoma) - Carcinosarcoma
579. A method of claim 1, wherein said cancer is Liver Cancer - Hepatocellular Carcinoma  
(Liver Cell Carcinoma) - Childhood
580. A method of claim 1, wherein said cancer is Liver Cancer - Hepatocellular Carcinoma  
(Liver Cell Carcinoma) - Clear Cell
581. A method of claim 1, wherein said cancer is Liver Cancer - Hepatocellular Carcinoma  
(Liver Cell Carcinoma) - Combined
582. A method of claim 1, wherein said cancer is Liver Cancer - Hepatocellular Carcinoma  
(Liver Cell Carcinoma) - Fibrolamellar
583. A method of claim 1, wherein said cancer is Liver Cancer - Hepatocellular Carcinoma  
(Liver Cell Carcinoma) - Giant Cell
584. A method of claim 1, wherein said cancer is Liver Cancer - Hepatocellular Carcinoma  
(Liver Cell Carcinoma) - Sclerosing, Hepatoblastoma
585. A method of claim 1, wherein said cancer is Liver Cancer - Hepatocellular Carcinoma  
(Liver Cell Carcinoma) - Spindle Cell
586. A method of claim 1, wherein said cancer is Liver Cancer - Hepatocellular Carcinoma  
(Liver Cell Carcinoma):
587. A method of claim 1, wherein said cancer is Liver Cancer - Histiocytoma
588. A method of claim 1, wherein said cancer is Liver Cancer - Leiomyosarcoma
589. A method of claim 1, wherein said cancer is Liver Cancer - Lymphoma
590. A method of claim 1, wherein said cancer is Liver Cancer - Malignant Fibrous
591. A method of claim 1, wherein said cancer is Liver Cancer - Malignant Schwannoma
592. A method of claim 1, wherein said cancer is Liver Cancer - Mesenchymal sarcoma
593. A method of claim 1, wherein said cancer is Liver Cancer - Metastases
594. A method of claim 1, wherein said cancer is Liver Cancer - Mixed Hepatocellular  
Cholangiocarcinoma
595. A method of claim 1, wherein said cancer is Liver Cancer - Osteosacoma

596. A method of claim 1, wherein said cancer is Liver Cancer - Recurrent Liver Cancer
597. A method of claim 1, wherein said cancer is Liver Cancer - Rhabdomyosarcoma
598. A method of claim 1, wherein said cancer is Liver Cancer - Stage I
599. A method of claim 1, wherein said cancer is Liver Cancer - Stage II
600. A method of claim 1, wherein said cancer is Liver Cancer - Stage III
601. A method of claim 1, wherein said cancer is Liver Cancer - Stage IV
602. A method of claim 1, wherein said cancer is Liver Cancer - Undifferentiated Liver Cancer
603. A method of claim 1, wherein said cancer is Liver Cancer Including:
604. A method of claim 1, wherein said cancer is Lobular Carcinoma in Situ (LCIS)
605. A method of claim 1, wherein said cancer is Lobular Hyperplasia
606. A method of claim 1, wherein said cancer is localized fibrous mesothelioma
607. A method of claim 1, wherein said cancer is Low-Grade Lymphoma
608. A method of claim 1, wherein said cancer is Lung Cancer - Adenocarcinoma
609. A method of claim 1, wherein said cancer is Lung Cancer - Adenocarcinomas - Acinar
610. A method of claim 1, wherein said cancer is Lung Cancer - Adenocarcinomas - Clear Cell  
Adenocarcinoma
611. A method of claim 1, wherein said cancer is Lung Cancer - Adenocarcinomas - Mucinous  
(Colloid) Adenocarcinoma
612. A method of claim 1, wherein said cancer is Lung Cancer - Adenocarcinomas - Mucinous  
Cystadenocarcinoma
613. A method of claim 1, wherein said cancer is Lung Cancer - Adenocarcinomas - Papillary
614. A method of claim 1, wherein said cancer is Lung Cancer - Adenocarcinomas - Signet-Ring  
Adenocarcinoma
615. A method of claim 1, wherein said cancer is Lung Cancer - Adenocarcinomas - Well-  
differentiated Fetal Adenocarcinoma
616. A method of claim 1, wherein said cancer is Lung Cancer - Adenocarcinomas,  
Bronchioloalveolar Carcinoma
617. A method of claim 1, wherein said cancer is Lung Cancer - Adenocarcinomas,  
Bronchioloalveolar Carcinoma, Mixed Mucinous and Nonmucinous/Indeterminate cell  
type

618. A method of claim 1, wherein said cancer is Lung Cancer - Adenocarcinomas, Bronchioloalveolar Carcinoma, Mucinous (Goblet Cell) type
619. A method of claim 1, wherein said cancer is Lung Cancer - Adenocarcinomas, Bronchioloalveolar Carcinoma, Nonmucinous (Clara Cell/type II Pneumocyte Type)
620. A method of claim 1, wherein said cancer is Lung Cancer - Adenocarcinomas:
621. A method of claim 1, wherein said cancer is Lung Cancer - Bronchioalveolar
622. A method of claim 1, wherein said cancer is Lung Cancer - Cystic Mucinous
623. A method of claim 1, wherein said cancer is Lung Cancer - Extrapulmonary Small Cell Anaplastic Carcinoma - Extensive
624. A method of claim 1, wherein said cancer is Lung Cancer - Extrapulmonary Small Cell Anaplastic Carcinoma - Limited
625. A method of claim 1, wherein said cancer is Lung Cancer - Germ Cell
626. A method of claim 1, wherein said cancer is Lung Cancer - Giant Cell
627. A method of claim 1, wherein said cancer is Lung Cancer - Large-Cell
628. A method of claim 1, wherein said cancer is Lung Cancer - Mucinous
629. A method of claim 1, wherein said cancer is Lung Cancer - Non-Small Cell Lung Cancer - (NSCLC)
630. A method of claim 1, wherein said cancer is Lung Cancer - Non-Small Cell Lung Cancer - Including:
631. A method of claim 1, wherein said cancer is Lung Cancer - Non-Small Cell Lung Cancer - Recurrent
632. A method of claim 1, wherein said cancer is Lung Cancer - Non-Small Cell Lung Cancer - Stage I
633. A method of claim 1, wherein said cancer is Lung Cancer - Non-Small Cell Lung Cancer - Stage IIA
634. A method of claim 1, wherein said cancer is Lung Cancer - Non-Small Cell Lung Cancer - Stage IIB
635. A method of claim 1, wherein said cancer is Lung Cancer - Non-Small Cell Lung Cancer - Stage IIIA
636. A method of claim 1, wherein said cancer is Lung Cancer - Non-Small Cell Lung Cancer - Stage IIIB

637. A method of claim 1, wherein said cancer is Lung Cancer - Non-Small Cell Lung Cancer - Stage IV
638. A method of claim 1, wherein said cancer is Lung Cancer - Non-Small Cell Lung Cancer with Bone Metastases
639. A method of claim 1, wherein said cancer is Lung Cancer - Non-Small Cell Lung Cancer with Brain Metastases
640. A method of claim 1, wherein said cancer is Lung Cancer - Non-Small Cell Lung Cancer with Liver Metastases
641. A method of claim 1, wherein said cancer is Lung Cancer - Non-Small Cell Lung Cancer with Lymph Node Metastases
642. A method of claim 1, wherein said cancer is Lung Cancer - Non-Small Cell Lung Cancer with Skin Metastases
643. A method of claim 1, wherein said cancer is Lung Cancer - Small Cell - Combined small cell carcinoma
644. A method of claim 1, wherein said cancer is Lung Cancer - Small Cell - Extensive Stage
645. A method of claim 1, wherein said cancer is Lung Cancer - Small Cell - Limited Stage
646. A method of claim 1, wherein said cancer is Lung Cancer - Small Cell - Mixed small cell/large cell carcinoma
647. A method of claim 1, wherein said cancer is Lung Cancer - Small Cell - Pure small cell
648. A method of claim 1, wherein said cancer is Lung Cancer - Small Cell with Brain Metastases
649. A method of claim 1, wherein said cancer is Lung Cancer with Adrenal Gland Metastases
650. A method of claim 1, wherein said cancer is Lung Cancer with Bone Metastases
651. A method of claim 1, wherein said cancer is Lung Cancer with Brain Metastases
652. A method of claim 1, wherein said cancer is Lung Cancer with Liver Metastases
653. A method of claim 1, wherein said cancer is Lung Cancer with Lymph Node Metastases
654. A method of claim 1, wherein said cancer is Lung Cancer with Ovarian Metastases
655. A method of claim 1, wherein said cancer is Lung Cancer with Skin Metastases
656. A method of claim 1, wherein said cancer is Lung Cancer, Recurrent
657. A method of claim 1, wherein said cancer is Lung Cancer, Small Cell:
658. A method of claim 1, wherein said cancer is Lung Cancer, Squamous

659. A method of claim 1, wherein said cancer is Lung Cancer, Squamous Dysplasia/Carcinoma in situ
660. A method of claim 1, wherein said cancer is Lung Cancer, Stage I
661. A method of claim 1, wherein said cancer is Lung Cancer, Stage II
662. A method of claim 1, wherein said cancer is Lung Cancer, Stage III
663. A method of claim 1, wherein said cancer is Lung Cancer, Stage IIIA
664. A method of claim 1, wherein said cancer is Lung Cancer, Stage IIIB
665. A method of claim 1, wherein said cancer is Lung Cancer, Stage IV
666. A method of claim 1, wherein said cancer is Lung Cancer, Superior Sulcus Tumors (Pancoast tumors)
667. A method of claim 1, wherein said cancer is Lung Cancer, Unclassified
668. A method of claim 1, wherein said cancer is Lung Cancer:
669. A method of claim 1, wherein said cancer is Lung Metastases
670. A method of claim 1, wherein said cancer is Lymph Node Excision
671. A method of claim 1, wherein said cancer is Lymph Node Metastases
672. A method of claim 1, wherein said cancer is Lymphangiosarcoma
673. A method of claim 1, wherein said cancer is Lymphangitic Metastasis
674. A method of claim 1, wherein said cancer is Lymphoblastic Leukemia
675. A method of claim 1, wherein said cancer is Lymphoblastic Lymphoma
676. A method of claim 1, wherein said cancer is Lymphocytic Lymphoma
677. A method of claim 1, wherein said cancer is Lymphoepithelioma-like Carcinoma
678. A method of claim 1, wherein said cancer is Lymphoma
679. A method of claim 1, wherein said cancer is Lymphoma - AIDS Related
680. A method of claim 1, wherein said cancer is Lymphoma - Anaplastic
681. A method of claim 1, wherein said cancer is Lymphoma - Anaplastic Large Cell (ALCL)
682. A method of claim 1, wherein said cancer is Lymphoma - B-Cell
683. A method of claim 1, wherein said cancer is Lymphoma - B-Cell Large Diffuse
684. A method of claim 1, wherein said cancer is Lymphoma - B-Cell Large- Lymphomatoid Granulomatosis Type
685. A method of claim 1, wherein said cancer is Lymphoma - B-Cell Monocytoid
686. A method of claim 1, wherein said cancer is Lymphoma - Breast

687. A method of claim 1, wherein said cancer is Lymphoma - CD30+ Large T-cell Lymphoma
688. A method of claim 1, wherein said cancer is Lymphoma - CD56+ Nasal-Type NK/T-Cell Lymphoma
689. A method of claim 1, wherein said cancer is Lymphoma - Central Nervous System
690. A method of claim 1, wherein said cancer is Lymphoma - Cutaneous T-Cell - Mycosis Fungoides, Agetoid Reticulosis or Woringer-Kolopp disease
691. A method of claim 1, wherein said cancer is Lymphoma - Cutaneous T-Cell:
692. A method of claim 1, wherein said cancer is Lymphoma - Diffuse
693. A method of claim 1, wherein said cancer is Lymphoma - Diffuse, Large-Cell
694. A method of claim 1, wherein said cancer is Lymphoma - Enteropathy-Type T-Cell Lymphoma
695. A method of claim 1, wherein said cancer is Lymphoma - Eye
696. A method of claim 1, wherein said cancer is Lymphoma - Follicular
697. A method of claim 1, wherein said cancer is Lymphoma - Follicular, Small-Cleaved Cell
698. A method of claim 1, wherein said cancer is Lymphoma - Gastrointestinal
699. A method of claim 1, wherein said cancer is Lymphoma - Granular, Lymphocytic
700. A method of claim 1, wherein said cancer is Lymphoma - Granulomatous slack skin - Cutaneous
701. A method of claim 1, wherein said cancer is Lymphoma - Granulomatous slack skin - Lymphomatoid
702. A method of claim 1, wherein said cancer is Lymphoma - Granulomatous slack skin - Papulosis
703. A method of claim 1, wherein said cancer is Lymphoma - Granulomatous slack skin - Primary
704. A method of claim 1, wherein said cancer is Lymphoma - Hepatosplenic T-Cell Lymphoma
705. A method of claim 1, wherein said cancer is Lymphoma - High-Grade
706. A method of claim 1, wherein said cancer is Lymphoma - Hodgkin's Disease - Granuloma
707. A method of claim 1, wherein said cancer is Lymphoma - Hodgkin's disease - Lymphocyte-Depleted Hodgkin's Lymphoma
708. A method of claim 1, wherein said cancer is Lymphoma - Hodgkin's disease - Lymphocyte-Predominant Hodgkin's Lymphoma



709. A method of claim 1, wherein said cancer is Lymphoma - Hodgkin's disease - Lymphocyte-Rich Classic Hodgkin's Lymphoma
710. A method of claim 1, wherein said cancer is Lymphoma - Hodgkin's disease - Mixed-Cellularity Hodgkin's Lymphoma
711. A method of claim 1, wherein said cancer is Lymphoma - Hodgkin's Disease - Nodular Lymphocyte-Predominant Hodgkin's Lymphoma
712. A method of claim 1, wherein said cancer is Lymphoma - Hodgkin's Disease - Nodular Lymphocyte-Predominant Hodgkin's Lymphoma
713. A method of claim 1, wherein said cancer is Lymphoma - Hodgkin's disease - Nodular Sclerosis Hodgkin's Lymphoma
714. A method of claim 1, wherein said cancer is Lymphoma - Hodgkin's Disease - Paragranuloma
715. A method of claim 1, wherein said cancer is Lymphoma - Hodgkin's Disease - Sarcoma
716. A method of claim 1, wherein said cancer is Lymphoma - Hodgkin's disease, Intravascular Large B-Cell Lymphoma
717. A method of claim 1, wherein said cancer is Lymphoma - Hodgkin's disease, Low-Grade B-Cell Lymphoma of Mucosa-Associated Lymphoid Tissue
718. A method of claim 1, wherein said cancer is Lymphoma - Hodgkin's disease, Lymphoplasmacytic lymphoma
719. A method of claim 1, wherein said cancer is Lymphoma - Hodgkin's Disease:
720. A method of claim 1, wherein said cancer is Lymphoma - Intermediate Grade
721. A method of claim 1, wherein said cancer is Lymphoma - Large-Cell
722. A method of claim 1, wherein said cancer is Lymphoma - Large-Cell, Diffuse
723. A method of claim 1, wherein said cancer is Lymphoma - Low-Grade
724. A method of claim 1, wherein said cancer is Lymphoma - Lymphoblastic Lymphoma
725. A method of claim 1, wherein said cancer is Lymphoma - Lymphocytic Lymphoma
726. A method of claim 1, wherein said cancer is Lymphoma - Lymphocytic, Large Granular
727. A method of claim 1, wherein said cancer is Lymphoma - Lymphocytic, Small
728. A method of claim 1, wherein said cancer is Lymphoma - MALT
729. A method of claim 1, wherein said cancer is Lymphoma - Mantle Cell

730. A method of claim 1, wherein said cancer is Lymphoma - Non-Hodgkin's - Burkitt's & Atypical Burkitt's
731. A method of claim 1, wherein said cancer is Lymphoma - Non-Hodgkin's - Cutaneous T-cell
732. A method of claim 1, wherein said cancer is Lymphoma - Non-Hodgkin's - Diffuse
733. A method of claim 1, wherein said cancer is Lymphoma - Non-Hodgkin's - High Grade
734. A method of claim 1, wherein said cancer is Lymphoma - Non-Hodgkin's - Immunoblastic Diffuse
735. A method of claim 1, wherein said cancer is Lymphoma - Non-Hodgkin's - Intermediate Grade
736. A method of claim 1, wherein said cancer is Lymphoma - Non-Hodgkin's - Intermediately Differentiated Diffuse
737. A method of claim 1, wherein said cancer is Lymphoma - Non-Hodgkin's - Large Cell Follicular
738. A method of claim 1, wherein said cancer is Lymphoma - Non-Hodgkin's - Low Grade
739. A method of claim 1, wherein said cancer is Lymphoma - Non-Hodgkin's - Mixed Cell Diffuse
740. A method of claim 1, wherein said cancer is Lymphoma - Non-Hodgkin's - Mixed Follicular
741. A method of claim 1, wherein said cancer is Lymphoma - Non-Hodgkin's - Non-Burkitt's
742. A method of claim 1, wherein said cancer is Lymphoma - Non-Hodgkin's - Small Cleaved Cell Diffuse,
743. A method of claim 1, wherein said cancer is Lymphoma - Non-Hodgkin's - Small Cleaved Cell Follicular
744. A method of claim 1, wherein said cancer is Lymphoma - Non-Hodgkin's - Small Lymphocytic
745. A method of claim 1, wherein said cancer is Lymphoma - Non-Hodgkin's - T-Cell, Cutaneous
746. A method of claim 1, wherein said cancer is Lymphoma - Non-Hodgkin's, Including:
747. A method of claim 1, wherein said cancer is Lymphoma, Granulomatous slack skin:
748. A method of claim 1, wherein said cancer is Lymphoma, Orbital

749. A method of claim 1, wherein said cancer is Lymphoma, Peripheral T-Cell
750. A method of claim 1, wherein said cancer is Lymphoma, Primary Central Nervous System
751. A method of claim 1, wherein said cancer is Lymphoma, Small Cleaved Cell
752. A method of claim 1, wherein said cancer is Lymphoma, Soft tissue
753. A method of claim 1, wherein said cancer is Lymphoma, T-Cell
754. A method of claim 1, wherein said cancer is Lymphoma, T-Cell, Cutaneous
755. A method of claim 1, wherein said cancer is Lymphoma, Thyroid
756. A method of claim 1, wherein said cancer is Lymphoma:
757. A method of claim 1, wherein said cancer is Malignant Ascites
758. A method of claim 1, wherein said cancer is Malignant Carcinoid Syndrome - Atypical
759. A method of claim 1, wherein said cancer is Malignant Carcinoid Syndrome - Typical
760. A method of claim 1, wherein said cancer is Malignant Carcinoid Syndrome:
761. A method of claim 1, wherein said cancer is Malignant Extrarenal Rhabdoid Tumor
762. A method of claim 1, wherein said cancer is Malignant Fibrous Histiocytoma
763. A method of claim 1, wherein said cancer is Malignant Fibrous Histiocytoma
764. A method of claim 1, wherein said cancer is Malignant Fibrous Histiocytoma
765. A method of claim 1, wherein said cancer is Malignant Giant Cell Tumor of Tendon Sheath
766. A method of claim 1, wherein said cancer is Malignant Glomus Tumor  
(Glomangiosarcoma)
767. A method of claim 1, wherein said cancer is Malignant Hemangiopericytoma
768. A method of claim 1, wherein said cancer is Malignant Hemangiopericytoma
769. A method of claim 1, wherein said cancer is Malignant Melanoma
770. A method of claim 1, wherein said cancer is Malignant Mesenchymal Tumors
771. A method of claim 1, wherein said cancer is Malignant Mesenchymoma
772. A method of claim 1, wherein said cancer is Malignant Mixed Mullerian Tumor
773. A method of claim 1, wherein said cancer is Malignant Peripheral Nerve Sheath Tumor
774. A method of claim 1, wherein said cancer is Malignant Peripheral Nerve Sheath Tumor  
(MPNST)
775. A method of claim 1, wherein said cancer is Malignant Pleural Effusion
776. A method of claim 1, wherein said cancer is Malignant Pleural Mesothelioma
777. A method of claim 1, wherein said cancer is Malignant Schwannoma

778. A method of claim 1, wherein said cancer is Malignant Triton Tumor
779. A method of claim 1, wherein said cancer is MALT Lymphoma
780. A method of claim 1, wherein said cancer is Mantle Cell Lymphoma
781. A method of claim 1, wherein said cancer is Mature
782. A method of claim 1, wherein said cancer is Mediastinal Neoplasms - Chemodectoma  
(Paraganglioma)
783. A method of claim 1, wherein said cancer is Mediastinal Neoplasms - Choriocarcinoma
784. A method of claim 1, wherein said cancer is Mediastinal Neoplasms - Endodermal Sinus  
Tumors (Yolk Sac Tumors)
785. A method of claim 1, wherein said cancer is Mediastinal Neoplasms - Fibroelastoma
786. A method of claim 1, wherein said cancer is Mediastinal Neoplasms - Fibroma
787. A method of claim 1, wherein said cancer is Mediastinal Neoplasms - Fibrosarcoma
788. A method of claim 1, wherein said cancer is Mediastinal Neoplasms -  
Ganglioneuroblastoma
789. A method of claim 1, wherein said cancer is Mediastinal Neoplasms - Ganglioneuroma
790. A method of claim 1, wherein said cancer is Mediastinal Neoplasms - Granular Cell  
Myoblastomas
791. A method of claim 1, wherein said cancer is Mediastinal Neoplasms -  
Hemangioendothelioma
792. A method of claim 1, wherein said cancer is Mediastinal Neoplasms - Hemangioma
793. A method of claim 1, wherein said cancer is Mediastinal Neoplasms, Histiocytic  
Lymphoma
794. A method of claim 1, wherein said cancer is Mediastinal Neoplasms, Immature Teratomas
795. A method of claim 1, wherein said cancer is Mediastinal Neoplasms, including:
796. A method of claim 1, wherein said cancer is Mediastinal Neoplasms, Leiomyoma
797. A method of claim 1, wherein said cancer is Mediastinal Neoplasms, Leiomyosarcoma
798. A method of claim 1, wherein said cancer is Mediastinal Neoplasms, Lipoma
799. A method of claim 1, wherein said cancer is Mediastinal Neoplasms, Liposarcoma
800. A method of claim 1, wherein said cancer is Mediastinal Neoplasms, Lymphangioma
801. A method of claim 1, wherein said cancer is Mediastinal Neoplasms, Lymphangiomyoma

802. A method of claim 1, wherein said cancer is Mediastinal Neoplasms, Malignant Fibrous Histiocytoma
803. A method of claim 1, wherein said cancer is Mediastinal Neoplasms, Mesenchymoma
804. A method of claim 1, wherein said cancer is Mediastinal Neoplasms, Mixed Embryonal Cell Carcinoma,
805. A method of claim 1, wherein said cancer is Mediastinal Neoplasms, Mixed Embryonal Cell Carcinoma, with Endodermal Sinus Elements
806. A method of claim 1, wherein said cancer is Mediastinal Neoplasms, Mixed Embryonal Cell Carcinoma, with Seminomatous Elements
807. A method of claim 1, wherein said cancer is Mediastinal Neoplasms, Mixed Embryonal Cell Carcinoma, with Tetroid Elements
808. A method of claim 1, wherein said cancer is Mediastinal Neoplasms, Mixed Embryonal Cell Carcinoma, with Trophoblastic Elements
809. A method of claim 1, wherein said cancer is Mediastinal Neoplasms, Myxoma
810. A method of claim 1, wherein said cancer is Mediastinal Neoplasms, Neuroblastoma
811. A method of claim 1, wherein said cancer is Mediastinal Neoplasms, Neurofibroma
812. A method of claim 1, wherein said cancer is Mediastinal Neoplasms, Neuroilemoma (schwannoma)
813. A method of claim 1, wherein said cancer is Mediastinal Neoplasms, Neurosarcoma
814. A method of claim 1, wherein said cancer is Mediastinal Neoplasms, Nonseminomatous
815. A method of claim 1, wherein said cancer is Mediastinal Neoplasms, Permeative Neuroectodermal Tumor
816. A method of claim 1, wherein said cancer is Mediastinal Neoplasms, Pheochromocytoma
817. A method of claim 1, wherein said cancer is Mediastinal Neoplasms, Pure Embryonal Cell Carcinoma
818. A method of claim 1, wherein said cancer is Mediastinal Neoplasms, Rhabdomyosarcoma
819. A method of claim 1, wherein said cancer is Mediastinal Neoplasms, Seminoma
820. A method of claim 1, wherein said cancer is Mediastinal Neoplasms, Xanthogranuloma
821. A method of claim 1, wherein said cancer is Medulary Thyroid Carcinoma
822. A method of claim 1, wherein said cancer is Medullary
823. A method of claim 1, wherein said cancer is Medullary thyroid carcinoma (MTC)

824. A method of claim 1, wherein said cancer is Medulloblastoma
825. A method of claim 1, wherein said cancer is Melanoma
826. A method of claim 1, wherein said cancer is Melanomas including:
827. A method of claim 1, wherein said cancer is Melanomas, Amelanotic melanoma
828. A method of claim 1, wherein said cancer is Melanomas, Cutaneous
829. A method of claim 1, wherein said cancer is Melanomas, Extraocular Extension
830. A method of claim 1, wherein said cancer is Melanomas, Intraocular
831. A method of claim 1, wherein said cancer is Melanomas, Melanoma-associated retinopathy
832. A method of claim 1, wherein said cancer is Melanomas, Multiple Choroidal Malignant Melanoma
833. A method of claim 1, wherein said cancer is Melanomas, Soft Tissue
834. A method of claim 1, wherein said cancer is Melanomas, Uveal-spindle cell (A, B, or both), mixed cell, epithelioid cell
835. A method of claim 1, wherein said cancer is Melanomas, with Brain Metastases
836. A method of claim 1, wherein said cancer is Melanomas, with Liver Metastases
837. A method of claim 1, wherein said cancer is Melanomas, with Lung Metastases
838. A method of claim 1, wherein said cancer is Melanosis
839. A method of claim 1, wherein said cancer is Meningeal Cancer
840. A method of claim 1, wherein said cancer is Meningeal Metastases
841. A method of claim 1, wherein said cancer is Meningioma
842. A method of claim 1, wherein said cancer is Merkel Cell
843. A method of claim 1, wherein said cancer is Merkel Cell Carcinoma
844. A method of claim 1, wherein said cancer is Merkel Cell Skin Cancer
845. A method of claim 1, wherein said cancer is Mesenchymal Chondrosarcoma
846. A method of claim 1, wherein said cancer is Mesenchymal Chondrosarcoma
847. A method of claim 1, wherein said cancer is Mesenteric Fibromatosis
848. A method of claim 1, wherein said cancer is Mesothelioma, Biphasic
849. A method of claim 1, wherein said cancer is Mesothelioma, Epithelial
850. A method of claim 1, wherein said cancer is Mesothelioma, Poorly Differentiated
851. A method of claim 1, wherein said cancer is Mesothelioma, Sarcomatoid
852. A method of claim 1, wherein said cancer is Mesothelioma:

853. A method of claim 1, wherein said cancer is Metastatic carcinoma of unknown primary site, Metastatic gestational Choriocarcinoma
854. A method of claim 1, wherein said cancer is Metastatic carcinoma of unknown primary site, poorly differentiated carcinoma (with or without features of adenocarcinoma
855. A method of claim 1, wherein said cancer is Metastatic carcinoma of unknown primary site, poorly differentiated neoplasm
856. A method of claim 1, wherein said cancer is Metastatic carcinoma of unknown primary site, well-differentiated and moderately well-differentiated adenocarcinoma
857. A method of claim 1, wherein said cancer is Metastatic carcinoma of unknown primary site:
858. A method of claim 1, wherein said cancer is Metastatic Melanoma
859. A method of claim 1, wherein said cancer is Metastatic Neuroblastoma
860. A method of claim 1, wherein said cancer is Metastatic Undifferentiated Carcinoma
861. A method of claim 1, wherein said cancer is Microcystic adrexal carcinoma
862. A method of claim 1, wherein said cancer is Midgut
863. A method of claim 1, wherein said cancer is Mixed
864. A method of claim 1, wherein said cancer is mixed (elements of both epithelial and sarcomatoid
865. A method of claim 1, wherein said cancer is Mixed Mullerian Tumor
866. A method of claim 1, wherein said cancer is monoclonal gammopathy of unknown significance (MGUS)
867. A method of claim 1, wherein said cancer is Monophasic Synovial Sarcoma
868. A method of claim 1, wherein said cancer is Mucinous
869. A method of claim 1, wherein said cancer is mucinous adenocarcinoma of the appendix and colon
870. A method of claim 1, wherein said cancer is Mucinous Carcinoma
871. A method of claim 1, wherein said cancer is Mucinous Carcinoma
872. A method of claim 1, wherein said cancer is Mucoepidermoid carcinoma
873. A method of claim 1, wherein said cancer is Mucoepidermoid Carcinoma
874. A method of claim 1, wherein said cancer is Mucosal-Associated Lymphoid Tissue Lymphoma
875. A method of claim 1, wherein said cancer is Muir-Torre syndrome

876. A method of claim 1, wherein said cancer is Multicentric reticulohistiocytosis
877. A method of claim 1, wherein said cancer is multicystic and well-differentiated papillary peritoneal mesotheliomas
878. A method of claim 1, wherein said cancer is Multiple Focal Peritoneal Papillary Carcinoma
879. A method of claim 1, wherein said cancer is Multiple Myeloma
880. A method of claim 1, wherein said cancer is multiple myeloma (MM)
881. A method of claim 1, wherein said cancer is Muscle-Invasive Bladder Tumor
882. A method of claim 1, wherein said cancer is Mycosis Fungoides
883. A method of claim 1, wherein said cancer is Myeloblastomas (chloromas or granulocytic sarcomas)
884. A method of claim 1, wherein said cancer is Myelodysplasia
885. A method of claim 1, wherein said cancer is Myelodysplastic Syndrome
886. A method of claim 1, wherein said cancer is Myelodysplastic syndromes (MDS), 5q-syndrome
887. A method of claim 1, wherein said cancer is Myelodysplastic syndromes (MDS), hypocellular MDS
888. A method of claim 1, wherein said cancer is Myelodysplastic Syndromes (MDS), hypoplastic
889. A method of claim 1, wherein said cancer is Myelodysplastic syndromes (MDS), preleukemia, or smoldering leukemia
890. A method of claim 1, wherein said cancer is Myelodysplastic syndromes (MDS), refractory anemia (RA),
891. A method of claim 1, wherein said cancer is Myelodysplastic syndromes (MDS), unclassifiable MDS
892. A method of claim 1, wherein said cancer is Myelodysplastic Syndromes (MDS), with Eosinophilia or Basophilia
893. A method of claim 1, wherein said cancer is Myelodysplastic syndromes (MDS), with extensive fibrosis
894. A method of claim 1, wherein said cancer is Myelodysplastic syndromes (MDS), with Myelofibrosis
895. A method of claim 1, wherein said cancer is Myelodysplastic syndromes (MDS):



896. A method of claim 1, wherein said cancer is Myeloma, Bence-Jones
897. A method of claim 1, wherein said cancer is Myeloproliferative Disorder
898. A method of claim 1, wherein said cancer is Myofibroblastic Tumor
899. A method of claim 1, wherein said cancer is Myosarcoma
900. A method of claim 1, wherein said cancer is Myxoid
901. A method of claim 1, wherein said cancer is Myxoid (Round Cell) Liposarcoma
902. A method of claim 1, wherein said cancer is Myxoid Chondrosarcoma
903. A method of claim 1, wherein said cancer is Nail/Nail Bed Cancer
904. A method of claim 1, wherein said cancer is Nasal Cavity Cancer
905. A method of claim 1, wherein said cancer is Nasopharynx Cancer
906. A method of claim 1, wherein said cancer is Neck, Radical Dissection
907. A method of claim 1, wherein said cancer is Necrolytic migratory erythema
908. A method of claim 1, wherein said cancer is Neoplastic Meningitis
909. A method of claim 1, wherein said cancer is Nerve Sheath Tumors
910. A method of claim 1, wherein said cancer is Neural Tumors
911. A method of claim 1, wherein said cancer is Neuroblastoma (Adult)
912. A method of claim 1, wherein said cancer is Neuroblastoma (Child)
913. A method of claim 1, wherein said cancer is Neuroendocrine Tumors, Carcinoids (Foregut, Hindgut, Midgut)
914. A method of claim 1, wherein said cancer is Neuroendocrine Tumors, Glandular
915. A method of claim 1, wherein said cancer is Neuroendocrine Tumors, Insular
916. A method of claim 1, wherein said cancer is Neuroendocrine Tumors, Mixed
917. A method of claim 1, wherein said cancer is Neuroendocrine Tumors, Trabecular
918. A method of claim 1, wherein said cancer is Neuroendocrine Tumors, Undifferentiated
919. A method of claim 1, wherein said cancer is Neuroendocrine Tumors:
920. A method of claim 1, wherein said cancer is Neurofibromatosis Type I (Von Reckling-Hausen's Disease)
921. A method of claim 1, wherein said cancer is Neurofibrosarcoma
922. A method of claim 1, wherein said cancer is Neurofibrosarcoma
923. A method of claim 1, wherein said cancer is Neurologic Paraneoplastic Syndrome
924. A method of claim 1, wherein said cancer is Neuromuscular Junction Disorders

925. A method of claim 1, wherein said cancer is Nonkeratinizing
926. A method of claim 1, wherein said cancer is Non-melanoma skin cancer
927. A method of claim 1, wherein said cancer is Nose Tumor
928. A method of claim 1, wherein said cancer is Ocular Melanoma
929. A method of claim 1, wherein said cancer is Olfactory Cancer
930. A method of claim 1, wherein said cancer is Oligodendroglioma
931. A method of claim 1, wherein said cancer is Optic Glioma
932. A method of claim 1, wherein said cancer is Oral Cancer
933. A method of claim 1, wherein said cancer is Orbital Lymphoma
934. A method of claim 1, wherein said cancer is Oropharynx Cancer
935. A method of claim 1, wherein said cancer is Osteochondroma
936. A method of claim 1, wherein said cancer is Osteogenic Sarcoma
937. A method of claim 1, wherein said cancer is Osteoid Tumors
938. A method of claim 1, wherein said cancer is Osteomyelitis
939. A method of claim 1, wherein said cancer is Osteosarcoma
940. A method of claim 1, wherein said cancer is Osteosarcoma, Central Medullary
941. A method of claim 1, wherein said cancer is Osteosarcoma, Low-Grade Intraosseous
942. A method of claim 1, wherein said cancer is Osteosarcoma, Paget's Sarcoma
943. A method of claim 1, wherein said cancer is Osteosarcoma, Parosteal
944. A method of claim 1, wherein said cancer is Osteosarcoma, Periosteal
945. A method of claim 1, wherein said cancer is Osteosarcoma, Small Cell
946. A method of claim 1, wherein said cancer is Osteosarcoma:
947. A method of claim 1, wherein said cancer is Ovarian Cancer (Adult)
948. A method of claim 1, wherein said cancer is Ovarian Cancer (Child)
949. A method of claim 1, wherein said cancer is Ovarian Cancer with Bone Metastases
950. A method of claim 1, wherein said cancer is Ovarian Cancer with Liver Metastases
951. A method of claim 1, wherein said cancer is Ovarian Cancer with Lung Metastases
952. A method of claim 1, wherein said cancer is Ovarian Cancer with Meningeal Metastases
953. A method of claim 1, wherein said cancer is Ovarian Cancer with Pleural Effusion
954. A method of claim 1, wherein said cancer is Ovarian Cancer with Spleen Metastases
955. A method of claim 1, wherein said cancer is Ovarian Cancer, Advanced

956. A method of claim 1, wherein said cancer is Ovarian Cancer, Androblastoma, Gynandroblastoma
957. A method of claim 1, wherein said cancer is Ovarian Cancer, Androblastoma, Hilus Cell Tumor
958. A method of claim 1, wherein said cancer is Ovarian Cancer, Androblastoma, Leydig Cell Tumor
959. A method of claim 1, wherein said cancer is Ovarian Cancer, Androblastoma, Sertolid Cell Tumor (Tubular Adenoma of Pick)
960. A method of claim 1, wherein said cancer is Ovarian Cancer, Androblastoma, Sertoli-Leydig Cell Tumor
961. A method of claim 1, wherein said cancer is Ovarian Cancer, Androblastoma, Tubular Androblastoma
962. A method of claim 1, wherein said cancer is Ovarian Cancer, Androblastoma, Unclassified
963. A method of claim 1, wherein said cancer is Ovarian Cancer, Androblastoma:
964. A method of claim 1, wherein said cancer is Ovarian Cancer, Borderline, Endometrioid
965. A method of claim 1, wherein said cancer is Ovarian Cancer, Borderline, Mucinous,
966. A method of claim 1, wherein said cancer is Ovarian Cancer, Borderline, Mucinous, Micropapillary Serous Carcinoma
967. A method of claim 1, wherein said cancer is Ovarian Cancer, Borderline, Mucinous, Pseudomyxoma Peritonei Serous
968. A method of claim 1, wherein said cancer is Ovarian Cancer, Borderline:
969. A method of claim 1, wherein said cancer is Ovarian Cancer, Carcinosarcoma
970. A method of claim 1, wherein said cancer is Ovarian Cancer, Endometrioid Tumor, Brenner Tumor
971. A method of claim 1, wherein said cancer is Ovarian Cancer, Endometrioid Tumor, Carcinoma
972. A method of claim 1, wherein said cancer is Ovarian Cancer, Endometrioid Tumor, Carcinoma, Adenoacanthoma
973. A method of claim 1, wherein said cancer is Ovarian Cancer, Endometrioid Tumor, Carcinoma, Adenocarcinoma

974. A method of claim 1, wherein said cancer is Ovarian Cancer, Endometrioid Tumor, Carcinoma, Cystadenofibroma
975. A method of claim 1, wherein said cancer is Ovarian Cancer, Endometrioid Tumor, Carcinoma, Malignant Adenofibroma,
976. A method of claim 1, wherein said cancer is Ovarian Cancer, Endometrioid Tumor, Carcinoma, Malignant Adenofibroma,
977. A method of claim 1, wherein said cancer is Ovarian Cancer, Endometrioid Tumor, Clear Cell (mesonephroid) Tumor,
978. A method of claim 1, wherein said cancer is Ovarian Cancer, Endometrioid Tumor, Clear Cell (mesonephroid) Tumor, Adenocarcinoma
979. A method of claim 1, wherein said cancer is Ovarian Cancer, Endometrioid Tumor, Clear Cell (mesonephroid) Tumor, Carcinoma
980. A method of claim 1, wherein said cancer is Ovarian Cancer, Endometrioid Tumor, Endometrioid Stromal Sarcoma
981. A method of claim 1, wherein said cancer is Ovarian Cancer, Endometrioid Tumor, Mesodermal (Mullerian) Mixed Tumor,
982. A method of claim 1, wherein said cancer is Ovarian Cancer, Endometrioid Tumor, Mesodermal (Mullerian) Mixed Tumor, Heterologous
983. A method of claim 1, wherein said cancer is Ovarian Cancer, Endometrioid Tumor, Mesodermal (Mullerian) Mixed Tumor, Homologous
984. A method of claim 1, wherein said cancer is Ovarian Cancer, Endometrioid Tumor, Mixed Epithelial Tumor
985. A method of claim 1, wherein said cancer is Ovarian Cancer, Endometrioid Tumor, Unclassified
986. A method of claim 1, wherein said cancer is Ovarian Cancer, Endometrioid Tumor, Undifferentiated Carcinoma
987. A method of claim 1, wherein said cancer is Ovarian Cancer, Endometrioid Tumor:
988. A method of claim 1, wherein said cancer is Ovarian Cancer, Epithelial
989. A method of claim 1, wherein said cancer is Ovarian Cancer, Germ Cell, Dysgerminoma
990. A method of claim 1, wherein said cancer is Ovarian Cancer, Germ Cell, Embryonal Carcinoma

991. A method of claim 1, wherein said cancer is Ovarian Cancer, Germ Cell, Endodermal Sinus Tumor
992. A method of claim 1, wherein said cancer is Ovarian Cancer, Germ Cell, Polyembryoma
993. A method of claim 1, wherein said cancer is Ovarian Cancer, Germ Cell:
994. A method of claim 1, wherein said cancer is Ovarian Cancer, Gonadoblastoma, Mixed
995. A method of claim 1, wherein said cancer is Ovarian Cancer, Gonadoblastoma, Pure
996. A method of claim 1, wherein said cancer is Ovarian Cancer, Gonadoblastoma:
997. A method of claim 1, wherein said cancer is Ovarian Cancer, Granulosa-Stromal Cell Tumor, Fibroma
998. A method of claim 1, wherein said cancer is Ovarian Cancer, Granulosa-Stromal Cell Tumor, Granulosa Cell Tumor
999. A method of claim 1, wherein said cancer is Ovarian Cancer, Granulosa-Stromal Cell Tumor, Thecoma-Fibroma Tumor
1000. A method of claim 1, wherein said cancer is Ovarian Cancer, Granulosa-Stromal Cell Tumor, Unclassified
1001. A method of claim 1, wherein said cancer is Ovarian Cancer, Granulosa-Stromal Cell Tumor:
1002. A method of claim 1, wherein said cancer is Ovarian Cancer, Lipoid Cell Tumor, Choriocarcinoma
1003. A method of claim 1, wherein said cancer is Ovarian Cancer, Lipoid Cell Tumor, Mixed
1004. A method of claim 1, wherein said cancer is Ovarian Cancer, Lipoid Cell Tumor, Teratoma,
1005. A method of claim 1, wherein said cancer is Ovarian Cancer, Lipoid Cell Tumor, Teratoma, Carcinoid
1006. A method of claim 1, wherein said cancer is Ovarian Cancer, Lipoid Cell Tumor, Teratoma, Immature
1007. A method of claim 1, wherein said cancer is Ovarian Cancer, Lipoid Cell Tumor, Teratoma, Mature Dermoid Cyst with Malignant Transformation
1008. A method of claim 1, wherein said cancer is Ovarian Cancer, Lipoid Cell Tumor, Teratoma, Monodermal

1009. A method of claim 1, wherein said cancer is Ovarian Cancer, Lipoid Cell Tumor, Teratoma, Struma Ovarii
1010. A method of claim 1, wherein said cancer is Ovarian Cancer, Lipoid Cell Tumor, Teratoma, Struma Ovarii and Carcinoid
1011. A method of claim 1, wherein said cancer is Ovarian Cancer, Lipoid Cell Tumor:
1012. A method of claim 1, wherein said cancer is Ovarian Cancer, Malignant Mucinous Tumor, Adenocarcinoma
1013. A method of claim 1, wherein said cancer is Ovarian Cancer, Malignant Mucinous Tumor, Adenocarcinoma Cystadenocarcinoma
1014. A method of claim 1, wherein said cancer is Ovarian Cancer, Malignant Mucinous Tumor, Malignant Adenofibroma
1015. A method of claim 1, wherein said cancer is Ovarian Cancer, Malignant Mucinous Tumor, Malignant Adenofibroma Cystadenofibroma
1016. A method of claim 1, wherein said cancer is Ovarian Cancer, Malignant Mucinous Tumor:
1017. A method of claim 1, wherein said cancer is Ovarian Cancer, Malignant Serous Tumor, Adenocarcinoma,
1018. A method of claim 1, wherein said cancer is Ovarian Cancer, Malignant Serous Tumor, Adenocarcinoma, Papillary Adenocarcinoma
1019. A method of claim 1, wherein said cancer is Ovarian Cancer, Malignant Serous Tumor, Adenocarcinoma, Papillary Cystadenocarcinoma
1020. A method of claim 1, wherein said cancer is Ovarian Cancer, Malignant Serous Tumor, Malignant Adenofibroma,
1021. A method of claim 1, wherein said cancer is Ovarian Cancer, Malignant Serous Tumor, Malignant Adenofibroma, Cystadenofibroma
1022. A method of claim 1, wherein said cancer is Ovarian Cancer, Malignant Serous Tumor, Surface Papillary Carcinoma
1023. A method of claim 1, wherein said cancer is Ovarian Cancer, Malignant Serous Tumor:
1024. A method of claim 1, wherein said cancer is Ovarian Cancer, Peritoneal
1025. A method of claim 1, wherein said cancer is Ovarian Cancer, Recurrent
1026. A method of claim 1, wherein said cancer is Ovarian Cancer, Sarcoma

1027. A method of claim 1, wherein said cancer is Ovarian Cancer, Stage I
1028. A method of claim 1, wherein said cancer is Ovarian Cancer, Stage II
1029. A method of claim 1, wherein said cancer is Ovarian Cancer, Stage III
1030. A method of claim 1, wherein said cancer is Ovarian Cancer, Stage IV
1031. A method of claim 1, wherein said cancer is Ovarian Cancer, Stromal Cell
1032. A method of claim 1, wherein said cancer is Pachydermoperiostosis
1033. A method of claim 1, wherein said cancer is Paget's Disease of the Breast
1034. A method of claim 1, wherein said cancer is Paget's disease of the breast Pancreatic Cancer, Islet Cell
1035. A method of claim 1, wherein said cancer is Paget's Lesions
1036. A method of claim 1, wherein said cancer is Palmar
1037. A method of claim 1, wherein said cancer is Pancreatic Cancer - Adenocarcinoma, Adenosquamous
1038. A method of claim 1, wherein said cancer is Pancreatic Cancer - Adenocarcinoma, Anaplastic
1039. A method of claim 1, wherein said cancer is Pancreatic Cancer - Adenocarcinoma, Colloid Ductal (mucinous noncystics)
1040. A method of claim 1, wherein said cancer is Pancreatic Cancer - Adenocarcinoma, Ductal Adenocarcinoma
1041. A method of claim 1, wherein said cancer is Pancreatic Cancer - Adenocarcinoma, Medullary
1042. A method of claim 1, wherein said cancer is Pancreatic Cancer - Adenocarcinoma, Signet-ring Cell
1043. A method of claim 1, wherein said cancer is Pancreatic Cancer - Adenocarcinoma, Undifferentiated carcinoma with osteoclast-like giant cells
1044. A method of claim 1, wherein said cancer is Pancreatic Cancer - Operable
1045. A method of claim 1, wherein said cancer is Pancreatic Cancer - Pancreatic endocrine tumors (PET)
1046. A method of claim 1, wherein said cancer is Pancreatic Cancer - Pancreatoblastoma
1047. A method of claim 1, wherein said cancer is Pancreatic Cancer - PPoma
1048. A method of claim 1, wherein said cancer is Pancreatic Cancer - Stage I

1049. A method of claim 1, wherein said cancer is Pancreatic Cancer - Stage II
1050. A method of claim 1, wherein said cancer is Pancreatic Cancer - Stage III
1051. A method of claim 1, wherein said cancer is Pancreatic Cancer - Stage IVA
1052. A method of claim 1, wherein said cancer is Pancreatic Cancer - Stage IVB
1053. A method of claim 1, wherein said cancer is Pancreatic Cancer - VIPoma
1054. A method of claim 1, wherein said cancer is Pancreatic Cancer- Carcinoid
1055. A method of claim 1, wherein said cancer is Pancreatic Cancer including:
1056. A method of claim 1, wherein said cancer is Pancreatic Cancer with Liver Metastases
1057. A method of claim 1, wherein said cancer is Pancreatic Cancer, Acinar cell carcinoma
1058. A method of claim 1, wherein said cancer is Pancreatic Cancer, Adenocarcinoma:
1059. A method of claim 1, wherein said cancer is Pancreatic Cancer, Borderline Pancreatic Tumors
1060. A method of claim 1, wherein said cancer is Pancreatic Cancer, Cystic Neoplasms, Intraductal Papillary Mucinous Neoplasms
1061. A method of claim 1, wherein said cancer is Pancreatic Cancer, Cystic Neoplasms, Mucinous Cystic Neoplasms
1062. A method of claim 1, wherein said cancer is Pancreatic Cancer, Cystic Neoplasms, Mucinous Cystic Neoplasms Borderline
1063. A method of claim 1, wherein said cancer is Pancreatic Cancer, Cystic Neoplasms, Mucinous Cystic Neoplasms Cystadenocarcinoma
1064. A method of claim 1, wherein said cancer is Pancreatic Cancer, Cystic Neoplasms, Mucinous Cystic Neoplasms Cystadenoma
1065. A method of claim 1, wherein said cancer is Pancreatic Cancer, Cystic Neoplasms, Mucinous Cystic Neoplasms Mucinous Cystic Neoplasm with In Situ Carcinoma
1066. A method of claim 1, wherein said cancer is Pancreatic Cancer, Cystic Neoplasms, Serous Cystic Neoplasms
1067. A method of claim 1, wherein said cancer is Pancreatic Cancer, Cystic Neoplasms:
1068. A method of claim 1, wherein said cancer is Pancreatic Cancer, Inoperable
1069. A method of claim 1, wherein said cancer is Pancreatic Cancer, Islet Cell
1070. A method of claim 1, wherein said cancer is Pancreatic Cancer, Islet cell tumors, gastrinoma



1071. A method of claim 1, wherein said cancer is Pancreatic Cancer, Islet Cell, gastrinoma
1072. A method of claim 1, wherein said cancer is Pancreatic Cancer, Islet Cell, insulinoma
1073. A method of claim 1, wherein said cancer is Pancreatic Cancer, Islet Cell, lucagonoma
1074. A method of claim 1, wherein said cancer is Pancreatic Cancer, Recurrent Pancreatic Cancer
1075. A method of claim 1, wherein said cancer is Papillary
1076. A method of claim 1, wherein said cancer is Papillary Serous Carcinoma of the Peritoneum
1077. A method of claim 1, wherein said cancer is Papillary thyroid cancer without oxyphilia
1078. A method of claim 1, wherein said cancer is Papillary thyroid carcinoma with papillary renal neoplasia (PTC-RCC)
1079. A method of claim 1, wherein said cancer is Paraganglioma
1080. A method of claim 1, wherein said cancer is Paranasal Sinus Cancer
1081. A method of claim 1, wherein said cancer is paraneoplastic encephalomyelitis
1082. A method of claim 1, wherein said cancer is Paraneoplastic Motor Neuron Disorders
1083. A method of claim 1, wherein said cancer is Paraneoplastic neuromyotonia
1084. A method of claim 1, wherein said cancer is Paraneoplastic parkinsonian syndromes
1085. A method of claim 1, wherein said cancer is Paraneoplastic pemphigus
1086. A method of claim 1, wherein said cancer is Paraneoplastic Peripheral Neuropathies
1087. A method of claim 1, wherein said cancer is Paraneoplastic Syndromes
1088. A method of claim 1, wherein said cancer is Paraneoplastic Vision Loss
1089. A method of claim 1, wherein said cancer is Parathyroid carcinoma
1090. A method of claim 1, wherein said cancer is Parathyroid neoplasia
1091. A method of claim 1, wherein said cancer is Parotid Gland Cancer
1092. A method of claim 1, wherein said cancer is Pelvic Tumor
1093. A method of claim 1, wherein said cancer is Penile (Peyronie's Fibromatosis)
1094. A method of claim 1, wherein said cancer is Penis Cancer - Advanced Penile Cancer
1095. A method of claim 1, wherein said cancer is Penis Cancer - Balantitis Xerotica Obliterans
1096. A method of claim 1, wherein said cancer is Penis Cancer - Buschke-Löwenstein Tumor
1097. A method of claim 1, wherein said cancer is Penis Cancer - Carcinoma In Situ
1098. A method of claim 1, wherein said cancer is Penis Cancer - Invasive Penile Cancer

1099. A method of claim 1, wherein said cancer is Penis Cancer - Penile Verrucous Carcinoma
1100. A method of claim 1, wherein said cancer is Penis Cancer:
1101. A method of claim 1, wherein said cancer is Periapillary Cancer
1102. A method of claim 1, wherein said cancer is Pericardial Effusion:
1103. A method of claim 1, wherein said cancer is Pericardial Mesothelioma
1104. A method of claim 1, wherein said cancer is Peripheral Nerve Sheath Tumor
1105. A method of claim 1, wherein said cancer is Peripheral T-Cell Lymphoma
1106. A method of claim 1, wherein said cancer is Peritoneal cancer:
1107. A method of claim 1, wherein said cancer is Peritoneal Carcinomatosis:
1108. A method of claim 1, wherein said cancer is Peutz-Jeghers syndrome
1109. A method of claim 1, wherein said cancer is Pheochromocytoma
1110. A method of claim 1, wherein said cancer is Pinealoma
1111. A method of claim 1, wherein said cancer is Pineoblastoma
1112. A method of claim 1, wherein said cancer is Placental-Site Trophoblastic Tumors
1113. A method of claim 1, wherein said cancer is plasma cell leukemia
1114. A method of claim 1, wherein said cancer is plasma cell myeloma
1115. A method of claim 1, wherein said cancer is Plasma Cell Neoplasms:
1116. A method of claim 1, wherein said cancer is Plasmacytoma
1117. A method of claim 1, wherein said cancer is Pleomorphic Carcinoma
1118. A method of claim 1, wherein said cancer is Pleomorphic Liposarcoma
1119. A method of claim 1, wherein said cancer is Pleomorphic Rhabdomyosarcoma
1120. A method of claim 1, wherein said cancer is Pleura Metastases
1121. A method of claim 1, wherein said cancer is Pleural Effusion, Malignant
1122. A method of claim 1, wherein said cancer is Pleural Mesothelioma, Malignant
1123. A method of claim 1, wherein said cancer is Plexiform Fibrohistiocytic Tumor
1124. A method of claim 1, wherein said cancer is Precursor B-Lymphoblastic Lymphoma
1125. A method of claim 1, wherein said cancer is Preleukemia
1126. A method of claim 1, wherein said cancer is Primary Central Nervous System Lymphoma
1127. A method of claim 1, wherein said cancer is Primary Effusion Lymphoma
1128. A method of claim 1, wherein said cancer is Primary leptomeningeal lymphoma
1129. A method of claim 1, wherein said cancer is Primary Mammary Adenocarcinoma

1130. A method of claim 1, wherein said cancer is Primary Mediastinal (Thymic) Large B-Cell Lymphoma  
Primary spinal cord lymphoma
1131. A method of claim 1, wherein said cancer is Primary peritoneal carcinoma
1132. A method of claim 1, wherein said cancer is Primary Peritoneal Mesothelioma:
1133. A method of claim 1, wherein said cancer is Primary Peritoneal Papillary Serous Adenocarcinoma
1134. A method of claim 1, wherein said cancer is Primary Vaginal Melanomas
1135. A method of claim 1, wherein said cancer is Primitive Neuroectodermal Tumor (PNET) (Adult)
1136. A method of claim 1, wherein said cancer is Primitive Neuroectodermal Tumor (PNET) (Child)
1137. A method of claim 1, wherein said cancer is Prolymphocytic Leukemia
1138. A method of claim 1, wherein said cancer is Promyelocytic Leukemia
1139. A method of claim 1, wherein said cancer is Prophylactic Mastectomy
1140. A method of claim 1, wherein said cancer is Prostate Cancer in the Elderly
1141. A method of claim 1, wherein said cancer is Prostate Cancer with Bone Metastases
1142. A method of claim 1, wherein said cancer is Prostate Cancer, Early-Stage
1143. A method of claim 1, wherein said cancer is Prostate Cancer, Hormone Refractory
1144. A method of claim 1, wherein said cancer is Prostate Cancer, Small Cell
1145. A method of claim 1, wherein said cancer is Prostate Cancer, Stage A (Stage I)
1146. A method of claim 1, wherein said cancer is Prostate Cancer, Stage B (Stage II)
1147. A method of claim 1, wherein said cancer is Prostate Cancer, Stage C (Stage III)
1148. A method of claim 1, wherein said cancer is Prostate Cancer, Stage D (Stage IV)
1149. A method of claim 1, wherein said cancer is Prostate Cancer, Transitional Cell
1150. A method of claim 1, wherein said cancer is Prostate Cancer:
1151. A method of claim 1, wherein said cancer is Prostatic Intraepithelial Neoplasia (PIN)
1152. A method of claim 1, wherein said cancer is Protein-Losing Enteropathy
1153. A method of claim 1, wherein said cancer is Proximal Ductal Epithelium Adenocarcinoma
1154. A method of claim 1, wherein said cancer is PSA
1155. A method of claim 1, wherein said cancer is Pseudomyxoma Peritonei

1156. A method of claim 1, wherein said cancer is Pseudomyxoma Peritonei
1157. A method of claim 1, wherein said cancer is Pulmonary Blastoma
1158. A method of claim 1, wherein said cancer is Rectal Cancer with Brain Metastases
1159. A method of claim 1, wherein said cancer is Rectal Cancer with Liver Metastases
1160. A method of claim 1, wherein said cancer is Rectal Cancer, Stage I
1161. A method of claim 1, wherein said cancer is Rectal Cancer, Stage II
1162. A method of claim 1, wherein said cancer is Rectal Cancer, Stage III
1163. A method of claim 1, wherein said cancer is Recurrent Colon Cancer
1164. A method of claim 1, wherein said cancer is Recurrent Colorectal Cancer
1165. A method of claim 1, wherein said cancer is Recurrent Lung Cancer
1166. A method of claim 1, wherein said cancer is Recurrent Melanoma
1167. A method of claim 1, wherein said cancer is Recurrent Ovarian Cancer
1168. A method of claim 1, wherein said cancer is Recurrent Prostate Cancer
1169. A method of claim 1, wherein said cancer is Recurrent Rectal Cancer
1170. A method of claim 1, wherein said cancer is Relapsed Lymphoma
1171. A method of claim 1, wherein said cancer is Renal Cell Carcinoma
1172. A method of claim 1, wherein said cancer is Renal Cell Carcinoma with Lung Metastases
1173. A method of claim 1, wherein said cancer is Renal Pelvis Cancer
1174. A method of claim 1, wherein said cancer is Reticulum Cell Sarcoma (Lymphoma of bone)
1175. A method of claim 1, wherein said cancer is Retinoblastoma (Adult)
1176. A method of claim 1, wherein said cancer is Retinoblastoma (Child)
1177. A method of claim 1, wherein said cancer is Rhabdomyosarcoma
1178. A method of claim 1, wherein said cancer is Rhabdomyosarcoma
1179. A method of claim 1, wherein said cancer is Rhabdomyosarcoma
1180. A method of claim 1, wherein said cancer is Rhabdomyosarcomas
1181. A method of claim 1, wherein said cancer is Richter's lymphoma
1182. A method of claim 1, wherein said cancer is Richter's Syndrome
1183. A method of claim 1, wherein said cancer is Rising PSA as an Indication of Recurrent Prostate Cancer
1184. A method of claim 1, wherein said cancer is Salivary Gland Cancer including:

1185. A method of claim 1, wherein said cancer is Sarcoma
1186. A method of claim 1, wherein said cancer is Sarcoma of Bone
1187. A method of claim 1, wherein said cancer is sarcomatoid
1188. A method of claim 1, wherein said cancer is Sarcomatoid
1189. A method of claim 1, wherein said cancer is Sarcomatoid Carcinoma
1190. A method of claim 1, wherein said cancer is Schwannoma
1191. A method of claim 1, wherein said cancer is Schwannoma, Malignant
1192. A method of claim 1, wherein said cancer is Scirrhous Patern Tumors
1193. A method of claim 1, wherein said cancer is Sclerosing
1194. A method of claim 1, wherein said cancer is Sclerosing Liposarcoma
1195. A method of claim 1, wherein said cancer is Sebaceous Carcinoma
1196. A method of claim 1, wherein said cancer is Sebaceous Carcinoma
1197. A method of claim 1, wherein said cancer is Serous Surface Carcinoma of the Peritoneum
1198. A method of claim 1, wherein said cancer is Serous Surface Papillary Carcinoma
1199. A method of claim 1, wherein said cancer is Sezary Syndrome
1200. A method of claim 1, wherein said cancer is Simple Leiomyoma
1201. A method of claim 1, wherein said cancer is Sinus Cancer
1202. A method of claim 1, wherein said cancer is Sinus Cancer, Cavernous
1203. A method of claim 1, wherein said cancer is Sinus Cancer, Endodermal
1204. A method of claim 1, wherein said cancer is Sinus Cancer, Esthesioneuroblastoma
1205. A method of claim 1, wherein said cancer is Sinus Cavity Cancer
1206. A method of claim 1, wherein said cancer is Sinus, Cavernous
1207. A method of claim 1, wherein said cancer is Skeletal Muscle Tumors
1208. A method of claim 1, wherein said cancer is Skin Cancer:
1209. A method of claim 1, wherein said cancer is Skin Metastases
1210. A method of claim 1, wherein said cancer is Small Cell Bladder Cancer
1211. A method of claim 1, wherein said cancer is Small Cell Carcinoma
1212. A method of claim 1, wherein said cancer is Small Cell Lung Cancer
1213. A method of claim 1, wherein said cancer is Small Cell Lung Cancer with Brain Metastases

1214. A method of claim 1, wherein said cancer is Small Cell Lung Cancer with Liver Metastases
1215. A method of claim 1, wherein said cancer is Small Cell Lung Cancer, Extensive Stage
1216. A method of claim 1, wherein said cancer is Small Cell Lung Cancer, Limited Stage
1217. A method of claim 1, wherein said cancer is Small Cell Osteosarcoma
1218. A method of claim 1, wherein said cancer is Small Cells
1219. A method of claim 1, wherein said cancer is Small Cleaved Cell Lymphoma
1220. A method of claim 1, wherein said cancer is Small Intestine Cancer, including:
1221. A method of claim 1, wherein said cancer is Small Round Cell Sarcoma
1222. A method of claim 1, wherein said cancer is Smooth Muscle Tumors
1223. A method of claim 1, wherein said cancer is Soft Tissue Lymphoma
1224. A method of claim 1, wherein said cancer is Soft Tissue Sarcoma (Adult)
1225. A method of claim 1, wherein said cancer is Soft Tissue Sarcoma (Child)
1226. A method of claim 1, wherein said cancer is Soft Tissue Sarcoma, Angiosarcoma
1227. A method of claim 1, wherein said cancer is Soft Tissue Sarcoma, Clear Cell
1228. A method of claim 1, wherein said cancer is Soft Tissue Sarcoma, Dermatofibrosarcoma Protuberans
1229. A method of claim 1, wherein said cancer is Soft Tissue Sarcoma, Hemangiopericytoma
1230. A method of claim 1, wherein said cancer is Soft Tissue Sarcoma, Leiomyosarcoma
1231. A method of claim 1, wherein said cancer is Soft Tissue Sarcoma, Liposarcoma
1232. A method of claim 1, wherein said cancer is Soft Tissue Sarcoma, Malignant Fibrous Histiocytoma
1233. A method of claim 1, wherein said cancer is Soft Tissue Sarcoma, Primitive Neuroectodermal (Adult)
1234. A method of claim 1, wherein said cancer is Soft Tissue Sarcoma, Primitive Neuroectodermal (Child)
1235. A method of claim 1, wherein said cancer is Soft Tissue Sarcoma, Rhabdomyosarcoma
1236. A method of claim 1, wherein said cancer is Soft Tissue Sarcoma, Synovial
1237. A method of claim 1, wherein said cancer is Soft Tissue Sarcoma:
1238. A method of claim 1, wherein said cancer is Solitary Fibrous Tumor
1239. A method of claim 1, wherein said cancer is Solitary Fibrous Tumor

1240. A method of claim 1, wherein said cancer is Solitary Plasmacytoma
1241. A method of claim 1, wherein said cancer is Spinal Cord Cancer
1242. A method of claim 1, wherein said cancer is Spindle Cell Carcinoma
1243. A method of claim 1, wherein said cancer is Spindle Cell Hemangioendothelioma
1244. A method of claim 1, wherein said cancer is Spindle Cell Rhabdomyosarcoma
1245. A method of claim 1, wherein said cancer is Spindle Cell Thyroid Cancer
1246. A method of claim 1, wherein said cancer is Spindle Sarcomatoid Cells
1247. A method of claim 1, wherein said cancer is Splenic Marginal Zone Lymphoma with or without Villous Lymphocytes
1248. A method of claim 1, wherein said cancer is Squamous Cell
1249. A method of claim 1, wherein said cancer is Squamous Cell Cancer (Non-Skin)
1250. A method of claim 1, wherein said cancer is Squamous Cell Carcinoma
1251. A method of claim 1, wherein said cancer is Squamous Cell Carcinoma
1252. A method of claim 1, wherein said cancer is Squamous Cell Carcinoma
1253. A method of claim 1, wherein said cancer is Squamous Cell Carcinoma
1254. A method of claim 1, wherein said cancer is Squamous Cell Carcinoma - Large Cell Nonkeratinizing
1255. A method of claim 1, wherein said cancer is Squamous Cell Carcinoma - Large Cell Keratinizing
1256. A method of claim 1, wherein said cancer is Squamous Cell Carcinoma - Papillary
1257. A method of claim 1, wherein said cancer is Squamous Cell Carcinoma - Sarcomatoid Squamous Carcinoma
1258. A method of claim 1, wherein said cancer is Squamous Cell Carcinoma - Small Cell Carcinoma
1259. A method of claim 1, wherein said cancer is Squamous Cell Carcinoma - Verrucous Carcinoma
1260. A method of claim 1, wherein said cancer is Squamous Cell Carcinoma:
1261. A method of claim 1, wherein said cancer is Squamous Cell Carcinomas - Basaloid
1262. A method of claim 1, wherein said cancer is Squamous Cell Carcinomas - Clear Cell
1263. A method of claim 1, wherein said cancer is Squamous Cell Carcinomas - Papillary
1264. A method of claim 1, wherein said cancer is Squamous Cell Carcinomas - Small Cell

- 1265. A method of claim 1, wherein said cancer is Squamous Cell Carcinomas:
- 1266. A method of claim 1, wherein said cancer is Squamous Cell- keratoacanthoma, periungual
- 1267. A method of claim 1, wherein said cancer is Squamous Cell Lung Cancer
- 1268. A method of claim 1, wherein said cancer is Squamous Cell Skin Cancer
- 1269. A method of claim 1, wherein said cancer is Squamous Hyperplasia
- 1270. A method of claim 1, wherein said cancer is Stem Cell Transplantation
- 1271. A method of claim 1, wherein said cancer is Stomach Cancer with Bone Metastases
- 1272. A method of claim 1, wherein said cancer is Stomach Cancer, Adenocanthoma
- 1273. A method of claim 1, wherein said cancer is Stomach Cancer, Adenocarcinoma
- 1274. A method of claim 1, wherein said cancer is Stomach Cancer, Adenosquamous Carcinoma
- 1275. A method of claim 1, wherein said cancer is Stomach Cancer, Gastric Carcinoid
- 1276. A method of claim 1, wherein said cancer is Stomach Cancer, Gastric Leiomyosarcoma
- 1277. A method of claim 1, wherein said cancer is Stomach Cancer, Gastric Lymphoma
- 1278. A method of claim 1, wherein said cancer is Stomach Cancer, Gastric Plasmacytoma
- 1279. A method of claim 1, wherein said cancer is Stomach Cancer, including:
- 1280. A method of claim 1, wherein said cancer is Stomach Cancer, Linitis Plastica
- 1281. A method of claim 1, wherein said cancer is Stomach Cancer, Mixed adeno- and Choriocarcinoma
- 1282. A method of claim 1, wherein said cancer is Stomach Cancer, Mucinous Adenocarcinoma
- 1283. A method of claim 1, wherein said cancer is Stomach Cancer, Papillary Adenocarcinoma
- 1284. A method of claim 1, wherein said cancer is Stomach Cancer, Scirrhus Carcinoma
- 1285. A method of claim 1, wherein said cancer is Stomach Cancer, Signet Ring Cell
- 1286. A method of claim 1, wherein said cancer is Stomach Cancer, Squamous Cell Carcinoma
- 1287. A method of claim 1, wherein said cancer is Storiform-Pleomorphic
- 1288. A method of claim 1, wherein said cancer is Subacute Sensory Neuronopathy and Encephalomyeloneuritis
- 1289. A method of claim 1, wherein said cancer is Subcutaneous Panniculitis-Like T-Cell Lymphoma



1290. A method of claim 1, wherein said cancer is Superficial Bladder Cancer
1291. A method of claim 1, wherein said cancer is Superficial Fibromatoses
1292. A method of claim 1, wherein said cancer is Sweat Glands Cancer
1293. A method of claim 1, wherein said cancer is Sweet's syndrome
1294. A method of claim 1, wherein said cancer is Syndrome of Inappropriate Antidiuretic Hormone Production
1295. A method of claim 1, wherein said cancer is Synovial Sarcoma
1296. A method of claim 1, wherein said cancer is Synovial Sarcoma
1297. A method of claim 1, wherein said cancer is T-Cell Leukemia
1298. A method of claim 1, wherein said cancer is T-Cell Lymphoma, Cutaneous
1299. A method of claim 1, wherein said cancer is T-Cell Lymphomas of the Small Intestine
1300. A method of claim 1, wherein said cancer is T-Cell-Rich/Histiocyte-Rich Large B-Cell Lymphoma
1301. A method of claim 1, wherein said cancer is Teratoma
1302. A method of claim 1, wherein said cancer is Testicular Cancer, Adenocarcinoma of the Rete Testis
1303. A method of claim 1, wherein said cancer is Testicular Cancer, Carcinoma In Situ
1304. A method of claim 1, wherein said cancer is Testicular Cancer, Choriocarcinoma
1305. A method of claim 1, wherein said cancer is Testicular Cancer, Epidermoid Cyst
1306. A method of claim 1, wherein said cancer is Testicular Cancer, Germ Cell
1307. A method of claim 1, wherein said cancer is Testicular Cancer, Gonadoblastoma
1308. A method of claim 1, wherein said cancer is Testicular Cancer, Granulosa Cell Tumors
1309. A method of claim 1, wherein said cancer is Testicular Cancer, Leydig Cell Tumors
1310. A method of claim 1, wherein said cancer is Testicular Cancer, Lymphoma
1311. A method of claim 1, wherein said cancer is Testicular Cancer, Mesothelioma
1312. A method of claim 1, wherein said cancer is Testicular Cancer, Metastatic Carcinoma
1313. A method of claim 1, wherein said cancer is Testicular Cancer, Non-Seminoma:
1314. A method of claim 1, wherein said cancer is Testicular Cancer, Sarcomas
1315. A method of claim 1, wherein said cancer is Testicular Cancer, Seminoma:
1316. A method of claim 1, wherein said cancer is Testicular Cancer, Sertoli Cell Tumors:
1317. A method of claim 1, wherein said cancer is Testicular Cancer, Stage I

1318. A method of claim 1, wherein said cancer is Testicular Cancer, Stage II
1319. A method of claim 1, wherein said cancer is Testicular Cancer, Stage III
1320. A method of claim 1, wherein said cancer is Thalamus (Thalamic) Brain Tumor
1321. A method of claim 1, wherein said cancer is Thymic Carcinoid
1322. A method of claim 1, wherein said cancer is Thymic Carcinoma
1323. A method of claim 1, wherein said cancer is Thymolipoma
1324. A method of claim 1, wherein said cancer is Thymoma
1325. A method of claim 1, wherein said cancer is Thymus Cancer, including:
1326. A method of claim 1, wherein said cancer is Thyroid Cancer:
1327. A method of claim 1, wherein said cancer is Thyroid Lymphoma
1328. A method of claim 1, wherein said cancer is Thyroid malignancy derived from follicular or parafollicular C cells
1329. A method of claim 1, wherein said cancer is Tongue Base Cancer
1330. A method of claim 1, wherein said cancer is Tongue Cancer
1331. A method of claim 1, wherein said cancer is Transition Cell Cancer of the Urethra
1332. A method of claim 1, wherein said cancer is Transitional Cell
1333. A method of claim 1, wherein said cancer is Transitional Cell Cancer of Renal Pelvis
1334. A method of claim 1, wherein said cancer is Transitional Cell Cancer of the Ureter
1335. A method of claim 1, wherein said cancer is Transitional Cell Carcinoma
1336. A method of claim 1, wherein said cancer is Transitional Cell Cancer of Bladder
1337. A method of claim 1, wherein said cancer is Transitional Cell Tumors
1338. A method of claim 1, wherein said cancer is True Leiomyoma
1339. A method of claim 1, wherein said cancer is Tuberous Sclerosis (Bourneville Disease)
1340. A method of claim 1, wherein said cancer is Tylosis
1341. A method of claim 1, wherein said cancer is Typical
1342. A method of claim 1, wherein said cancer is Unknown Primary Cancer
1343. A method of claim 1, wherein said cancer is Ureter Cancer
1344. A method of claim 1, wherein said cancer is Urethra Cancer, Carcinoma of Bulbomembranous Urethra
1345. A method of claim 1, wherein said cancer is Urethra Cancer, Carcinoma of Distal Urethra

1346. A method of claim 1, wherein said cancer is Urethra Cancer, Carcinoma of Prostatic Urethra
1347. A method of claim 1, wherein said cancer is Urethra Cancer, Carcinoma of Proximal Urethra
1348. A method of claim 1, wherein said cancer is Urethra Cancer:
1349. A method of claim 1, wherein said cancer is Uterine Cancer
1350. A method of claim 1, wherein said cancer is Uterine Cancer, Carcinosarcoma
1351. A method of claim 1, wherein said cancer is Uterine Cancer, Endometrial
1352. A method of claim 1, wherein said cancer is Uterine Cancer, Leiomyosarcoma
1353. A method of claim 1, wherein said cancer is Uterine Cancer, Papillary Serous
1354. A method of claim 1, wherein said cancer is Uterine Cancer, Sarcoma
1355. A method of claim 1, wherein said cancer is Uterine Cancer, Stage I
1356. A method of claim 1, wherein said cancer is Uterine Cancer, Stage II
1357. A method of claim 1, wherein said cancer is Uterine Cancer, Stage III
1358. A method of claim 1, wherein said cancer is Uterine Cancer, Stage IV
1359. A method of claim 1, wherein said cancer is Uterine Sarcoma
1360. A method of claim 1, wherein said cancer is Vagina Cancer:
1361. A method of claim 1, wherein said cancer is Vaginal Intraepithelial Neoplasia
1362. A method of claim 1, wherein said cancer is Verrucous carcinoma
1363. A method of claim 1, wherein said cancer is Verrucous Carcinoma
1364. A method of claim 1, wherein said cancer is Verrucous Carcinoma
1365. A method of claim 1, wherein said cancer is Vocal Cord Cancer
1366. A method of claim 1, wherein said cancer is Vulva Cancer:
1367. A method of claim 1, wherein said cancer is Vulvar Intraepithelial Neoplasia
1368. A method of claim 1, wherein said cancer is Vulvar Sarcoma
1369. A method of claim 1, wherein said cancer is Waldenstrom's Macroglobulinemia
1370. A method of claim 1, wherein said cancer is Waldenström's macroglobulinemia (WM)
1371. A method of claim 1, wherein said cancer is Warthin's Tumor
1372. A method of claim 1, wherein said cancer is Well-differentiated Liposarcoma
1373. A method of claim 1, wherein said cancer is Wilms' Tumor (Child)
1374. A method of claim 1, wherein said cancer is With Malignant Differentiation

- 1375. A method of claim 1, wherein said cancer is Yolk Sac
- 1376. A method of claim 1, wherein said cancer is Zollinger-Ellison Syndrome